

PLANNED TREE MAINTENANCE

Tree Works Notification		Created By:	
Public Scrutiny		Date:	
Tree Works reference number and schedule title			
Wards included within planned works:			
Abbey		East Chesterton	
Arbury		Kings Hedges	
Castle		Market	
Cherry Hinton		Newnham	
Coleridge		Petersfield	
Within following Council service areas:			
Highways		Housing	
		Parks	
Size of schedule – based on number of trees included within:			
Small (< 10 trees)		Medium (11 - 50 trees)	
		Large (> 50 trees)	
Brief description of the works			

Tree Works Notification

For tree works submitted under a 'Tree Works Notification' I refer you to Policy GM3 of the Cambridge City Council Citywide Tree Strategy 2016-2026 Part 2:

"All planned tree works will be published on the Council website and through site notices for the community to access at least 20 working days before implementation. The council sees this as an important tool for communicating to the local community about tree work planned for their area and the reasons why the works are necessary." <https://www.cambridge.gov.uk/tree-strategy>

The notification period will run for 20 days from the date of publication of the schedule.

The majority of the works contained within these schedules consists of minor pruning to address health and safety issues, or more significant works to remove trees that are obviously dead, dying or diseased, or replacement planting for trees that have been removed.

A brief outline of the planned works can be found in the table shown above however; full details of the planned works can be found within the attached schedules and maps.

Please note: where trees are due to be felled, these are marked on site with green tape.

Public Scrutiny

For tree works submitted for 'Public Scrutiny' A brief outline of the planned works which we wish to be publicly scrutinised can be found within the attached schedules and maps which will be available for ten working days following the date of publication.

The planned works could involve either removing healthy trees over 75mm in diameter as measured at 1.5m above ground level and/or any tree work or batch of works that will have a significant impact on the landscape character of an area as assessed by an arboricultural officer. This will include crown reductions of over 30% in branch length on trees that have not previously been reduced.

The table above provides details of the works which are open for public scrutiny, please note that some tree works schedules may contain other works in other service areas than those open to this level of scrutiny. The following details only relate to the significant works considered for scrutiny. Please note: where trees are

due to be felled, these are clearly marked on site with green tape.

I refer you to Policy GM5 of the Cambridge City Council [Citywide Tree Strategy 2016-2026 Part 2](#):

“When considering tree works on City Council land, the Council will invite resident and stakeholder comment regarding the following kinds of work:

- a) Any tree work which will have a significant impact on the character of an area.*
- b) Felling healthy trees of over 75mm diameter”*

If you wish to make a comment about any of the works proposed, please submit them via this link: [Comment on a tree work schedule](#). All unresolved objections to tree work subject to public scrutiny will be determined by the relevant Executive Councillor.

Item Ref: 02462

Location:

Abbey Ward Play areas

Site type:

Order no/ref:

Contract/Client Ref:

Item created: 05 September 2025

Priority of works:

Start on/after:

Complete by:

Tree/Item code	Species/Work required	Rate	Quantity	Cost
----------------	-----------------------	------	----------	------

Ditton Fields Play Area (DITFPA), Abbey

Sgl/15 (012076)	Maple (Field) (Acer campestre) (///seat.garage.half)			
RFR	Rem - tree for replant dead tree		1 tree	0.00

Dudley Road Play Area (DUDLET), Abbey

Sgl/1 (514200)	Prunus (Wild Cherry Cv.) (Prunus avium 'Plena') (///broom.cable.jumped)			
CL3	Crown lift to 3m		1 tree	

Sgl/2 (514208)	Prunus (Wild Cherry Cv.) (Prunus avium 'Plena') (///royal.wire.stray)			
CL3	Crown lift to 3m		1 tree	

Sgl/3 (514204)	Prunus (Wild Cherry Cv.) (Prunus avium 'Plena') (///steps.entertainer.bolt)			
CL3	Crown lift to 3m		1 tree	

Sgl/4 (514236)	Hornbeam (Fastigate) (Carpinus betulus 'Fastigiata') (///rich.grow.ally)			
CL3	Crown lift to 3m		1 tree	

Sgl/5 (514240)	Hornbeam (Fastigate) (Carpinus betulus 'Fastigiata') (///patrol.prices.palace)			
CL3	Crown lift to 3m		1 tree	

Sgl/6 (514244)	Hornbeam (Fastigate) (Carpinus betulus 'Fastigiata') (///final.itself.sing)			
CL3	Crown lift to 3m		1 tree	

Sgl/7 (514248)	Hornbeam (Fastigate) (Carpinus betulus 'Fastigiata') (///pages.nights.events)			
CL3	Crown lift to 3m		1 tree	

Sgl/8 (514256)	Hornbeam (Fastigate) (Carpinus betulus 'Fastigiata') (///swim.posed.elite)			
CL3	Crown lift to 3m		1 tree	

Sgl/9 (514260)	Hornbeam (Fastigate) (Carpinus betulus 'Fastigiata') (///happy.float.eaten)			
CL3	Crown lift to 3m		1 tree	

Tree/Item code	Species/Work required	Rate	Quantity	Cost
Sgl/11 (514268)	Hornbeam (Fastigate) (Carpinus betulus 'Fastigiata') (///likely.poems.yappy)			
CL3	Crown lift to 3m		1 tree	
Sgl/12 (514272)	Hornbeam (Fastigate) (Carpinus betulus 'Fastigiata') (///lovely.finishing.fancy)			
CL3	Crown lift to 3m		1 tree	
Sgl/13 (514276)	Hornbeam (Fastigate) (Carpinus betulus 'Fastigiata') (///bars.empty.trail)			
CL2.5	Crown lift to 2.5m		1 tree	
Sgl/14 (514280)	Hornbeam (Fastigate) (Carpinus betulus 'Fastigiata') (///value.chain.certified)			
CL3	Crown lift to 3m		1 tree	
Sgl/15 (514284)	Hornbeam (Fastigate) (Carpinus betulus 'Fastigiata') (///folds.august.error)			
CL3	Crown lift to 3m		1 tree	
Sgl/16 (514216)	Prunus (Wild Cherry Cv.) (Prunus avium 'Plena') (///stamp.gather.taxi)			
CL3	Crown lift to 3m		1 tree	
Sgl/17 (514212)	Prunus (Wild Cherry Cv.) (Prunus avium 'Plena') (///liked.comical.year)			
CL3	Crown lift to 3m		1 tree	
Sgl/18 (514232)	Prunus (Wild Cherry Cv.) (Prunus avium 'Plena') (///audit.league.eggs)			
CL3	Crown lift to 3m		1 tree	
Sgl/19 (514220)	Prunus (Wild Cherry Cv.) (Prunus avium 'Plena') (///feeds.jars.voice)			
CL3	Crown lift to 3m		1 tree	
Sgl/20 (514224)	Prunus (Wild Cherry Cv.) (Prunus avium 'Plena') (///goal.played.dose)			
CL3	Crown lift to 3m		1 tree	
Sgl/21 (514228)	Prunus (Wild Cherry Cv.) (Prunus avium 'Plena') (///cards.medium.method)			
CL3	Crown lift to 3m		1 tree	
Sgl/22 (514428)	Tulip Tree (Common) (Liriodendron tulipifera) (///pushy.stream.homes)			
RD7	Reduce stake by 70%		1 tree	0.00
RPT	Replace stake		1 tree	
RVP	Retie tree tie to prevent rubbing		1 tree	0.00
Sgl/23 (514432)	Maple (Field Cv.) (Acer campestre 'Louisa Red Shine') (///silver.flows.bolt)			
PIT	cut 1m radius tree circle/pit, lift and remove vegetation, lightly fork over and apply thick woodchip mulch to a depth of 5 - 7cm across entire tree pit		1 tree	
RD7	Reduce stake by 70%		1 tree	0.00
RPT	Replace stake		1 tree	
RVP	Retie tree tie to prevent rubbing		1 tree	0.00

Tree/Item code	Species/Work required	Rate	Quantity	Cost
Sgl/24 (514436)	Tulip Tree (Common) (<i>Liriodendron tulipifera</i>) (///spin.expose.composers)			
PIT	cut 1m radius tree circle/pit, lift and remove vegetation, lightly fork over and apply thick woodchip mulch to a depth of 5 - 7cm across entire tree pit		1 tree	
RD7	Reduce stake by 70%		1 tree	0.00
RPT	Replace stake		1 tree	
RVP	Retie tree tie to prevent rubbing		1 tree	0.00
Sgl/25 (514288)	Plane (London) (<i>Platanus x hispanica</i>) (///unless.month.adults)			
CL4	Crown lift to 4m		1 tree	
Sgl/29 (514300)	Oak (Turkey) (<i>Quercus cerris</i>) (///loft.bunny.agrees)			
CLH	C/L - over highway to 3.5-4.5m		1 tree	0.00
Sgl/30 (514304)	Oak (Turkey) (<i>Quercus cerris</i>) (///pouch.client.trees)			
CLH	C/L - over highway to 3.5-4.5m		1 tree	0.00
Sgl/33 (514308)	Lime (Caucasian) (<i>Tilia x euchlora</i>) (///human.singer.simply)			
CL3	Crown lift to 3m		1 tree	
Sgl/44 (514384)	Prunus (Wild Cherry Cv.) (<i>Prunus avium</i> 'Plena') (///loses.penny.likes)			
CLH	C/L - over highway to 3.5-4.5m		1 tree	0.00
CRL	C/R - to clear lamp by 0.5-1m		1 tree	0.00
Sgl/59 (514328)	Prunus (Wild Cherry Cv.) (<i>Prunus avium</i> 'Plena') (///accent.bars.impact)			
RFR	Rem - tree for replant marked with red dot		1 tree	0.00
Sgl/60 (514332)	Prunus (Wild Cherry Cv.) (<i>Prunus avium</i> 'Plena') (///venue.lush.vanish)			
CLH	C/L - over highway to 3.5-4.5m		1 tree	0.00
Sgl/61 (514368)	Prunus (Wild Cherry Cv.) (<i>Prunus avium</i> 'Plena') (///exchanges.bonds.admiral)			
CLH	C/L - over highway to 3.5-4.5m		1 tree	0.00
Thorpe Way Play Area (THORPY), Abbey				
Grp/1 (535052)	Various species (Various species) R/O 120 Thorpe way (///chill.drama.kiosk)			
COP	Coppice (x 10 tree) coppice 1m strip along the building side of 120 Thorpe Way. this is to remove trees that are against the wall of the property.		10 trees	0.00
CL3	Crown lift to 3m all low overhanging branches onto open space		60 trees	
Sgl/2 (535002)	Prunus (Wild Cherry) (<i>Prunus avium</i>) (///piper.boost.candidate)			
RLB	Rem - lower branch		1 tree	0.00

Tree/Item code	Species/Work required	Rate	Quantity	Cost
Grp/2 (535076)	Maple (Field) (Acer campestre) (///twinkling.proved.grew)			
CL3	Crown lift to 3m		30 trees	
CRC	C/R - to clear prune to clear Malus from climbing rocks by 2-3m		30 trees	0.00
Sgl/3 (535084)	Lime (Small Leaved) (Tilia cordata) (///overlooks.country.lobbed)			
CL3	Crown lift to 3m		1 tree	
Grp/3 (535088)	Maple (Field) (Acer campestre) (///dinosaur.doses.universe)			
CL3	Crown lift to 3m (x 0 tree) crown lift 3-4m over edges of paths and play equipment		40 trees	
Sgl/4 (535080)	Lime (Small Leaved) (Tilia cordata) (///mainframe.picnic.hoofs)			
CL3	Crown lift to 3m		1 tree	
Grp/4 (535092)	Maple (Field) (Acer campestre) (///rescue.cooked.senders)			
CL3	Crown lift to 3m (x 40 tree)		40 trees	
Sgl/6 (535072)	Prunus (Wild Cherry) (Prunus avium) (///strutted.kickers.open)			
CL3	Crown lift to 3m		1 tree	
Sgl/7 (535008)	Prunus (Wild Cherry) (Prunus avium) (///trucks.stops.agreeable)			
CL3	Crown lift to 3m		1 tree	
Sgl/8 (535004)	Prunus (Unspecified) (Prunus species) (///ritual.trespass.topping)			
CL2.5	Crown lift to 2.5m		1 tree	
CLH	C/L - over highway to 3.5-4.5m		1 tree	0.00
Sgl/9 (535006)	Prunus (Wild Cherry) (Prunus avium) (///settled.visitors.hardening)			
CL2.5	Crown lift to 2.5m		1 tree	
CLH	C/L - over highway to 3.5-4.5m		1 tree	0.00
Sgl/10 (535007)	Prunus (Wild Cherry) (Prunus avium) (///clinking.deranged.graver)			
CL2.5	Crown lift to 2.5m		1 tree	
CLH	C/L - over highway to 3.5-4.5m		1 tree	0.00
RPC1	Remove epicormics up to 1m agl		1 tree	
Sgl/11 (535772)	Apple (Crab) (Malus sylvestris) (///tone.trickling.tickets)			
CL2.5	Crown lift to 2.5m		1 tree	
Sgl/14 (535768)	Thorn (Hawthorn) (Crataegus monogyna) (///rescue.cooked.senders)			
CL3	Crown lift to 3m		1 tree	
Sgl/19 (535024)	Prunus (Unspecified) (Prunus species) (///evoked.polishing.munched)			
CL3	Crown lift to 3m		1 tree	

Tree/Item code	Species/Work required	Rate	Quantity	Cost
Sgl/21 (535048) CL3 Crown lift to 3m	Ash (Unspecified) (Fraxinus species) (///users.frown.gathering)		1 tree	
Sgl/24 (535032) CRL C/R - to clear lamp by 0.5-1m	Prunus (Wild Cherry) (Prunus avium) (///these.lifestyle.operation)		1 tree	0.00
Sgl/30 (840008) PIT cut 1m radius tree circle/pit, lift and remove vegetation, lightly fork over and apply thick woodchip mulch to a depth of 5 - 7cm across entire tree pit RPT Replace stake RVP Retie tree tie to prevent rubbing	Zelkova (Caucasian Elm) (Zelkova carpinifolia) (///awakening.asset.pretty)		1 tree 1 tree 1 tree	0.00
Sgl/32 (535124) CL3 Crown lift to 3m	Willow (Goat) (Salix caprea) (///bits.wimp.sisters)		1 tree	
Sgl/33 (840012) PIT cut 1m radius tree circle/pit, lift and remove vegetation, lightly fork over and apply thick woodchip mulch to a depth of 5 - 7cm across entire tree pit RPT Replace stake RVP Retie tree tie to prevent rubbing	Zelkova (Caucasian Elm) (Zelkova carpinifolia) (///writers.pass.zinc)		1 tree 1 tree 1 tree	0.00
Sgl/41 (535792) CL3 Crown lift to 3m	Maple (Norway) (Acer platanoides) (///intervals.stardom.relatives)		1 tree	
Sgl/44 (535192) RSK REM - stake	Pine (Corsican) (Pinus nigra var. maritima) (///dupe.variances.foods)		1 tree	0.00
Sgl/45 (535196) COC C/O remove the climber throughout the crown. RSK REM - stake	Pine (Corsican) (Pinus nigra var. maritima) (///bikers.catchers.adjust)		1 tree 1 tree	0.00 0.00
Sgl/46 (535132) SSIVY Sever and strip ivy up to 1 metre above ground level please sever the climber growing into the crown of the tree	Alder (Common) (Alnus glutinosa) (///blogging.list.describes)		1 tree	
Sgl/47 (535136) CL3 Crown lift to 3m SSIVY Sever and strip ivy up to 1 metre above ground level please sever the climber growing into the crown of the tree	Alder (Common) (Alnus glutinosa) (///drive.playfully.polite)		1 tree 1 tree	
Sgl/48 (535796) CLH C/L - over highway to 3.5-4.5m	Willow (White) (Salix alba) (///picked.badly.reception)		1 tree	0.00
Sgl/49 (535020) CLH C/L - over highway to 3.5-4.5m	Willow (White) (Salix alba) (///kiosk.acrobat.valid)		1 tree	0.00

Tree/Item code	Species/Work required	Rate	Quantity	Cost
			1 tree	
Sgl/56 (535060)	Prunus (Wild Cherry) (Prunus avium) R/O 120 Thorpe way (///engine.glimmers.splendid)			
CRG	C/R - gardenside by 2-3m		1 tree	0.00
Sgl/58 (535064)	Lime (Large Leaf) (Tilia platyphyllos) R/O 120 Thorpe way (///dusters.compiler.contrived)			
CL3	Crown lift to 3m garden side only		1 tree	
Sgl/59 (535068)	Maple (Field) (Acer campestre) R/O 120 Thorpe way (///reception.recall.zoomed)			
CRG	C/R - gardenside by pruning back near the crossing or abrasion point with other primary branch		1 tree	0.00
Sgl/60 (535012)	Lime (Unspecified) (Tilia species) (///workouts.skate.fever)			
CL3	Crown lift to 3m		1 tree	
Sgl/61 (840004)	Prunus (Plum) (Prunus domestica) (///shed.trifling.deduced)			
CL3	Crown lift to 3m over play equipment		1 tree	
CRT	C/R - by reduce overhang of play area by 2-3m		1 tree	0.00
Velos Walk Play Area (VELOSX), Abbey				
Sgl/1 (535800)	Maple (Norway) (Acer platanoides) (///craziest.cafe.digesting)			
CL3	Crown lift to 3m		1 tree	
Sgl/2 (535820)	Prunus (Japanese Cherry Cv.) (Prunus serrulata 'Sunset Boulevard') (///confining.heap.monkeys)			
RPC	Rem - epicormics		1 tree	0.00
Sgl/3 (535828)	Pride of India (Common) (Koelreuteria paniculata) (///flicked.renovated.streetcar)			
TGT	tree gator		1 tree	0.00
Sgl/4 (535824)	Pride of India (Common) (Koelreuteria paniculata) (///backpacks.asking.darkest)			
TGT	tree gator		1 tree	0.00
Sgl/6 (535808)	Prunus (Flowering Cherry) (Prunus 'Tai Haku') (///speech.prepped.verge)			
CL2.5	Crown lift to 2.5m		1 tree	
RPC	Rem - epicormics		1 tree	0.00

Tree/Item code	Species/Work required	Rate	Quantity	Cost
Sgl/7 (535804)	Prunus (Flowering Cherry) (Prunus 'Tai Haku') (///mondays.halt.fights)			
CL2.5	Crown lift to 2.5m		1 tree	
RPC	Rem - epicormics		1 tree	0.00
Sgl/8 (535832)	Pride of India (Common) (Koelreuteria paniculata) (///yummy.cosmetic.microchip)			
CL2.5	Crown lift to 2.5m		1 tree	

Expenditure code analysis :-

Expenditure code not specified

Schedule item analysis :-

CLH	C/L - over highway to 3.5-4.5m	10 trees @ 0.00
COC	C/O	1 tree @ 0.00
COP	Coppice	10 trees @ 0.00
CRC	C/R - to clear	30 trees @ 0.00
CRG	C/R - gardenside by	2 trees @ 0.00
CRL	C/R - to clear lamp by 0.5-1m	2 trees @ 0.00
CRT	C/R - by	1 tree @ 0.00
RD7	Reduce stake by 70%	3 trees @ 0.00
RFR	Rem - tree for replant	2 trees @ 0.00
RLB	Rem - lower branch	1 tree @ 0.00
RPC	Rem - epicormics	3 trees @ 0.00
RSK	REM - stake	2 trees @ 0.00
RVP	Retie tree tie to prevent rubbing	5 trees @ 0.00
TGT	tree gator	2 trees @ 0.00

Contractor:

Total cost: 0.00

Issued by:

Kenny McGegeor

ARBORICULTURAL WORKS ORDER

Item Ref: 02462

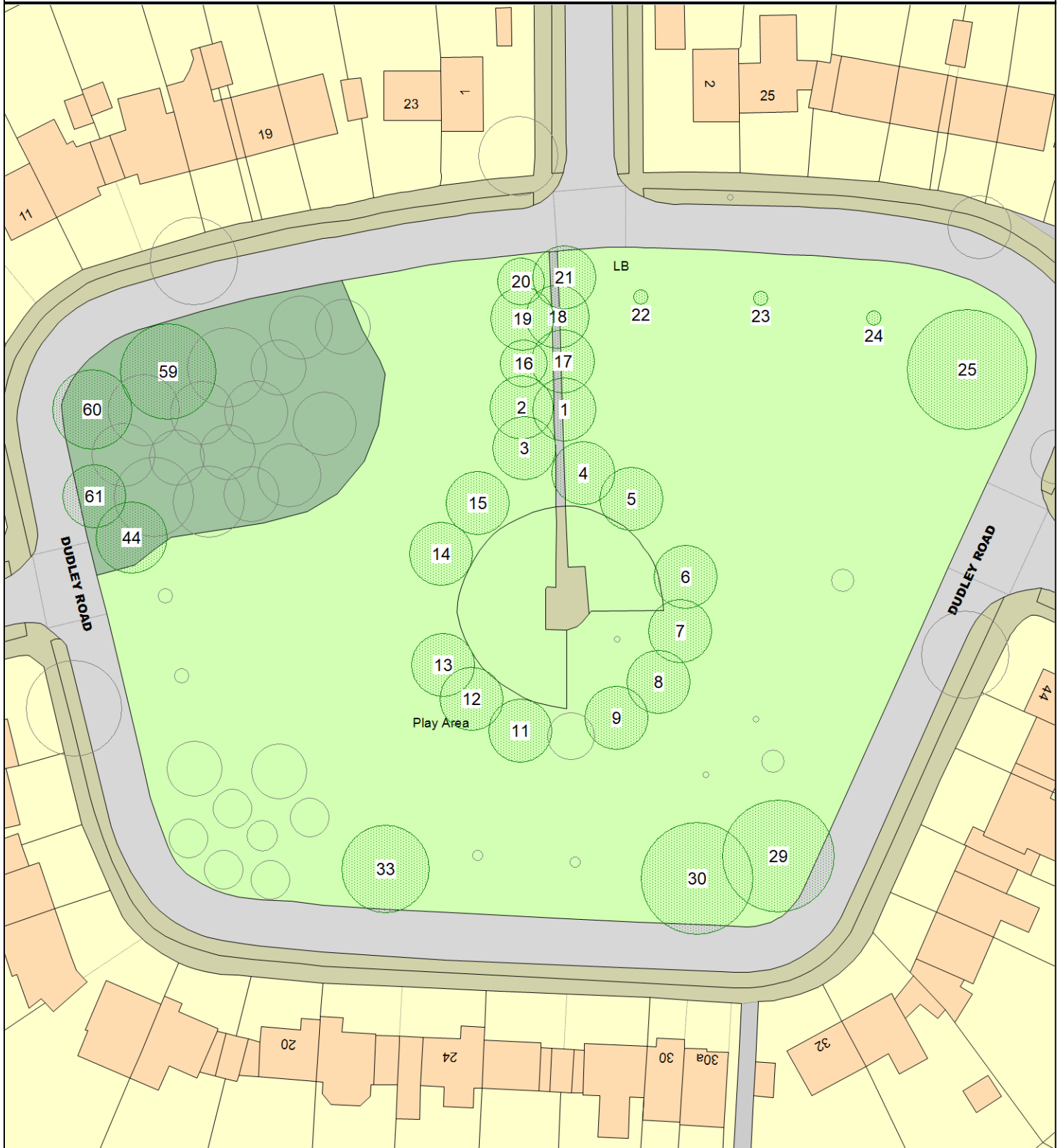
Ditton Fields Play Area (DITFPA), Abbey



ARBORICULTURAL WORKS ORDER

Item Ref: 02462

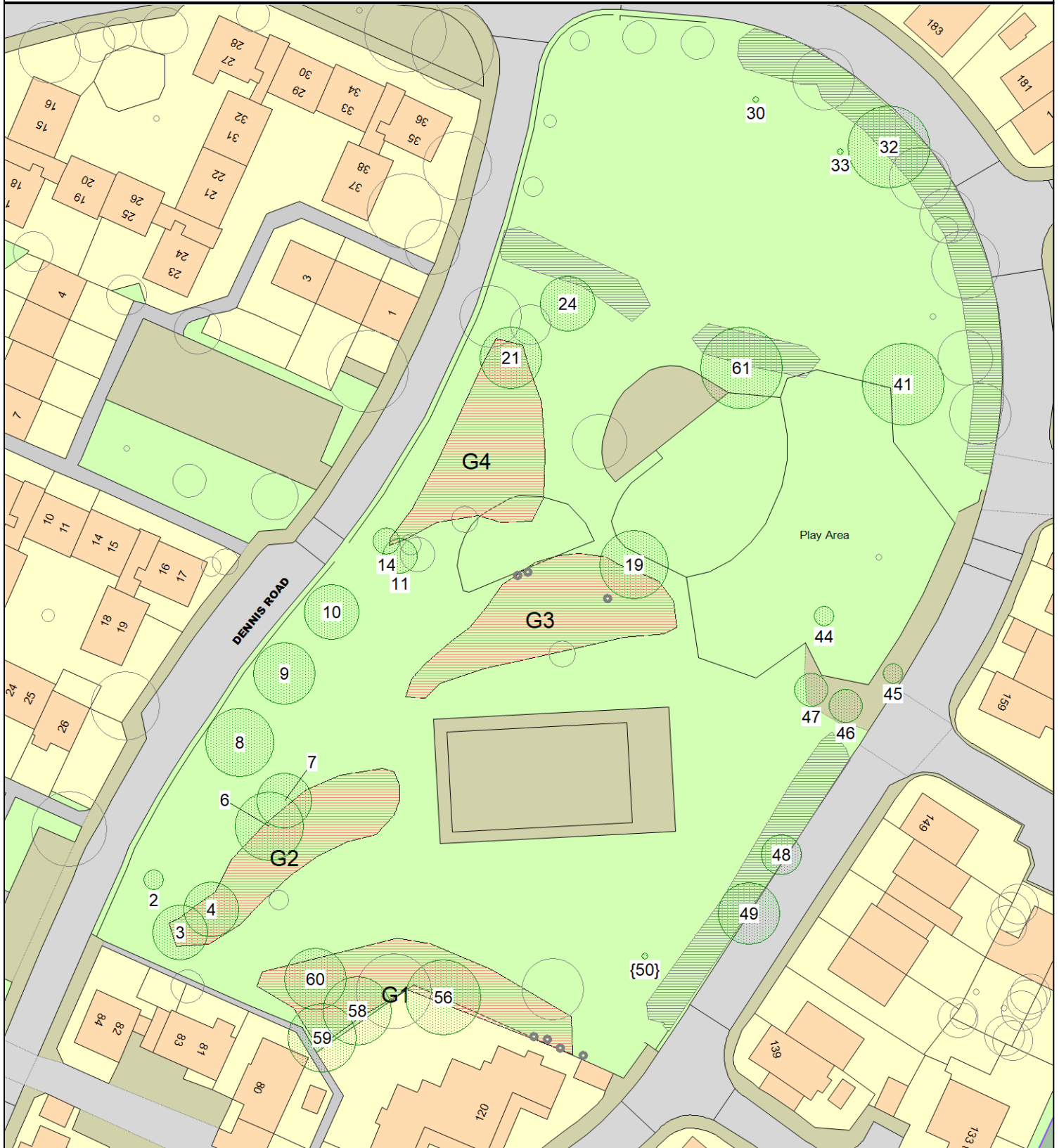
Dudley Road Play Area (DUDLET), Abbey



ARBORICULTURAL WORKS ORDER

Item Ref: 02462

Thorpe Way Play Area (THORPY), Abbey



This map is reproduced from Ordnance Survey material with the permission of Her Majesty's Stationery Office (c) Crown copyright.
Unauthorised reproduction infringes Crown copyright and may lead to prosecution or civil proceedings." Cambridge City Council (Licence No. 100019730)
2006.

ARBORICULTURAL WORKS ORDER

Item Ref: 02462

Velos Walk Play Area (VELOSX), Abbey

