

PLANNED TREE MAINTENANCE

Tree Works Notification		Created By:	
Public Scrutiny		Date:	
Tree Works reference number and schedule title			
Wards included within planned works:			
Abbey		East Chesterton	
Arbury		Kings Hedges	
Castle		Market	
Cherry Hinton		Newnham	
Coleridge		Petersfield	
Within following Council service areas:			
Highways		Housing	
		Parks	
Size of schedule – based on number of trees included within:			
Small (< 10 trees)		Medium (11 - 50 trees)	
		Large (> 50 trees)	
Brief description of the works			

Tree Works Notification

For tree works submitted under a 'Tree Works Notification' I refer you to Policy GM3 of the Cambridge City Council Citywide Tree Strategy 2016-2026 Part 2:

"All planned tree works will be published on the Council website and through site notices for the community to access at least 20 working days before implementation. The council sees this as an important tool for communicating to the local community about tree work planned for their area and the reasons why the works are necessary." <https://www.cambridge.gov.uk/tree-strategy>

The notification period will run for 20 days from the date of publication of the schedule.

The majority of the works contained within these schedules consists of minor pruning to address health and safety issues, or more significant works to remove trees that are obviously dead, dying or diseased, or replacement planting for trees that have been removed.

A brief outline of the planned works can be found in the table shown above however; full details of the planned works can be found within the attached schedules and maps.

Please note: where trees are due to be felled, these are marked on site with green tape.

Public Scrutiny

For tree works submitted for 'Public Scrutiny' A brief outline of the planned works which we wish to be publicly scrutinised can be found within the attached schedules and maps which will be available for ten working days following the date of publication.

The planned works could involve either removing healthy trees over 75mm in diameter as measured at 1.5m above ground level and/or any tree work or batch of works that will have a significant impact on the landscape character of an area as assessed by an arboricultural officer. This will include crown reductions of over 30% in branch length on trees that have not previously been reduced.

The table above provides details of the works which are open for public scrutiny, please note that some tree works schedules may contain other works in other service areas than those open to this level of scrutiny. The following details only relate to the significant works considered for scrutiny. Please note: where trees are

due to be felled, these are clearly marked on site with green tape.

I refer you to Policy GM5 of the Cambridge City Council [Citywide Tree Strategy 2016-2026 Part 2](#):

“When considering tree works on City Council land, the Council will invite resident and stakeholder comment regarding the following kinds of work:

- a) Any tree work which will have a significant impact on the character of an area.*
- b) Felling healthy trees of over 75mm diameter”*

If you wish to make a comment about any of the works proposed, please submit them via this link: [Comment on a tree work schedule](#). All unresolved objections to tree work subject to public scrutiny will be determined by the relevant Executive Councillor.

Location:

PMP Cherry Hinton Hall

Site type:

Order no/ref:

Contract/Client Ref:

Item created: 10 July 2025

Priority of works:

Start on/after:

Complete by:

Tree/Item code	Species/Work required	Rate	Quantity	Cost
----------------	-----------------------	------	----------	------

Cherry Hinton Hall (CHERRN), Cherry Hinton

Sgl/5 (507084)	Aesculus (Red Horse Chestnut) (Aesculus x carnea) (///line.rounds.testers)			
CL2.5	Crown lift to 2.5m		1 tree	
Sgl/18 (504904)	Beech (Common) (Fagus sylvatica) (///using.chef.fetch)			
RDW	Rem - deadwood		1 tree	0.00
Grp/19 (820080)	Various species (Various species) (///songs.study.echo)			
CRS	C/R - sides by over play area by 1-1.5m		3 trees	0.00
Sgl/22 (504864)	Beech (Common) (Fagus sylvatica) (///meal.dish.combining)			
RDW	Rem - deadwood over road		1 tree	0.00
Sgl/30 (506084)	Beech (Common) (Fagus sylvatica) biggest Beech in the group (///winner.soaks.river)			
RDW	Rem - deadwood		1 tree	0.00
TCK	Inspection/ checking to check the cavity at approx height of 10m. meet tree officer onsite to oversee climbing inspection		1 tree	0.00
Sgl/33 (506096)	Beech (Common) (Fagus sylvatica) (///single.audit.pillow)			
RDW	Rem - deadwood		1 tree	0.00
Sgl/37 (529348)	Poplar (Unspecified) (Populus species) (///firms.twist.worked)			
SSIVY	Sever and strip ivy up to 1 metre above ground level		1 tree	
RDW	Rem - deadwood		1 tree	0.00
Sgl/38 (529352)	Poplar (Unspecified) (Populus species) (///firms.twist.worked)			
RDW	Rem - deadwood		1 tree	0.00
Sgl/40 (506124)	Beech (Common) (Fagus sylvatica) (///shrimp.blog.snows)			
\$WR	Recommended Works - see Comments coppice sycamore suckers at base of tree		1 tree	
RDW	Rem - deadwood		1 tree	0.00
Sgl/45 (506132)	Beech (Common) (Fagus sylvatica) (///pushy.monks.rating)			
CL3	Crown lift to 3m		1 tree	

Tree/Item code	Species/Work required	Rate	Quantity	Cost
Sgl/51 (504800) COP Coppice 1m high coppice stool. coppice elder also	Thorn (Hawthorn) (<i>Crataegus monogyna</i>) (///haven.unfair.soft)		1 tree	0.00
Sgl/66 (504956) CL2.5 Crown lift to 2.5m	Persian Ironwood (Common) (<i>Parrotia persica</i>) (///cups.riding.candy)		1 tree	
Sgl/67 (504944) CL2.5 Crown lift to 2.5m	Beech (Common) (<i>Fagus sylvatica</i>) (///frog.hills.vines)		1 tree	
Sgl/68 (504940) CL2.5 Crown lift to 2.5m	Persian Ironwood (Common) (<i>Parrotia persica</i>) (///maps.mostly.crew)		1 tree	
Sgl/92 (505348) RSK REM - stake	Pine (Monterey) (<i>Pinus radiata</i>) (///chain.flood.bunch)		1 tree	0.00
Sgl/95 (504968) CL2.5 Crown lift to 2.5m	Persian Ironwood (Common) (<i>Parrotia persica</i>) (///hangs.drum.dangerously)		1 tree	
Sgl/96 (504972) RDW Rem - deadwood	Maple (Sycamore) (<i>Acer pseudoplatanus</i>) (///marked.garden.keys)		1 tree	0.00
Sgl/98 (504996) RFR Rem - tree for replant	Aesculus (Horse Chestnut) (<i>Aesculus hippocastanum</i>) (///keep.just.bonds)		1 tree	0.00
Sgl/102 (505020) RPC Rem - epicormics	Maple (Sycamore) (<i>Acer pseudoplatanus</i>) (///client.hope.dreams)		1 tree	0.00
Sgl/103 (505048) RDV Conservation deadwood	Oak (English) (<i>Quercus robur</i>) (///reader.adjust.pepper)		1 tree	0.00
Sgl/104 (505024) CRHG C/R - height by 50%. This is because of decay at base of tree	Alder (Common) (<i>Alnus glutinosa</i>) (///agrees.verbs.relate)		1 tree	0.00
Sgl/125 (505064) CL3 Crown lift to 3m over footpath	Aesculus (Horse Chestnut) (<i>Aesculus hippocastanum</i>) (///switch.reduce.whites)		1 tree	
Sgl/127 (506384) \$WR Recommended Works - see Comments fell dead tree leaving 1.5m high stump leave timber in whole length on the ground	Alder (Common) (<i>Alnus glutinosa</i>) (///areas.slice.unions)		1 tree	
Sgl/134 (505036) CRT C/R - by 50% due to poor structural strength	Willow (Chinese Weeping) (<i>Salix babylonica</i>) (///hint.sits.kicked)		1 tree	0.00
Sgl/135 (505040) CRL C/R - to clear lamp by 0.5-1m	Oak (English) (<i>Quercus robur</i>) (///slices.proven.frock)		1 tree	0.00

Tree/Item code	Species/Work required	Rate	Quantity	Cost
Sgl/145 (504760) RDW Rem - deadwood in lower crown	Ash (Common) (Fraxinus excelsior) (///custom.than.usage)		1 tree	0.00
Sgl/152 (504708) RFR Rem - tree for replant	Apple (Pillar Crab) (Malus tschonoskii) (///flight.debit.basis)		1 tree	0.00
Sgl/154 (504716) CL2.5 Crown lift to 2.5m	Birch (Erman's) (Betula ermanii) (///index.think.estate)		1 tree	
Sgl/155 (504680) CSL C/R.C/L - to clear sightlines by 0.5m of camera and lamp head	Ash (Golden) (Fraxinus excelsior 'Jaspidea') (///began.latter.bucket)		1 tree	0.00
Sgl/173 (510196) RDW Rem - deadwood low hanging branch	Ash (Common) (Fraxinus excelsior) (///terms.added.cult)		1 tree	0.00
Sgl/176 (506352) RFR Rem - tree for replant dead tree	Ash (Common) (Fraxinus excelsior) (///goes.jumps.keeps)		1 tree	0.00
Sgl/177 (506348) CL2.5 Crown lift to 2.5m	Hornbeam (Common) (Carpinus betulus) (///basic.flip.others)		1 tree	
Sgl/201 (536992) COP Coppice	Maple (Sycamore) (Acer pseudoplatanus) (///famed.influencing.chemistry)		1 tree	0.00
Sgl/206 (505148) CL3 Crown lift to 3m	Ash (Common) (Fraxinus excelsior) (///gross.zoom.relate)		1 tree	
Sgl/207 (505144) CL3 Crown lift to 3m	Ailanthus (Tree of Heaven) (Ailanthus altissima) (///like.sang.holly)		1 tree	
Sgl/208 (505136) CL3 Crown lift to 3m	Ash (Common) (Fraxinus excelsior) (///sends.modes.certified)		1 tree	
Sgl/215 (513800) CL4 Crown lift to 4m over pool area	Maple (Field) (Acer campestre) (///scale.star.venues)		1 tree	
Sgl/216 (505220) CL4 Crown lift to 4m over pool area	Maple (Field) (Acer campestre) (///sung.oddly.clubs)		1 tree	
Sgl/222 (505236) RDW Rem - deadwood	Alder (Italian) (Alnus cordata) (///nurses.slices.tame)		1 tree	0.00
Sgl/224 (505244) CRC C/R - to clear play equipment by reducing low branch back by 2m	Beech (Common) (Fagus sylvatica) (///flags.bands.behind)		1 tree	0.00

Tree/Item code	Species/Work required	Rate	Quantity	Cost
Sgl/227 (505280) RDW Rem - deadwood	Poplar (Chinese Necklace) (<i>Populus lasiocarpa</i>) (///people.fades.vocal)		1 tree	0.00
Sgl/228 (505256) BRANC	Oak (English) (<i>Quercus robur</i>) (///alone.juices.boot) Reduce specified branch by reduce co dominant branch by 4m that extends towardsth3 tennis courts. this is due to extensive decay on top of the branch		1 tree	
Sgl/248 (511572) RSK REM - stake	Birch (Chinese Red Barked) (<i>Betula albosinensis</i> 'Fascination') (///estate.slope.device)		1 tree	0.00
Sgl/249 (511564) RSK REM - stake RTC remove tree cage	Pine (Monterey) (<i>Pinus radiata</i>) (///codes.snap.milky)		1 tree 1 tree	0.00 0.00
Sgl/258 (507616) CRT C/R - by 6-7m RDW Rem - deadwood	Ash (Common) (<i>Fraxinus excelsior</i>) (///yoga.brass.target)		1 tree 1 tree	0.00 0.00
Sgl/273 (511324) RFR Rem - tree for replant	Ash (Common) (<i>Fraxinus excelsior</i>) (///taped.detect.supporter)		1 tree	0.00
Sgl/274 (507628) RDW Rem - deadwood remove large dead branch in centre of Crown.	Willow (White) (<i>Salix alba</i>) (///oath.outfit.abode)		1 tree	0.00
Sgl/281 (504820) CL2.5 Crown lift to 2.5m RDW Rem - deadwood low dead branch over track	Ash (Common) (<i>Fraxinus excelsior</i>) (///upgrading.stays.soak)		1 tree 1 tree	0.00
Sgl/285 (506280) CLT C/L - to 1.5m	Beech (Common) (<i>Fagus sylvatica</i>) (///vocal.gave.online)		1 tree	0.00
Sgl/296 (507100) CLW C/L - over highway to 5m	Oak (Turkey) (<i>Quercus cerris</i>) (///still.robots.beyond)		1 tree	0.00
Sgl/336 (507576) CL3 Crown lift to 3m over track	Beech (Copper) (<i>Fagus sylvatica</i> f. <i>purpurea</i>) (///loaf.king.gender)		1 tree	
Sgl/337 (507588) CRT C/R - by 3-4m reduce the upper crown removing most of the dead wood	Beech (Common) (<i>Fagus sylvatica</i>) (///gasp.bulb.crush)		1 tree	0.00
Sgl/340 (507612) CRT C/R - by 6-7m RDW Rem - deadwood	Beech (Common) (<i>Fagus sylvatica</i>) (///crown.riots.losses)		1 tree 1 tree	0.00 0.00

Tree/Item code	Species/Work required	Rate	Quantity	Cost
Sgl/345 (506996) CLF C/L - over footpath to 2.4m	Beech (Common) (Fagus sylvatica) (///enjoyable.lock.cycle)		1 tree	0.00
Sgl/346 (506940) RDW Rem - deadwood	Beech (Common) (Fagus sylvatica) (///heat.sage.abode)		1 tree	0.00
Sgl/348 (514580) CLF C/L - over footpath to 2.4m	Beech (Common) (Fagus sylvatica) (///soaks.bigger.actor)		1 tree	0.00
Sgl/367 (505376) CL3 Crown lift to 3m	Hornbeam (Fastigate) (Carpinus betulus 'Fastigiata') (///linked.vows.novel)		1 tree	
Sgl/368 (505380) RDW Rem - deadwood	Maple (Box Elder) (Acer negundo) (///focal.lonely.wounds)		1 tree	0.00
Sgl/371 (505428) RDW Rem - deadwood	Maple (Norway Cv.) (Acer platanoides 'Crimson King') (///gets.soils.bliss)		1 tree	0.00
Sgl/372 (505424) CLF C/L - over footpath to 2.4m	Thorn (Hybrid Cockspur) (Crataegus x lavalleyi) (///hungry.coins.crate)		1 tree	0.00
Sgl/373 (506196) CL2.5 Crown lift to 2.5m	Hornbeam (Common) (Carpinus betulus) (///fortunate.tested.relax)		1 tree	
Sgl/375 (506928) CL3 Crown lift to 3m	Leyland Cypress (Common) (x Cupressocyparis leylandii) (///merit.heap.epic)		1 tree	
Sgl/384 (505472) CL2.5 Crown lift to 2.5m RPC Rem - epicormics	Sorbus (Rowan) (Sorbus aucuparia) (///ledge.shows.stable)		1 tree 1 tree	 0.00
Sgl/385 (536944) RSK REM - stake	Sorbus (Rowan Cv.) (Sorbus aucuparia 'Sheerwater Seedling') (///spin.giving.risky)		1 tree	0.00
Sgl/386 (505476) CL2.5 Crown lift to 2.5m	Hornbeam (Common) (Carpinus betulus) (///hiking.whites.drama)		1 tree	
Sgl/390 (505504) BRANC Reduce specified branch by remove large low branch which has extensive dieback IIH In house inspection - Detailed Census	Maple (Sycamore) (Acer pseudoplatanus) (///follow.pigs.voters)		1 tree 1 tree	
Sgl/391 (505548) CRHG C/R - height by 2-3m RHG Remove - lodging branch	Prunus (Purple-leaf Plum) (Prunus cerasifera 'Nigra') (///when.door.reform)		1 tree 1 tree	0.00 0.00

Tree/Item code	Species/Work required	Rate	Quantity	Cost
Sgl/392 (505552) RDW Rem - deadwood	Maple (Sycamore) (Acer pseudoplatanus) (///bats.park.repair)		1 tree	0.00
Sgl/393 (505560) RDW Rem - deadwood	False Acacia (Common) (Robinia pseudoacacia) (///barks.region.wider)		1 tree	0.00
Sgl/412 (505408) CL3 Crown lift to 3m	Maple (Norway Cv.) (Acer platanoides 'Crimson King') (///secure.almost.happy)		1 tree	
Sgl/415 (505436) RDW Rem - deadwood in lower crown over footpath	Pine (Black) (Pinus nigra) (///feel.visits.into)		1 tree	0.00
Sgl/418 (505388) RDW Rem - deadwood in lower crown	Maple (Sycamore Cv.) (Acer pseudoplatanus f. purpureum) (///cases.broad.badge)		1 tree	0.00
Sgl/420 (505404) RDW Rem - deadwood	Maple (Paperbark) (Acer griseum) (///gender.hiding.drift)		1 tree	0.00
Sgl/430 (514104) SSIVY Sever and strip ivy up to 1 metre above ground level	Beech (Copper) (Fagus sylvatica f. purpurea) (///will.outer.shares)		1 tree	
Sgl/439 (506868) RDW Rem - deadwood central crown	Beech (Fern Leaf) (Fagus sylvatica 'Asplenifolia') (///trade.pump.grant)		1 tree	0.00
Sgl/441 (506876) RPC Rem - epicormics	Maple (Caucasian) (Acer cappadocicum) (///sofa.spider.agrees)		1 tree	0.00
Sgl/442 (506880) RPC Rem - epicormics	Maple (Caucasian) (Acer cappadocicum) (///sooner.fuel.nobody)		1 tree	0.00
Sgl/445 (506896) CRS C/R - sides by reduce the regrowth on the southeastern primary branches by two to three meters.	Aesculus (Horse Chestnut) (Aesculus hippocastanum) (///having.corner.poppy)		1 tree	0.00
Sgl/462 (506300) RDW Rem - deadwood	Apple (Pillar Crab) (Malus tschonoskii) (///chase.escape.boots)		1 tree	0.00
Sgl/463 (505516) RDC Complete deadwood	Maple (Sycamore) (Acer pseudoplatanus) (///played.struck.lime)		1 tree	0.00
Sgl/483 (504660) RPC1 Remove epicormics up to 1m agl SSIVY Sever and strip ivy up to 1 metre above ground level	Apple (Pillar Crab) (Malus tschonoskii) (///pasta.easy.puppy)		1 tree 1 tree	

Tree/Item code	Species/Work required	Rate	Quantity	Cost
Sgl/534 (505832) RD3 Reduce stake by 50%	Lime (Large Leaf) (<i>Tilia platyphyllos</i>) (///bunch.coach.gift)		1 tree	0.00
Sgl/536 (505824) RD3 Reduce stake by 50% and	Lime (Large Leaf) (<i>Tilia platyphyllos</i>) (///towers.cone.cross)		1 tree	0.00
Sgl/538 (505812) SSIVY Sever and strip ivy up to 1 metre above ground level	Maple (Sycamore) (<i>Acer pseudoplatanus</i>) (///host.humans.bound)		1 tree	
Sgl/551 (820020) CLF C/L - over footpath to 2.4m	Ash (Common) (<i>Fraxinus excelsior</i>) (///market.rear.dust)		1 tree	0.00
Sgl/552 (820016) CLF C/L - over footpath to 2.4m	Oak (English) (<i>Quercus robur</i>) (///homes.bonus.ending)		1 tree	0.00
Sgl/553 (820012) CLF C/L - over footpath to 2.4m	Ash (Common) (<i>Fraxinus excelsior</i>) (///value.drop.energy)		1 tree	0.00
Sgl/559 (511420) CRHG C/R - height by 6-7m	Ash (Common) (<i>Fraxinus excelsior</i>) (///tell.foil.supper)		1 tree	0.00
Sgl/574 (511468) CLF C/L - over footpath to 2.4m	Oak (English) (<i>Quercus robur</i>) (///rich.models.either)		1 tree	0.00
Sgl/583 (505316) CL3 Crown lift to 3m	Alder (Italian) (<i>Alnus cordata</i>) (///idea.tasty.sheet)		1 tree	
Sgl/585 (505308) CLF C/L - over footpath to 2.4m RDV Conservation deadwood Light dead wood;	Oak (English) (<i>Quercus robur</i>) (///rang.honest.scars)		1 tree 1 tree	0.00 0.00
Sgl/591 (505204) CL3 Crown lift to 3m RPC Rem - epicormics	Wing Nut (Caucasian) (<i>Pterocarya fraxinifolia</i>) (///brain.leaves.vital)		1 tree 1 tree	 0.00
Sgl/597 (505284) RDV Conservation deadwood	Oak (English) (<i>Quercus robur</i>) (///ocean.pits.kinks)		1 tree	0.00
Sgl/599 (505276) CL2.5 Crown lift to 2.5m	Oak (English) (<i>Quercus robur</i>) (///penny.deeply.boring)		1 tree	
Sgl/600 (505288) RSK REM - stake	Oak (Hungarian) (<i>Quercus frainetto</i>) (///hood.renew.photos)		1 tree	0.00

Tree/Item code	Species/Work required	Rate	Quantity	Cost
Sgl/603 (506288) CL2.5 Crown lift to 2.5m	Oak (English) (<i>Quercus robur</i>) (///ducks.help.sounds)		1 tree	
Sgl/609 (514704) RFR Rem - tree for replant	Ash (Common) (<i>Fraxinus excelsior</i>) (///orange.fence.lifted)		1 tree	0.00
Sgl/615 (507904) SSIVY Sever and strip ivy up to 1 metre above ground level	Maple (Field) (<i>Acer campestre</i>) (///rock.urgent.freed)		1 tree	
Sgl/623 (820072) CRT C/R - by 50% due to major lean and resting on neighbouring trees	Willow (Crack) (<i>Salix fragilis</i>) (///pets.slowly.highs)		1 tree	0.00
Sgl/627 (820100) CLF C/L - over footpath to 2.4m	Oak (English) (<i>Quercus robur</i>) (///serve.still.city)		1 tree	0.00
Sgl/628 (820104) CLF C/L - over footpath to 2.4m	Alder (Common) (<i>Alnus glutinosa</i>) (///trace.bulb.stump)		1 tree	0.00
Sgl/645 (820111) CL3 Crown lift to 3m over car park	Elm (English) (<i>Ulmus procera</i>) (///enable.bucket.other)		1 tree	
Sgl/648 (820114) RT1 Remove tree leaving 1m high stump	Beech (Common) (<i>Fagus sylvatica</i>) (///colleague.bunny.nasal)		1 tree	
Sgl/649 (820115) RGL Rem - tree to ground level dead tree	Thorn (Hawthorn) (<i>Crataegus monogyna</i>) (///damp.rungs.tune)		1 tree	0.00
Sgl/650 (820116) COP Coppice	Elm (Wych) (<i>Ulmus glabra</i>) (///prep.label.charm)		1 tree	0.00
Sgl/651 (820117) CLF C/L - over footpath to 2.4m	Beech (Common) (<i>Fagus sylvatica</i>) (///nods.upper.fuel)		1 tree	0.00
Sgl/656 (820122) RGL Rem - tree to ground level	Leyland Cypress (Common) (<i>x Cupressocyparis leylandii</i>) (///belong.tolls.truly)		1 tree	0.00
Sgl/657 (820123) RT1 Remove tree leaving 1m high stump dead tree	Maple (Sycamore) (<i>Acer pseudoplatanus</i>) (///that.above.finger)		1 tree	
Sgl/658 (820124) CLF C/L - over footpath to 2.4m	Ash (Common) (<i>Fraxinus excelsior</i>) (///really.tides.meant)		1 tree	0.00
Sgl/659 (820125) RGL Rem - tree to ground level	Birch (Unspecified) (<i>Betula</i> species) (///went.pies.kicks)		1 tree	0.00

Tree/Item code	Species/Work required	Rate	Quantity	Cost
Sgl/660 (820126) RGL Rem - tree to ground level	Birch (Unspecified) (Betula species) (///went.pies.kicks)		1 tree	0.00
Sgl/662 (820128) CLF C/L - over footpath to 2.4m	Ash (Common) (Fraxinus excelsior) (///faster.pumps.wished)		1 tree	0.00
Sgl/663 (820129) BRANC Reduce specified branch by reduce the co dominant stem, north eastern side, (with Decay and King Alfred's cakes) that is facing the tennis courts by 50%	Ash (Common) (Fraxinus excelsior) (///vast.grapes.winter)		1 tree	
Sgl/669 (820135) RDW Rem - deadwood	Ash (Common) (Fraxinus excelsior) (///actors.dates.traps)		1 tree	0.00
Sgl/670 (820136) COP Coppice to 1m above metal park fence. clear ivy from stump head to allow the tree to regrow.	Thorn (Hawthorn) (Crataegus monogyna) (///design.shift.smart)		1 tree	0.00
Sgl/671 (820137) COP Coppice to 1m above metal park fence. clear ivy from stump head to allow the tree to regrow.	Thorn (Hawthorn) (Crataegus monogyna) (///design.shift.smart)		1 tree	0.00

Expenditure code analysis :-

Expenditure code not specified

Schedule item analysis :-

CLF	C/L - over footpath to 2.4m	13 trees @ 0.00
CLT	C/L - to	1 tree @ 0.00
CLW	C/L - over highway to 5m	1 tree @ 0.00
COP	Coppice	5 trees @ 0.00
CRC	C/R - to clear	1 tree @ 0.00
CRHG	C/R - height by	3 trees @ 0.00
CRL	C/R - to clear lamp by 0.5-1m	1 tree @ 0.00
CRS	C/R - sides by	4 trees @ 0.00
CRT	C/R - by	5 trees @ 0.00
CSL	C/R.C/L - to clear sightlines by 0.5m	1 tree @ 0.00
RD3	Reduce stake by 50%	2 trees @ 0.00
RDC	Complete deadwood	1 tree @ 0.00
RDV	Conservation deadwood	3 trees @ 0.00
RDW	Rem - deadwood	27 trees @ 0.00
RFR	Rem - tree for replant	5 trees @ 0.00
RGL	Rem - tree to ground level	4 trees @ 0.00
RHG	Remove - lodging branch	1 tree @ 0.00
RPC	Rem - epicormics	5 trees @ 0.00
RSK	REM - stake	5 trees @ 0.00
RTC	remove tree cage	1 tree @ 0.00
TCK	Inspection/ checking	1 tree @ 0.00

Contractor:

2424 PMP Cherry Hinton Hall

2 months

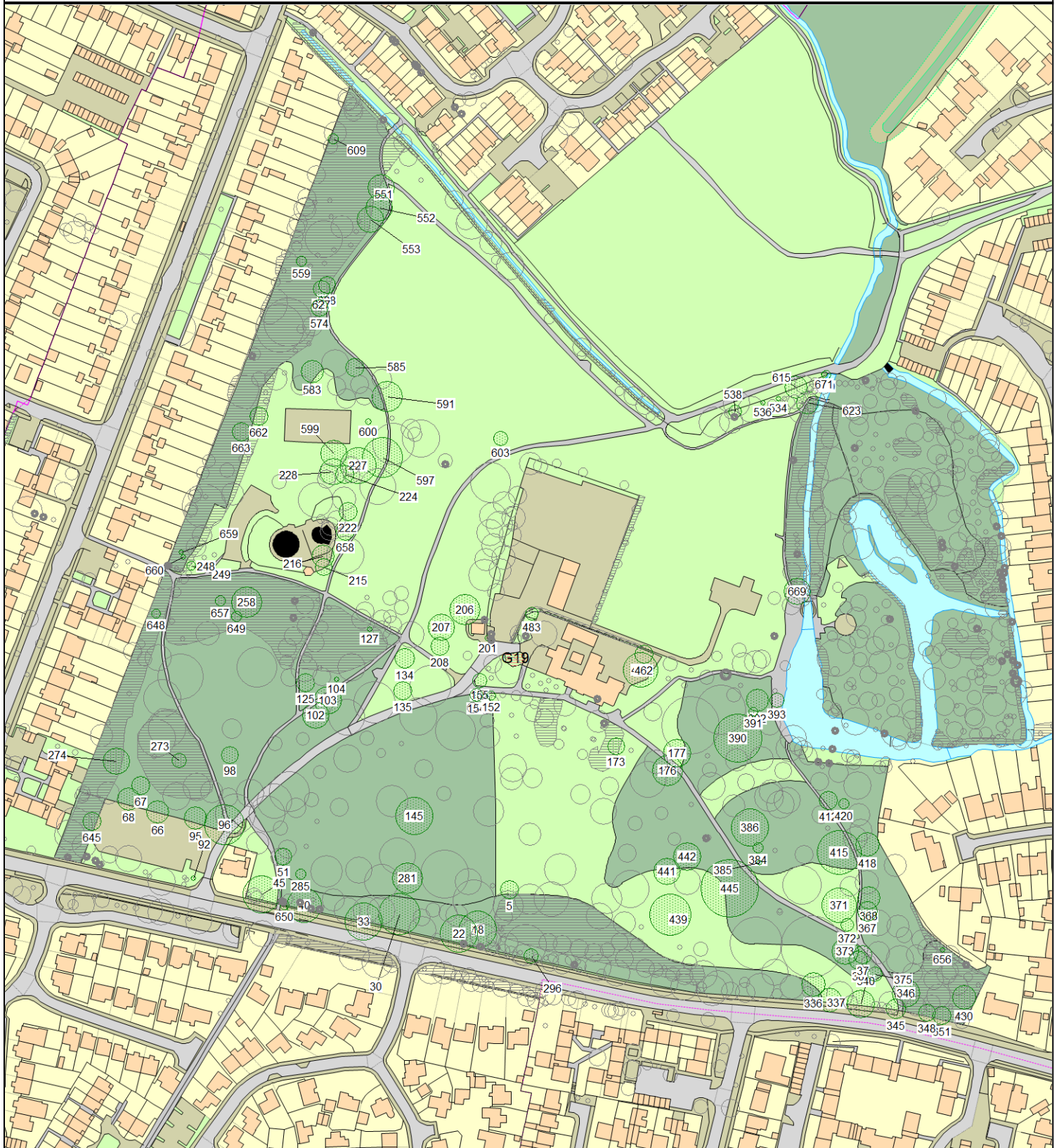
Works to be completed during 11/8/25 28/10/25

Total cost: 0.00

Issued by:

Kenny McGegeor

Cherry Hinton Hall (CHERRN), Cherry Hint

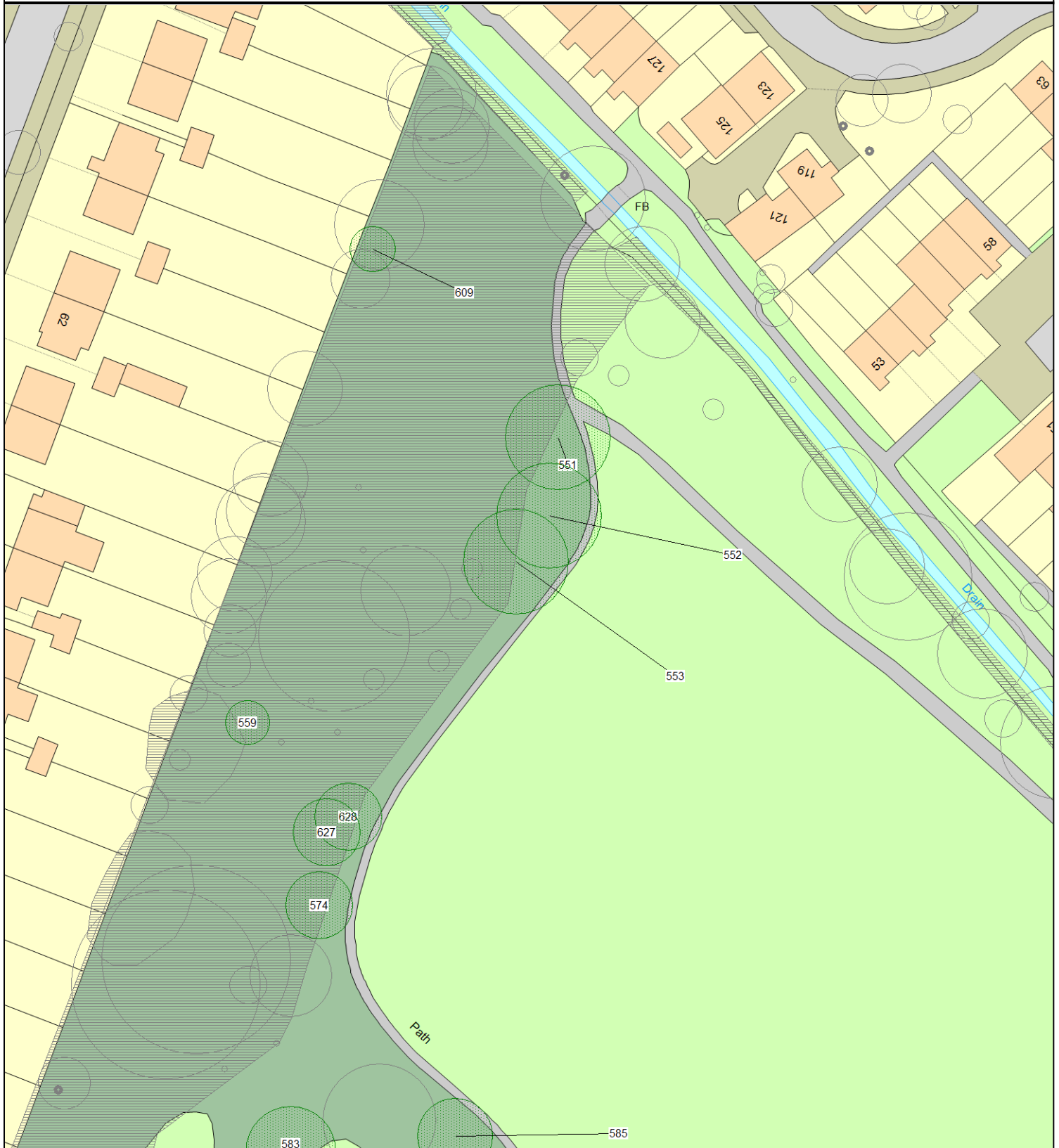


This map is reproduced from Ordnance Survey material with the permission of Her Majesty's Stationery Office (c) Crown copyright. Unauthorised reproduction infringes Crown copyright and may lead to prosecution or civil proceedings." Cambridge City Council (Licence No. 100019730) 2006.

ARBORICULTURAL WORKS ORDER

Item Ref: 02424

Cherry Hinton Hall (CHERRN), Cherry Hinton (1)

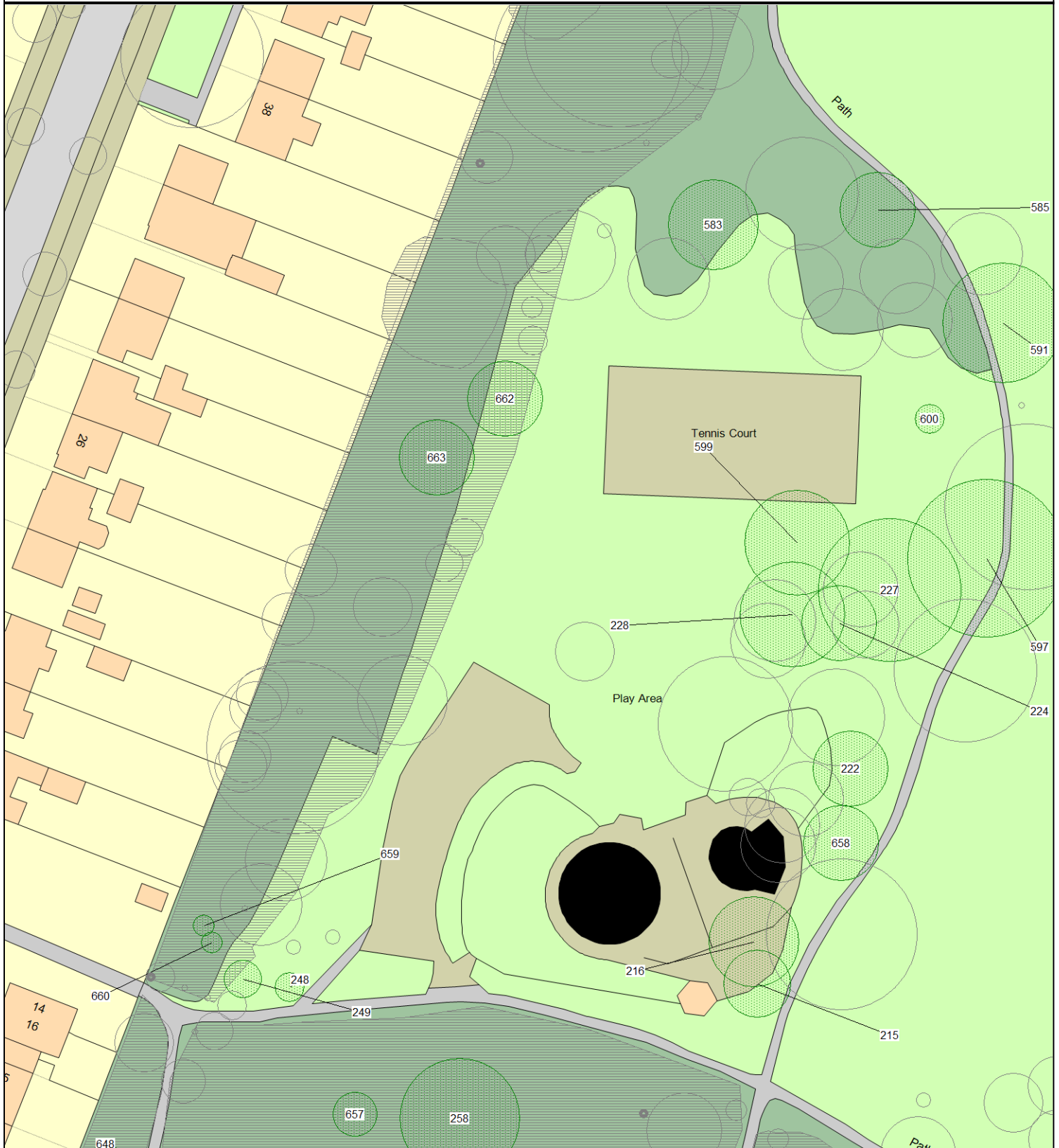


This map is reproduced from Ordnance Survey material with the permission of Her Majesty's Stationery Office (c) Crown copyright.
Unauthorised reproduction infringes Crown copyright and may lead to prosecution or civil proceedings." Cambridge City Council (Licence No. 100019730)
2006.

ARBORICULTURAL WORKS ORDER

Item Ref: 02424

Cherry Hinton Hall (CHERRN), Cherry Hinton (2)

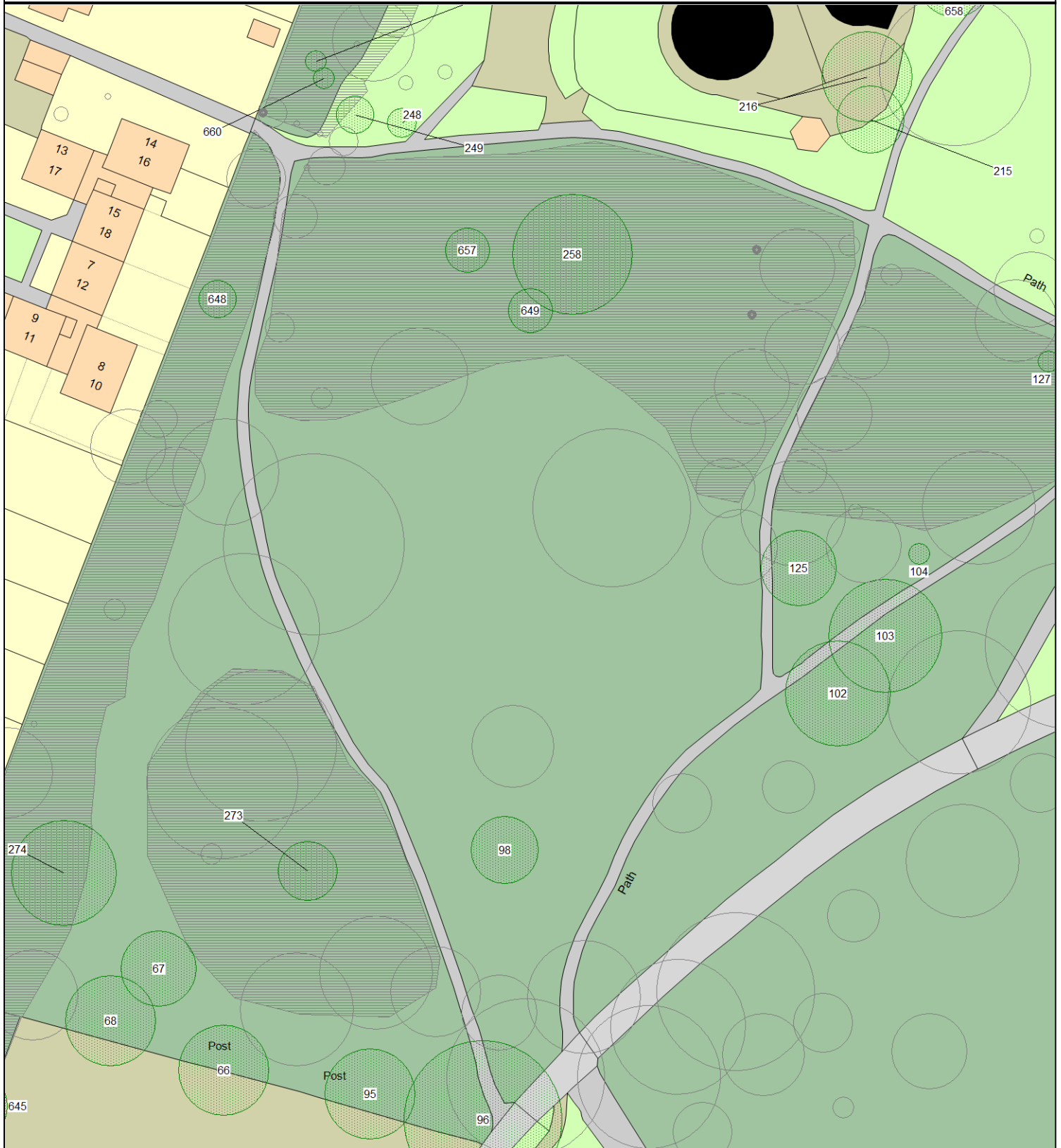


This map is reproduced from Ordnance Survey material with the permission of Her Majesty's Stationery Office (c) Crown copyright. Unauthorised reproduction infringes Crown copyright and may lead to prosecution or civil proceedings." Cambridge City Council (Licence No. 100019730) 2006.

ARBORICULTURAL WORKS ORDER

Item Ref: 02424

Cherry Hinton Hall (CHERRN), Cherry Hinton (3)

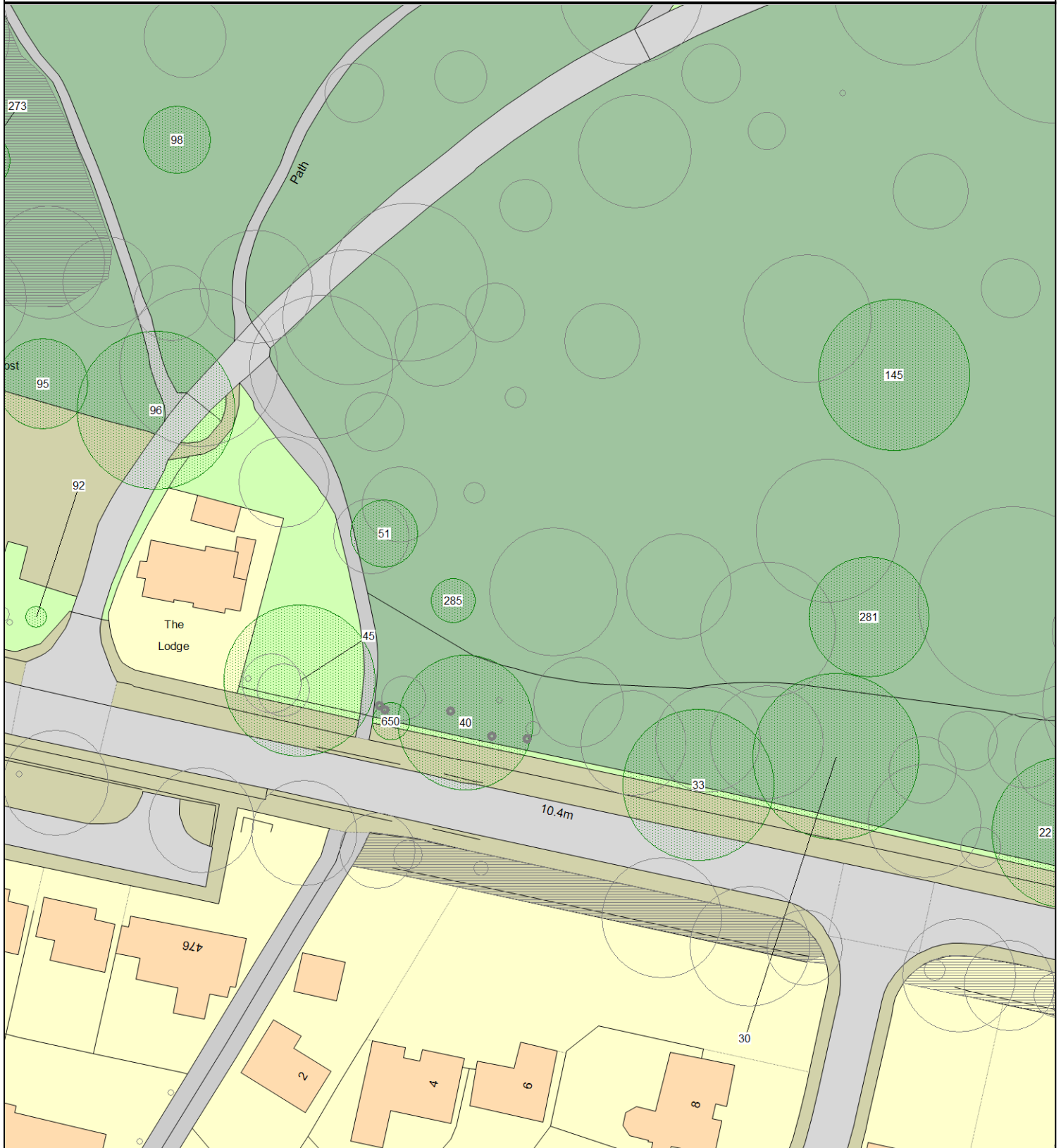


This map is reproduced from Ordnance Survey material with the permission of Her Majesty's Stationery Office (c) Crown copyright.
Unauthorised reproduction infringes Crown copyright and may lead to prosecution or civil proceedings." Cambridge City Council (Licence No. 100019730)
2006.

ARBORICULTURAL WORKS ORDER

Item Ref: 02424

Cherry Hinton Hall (CHERRN), Cherry Hinton (4)

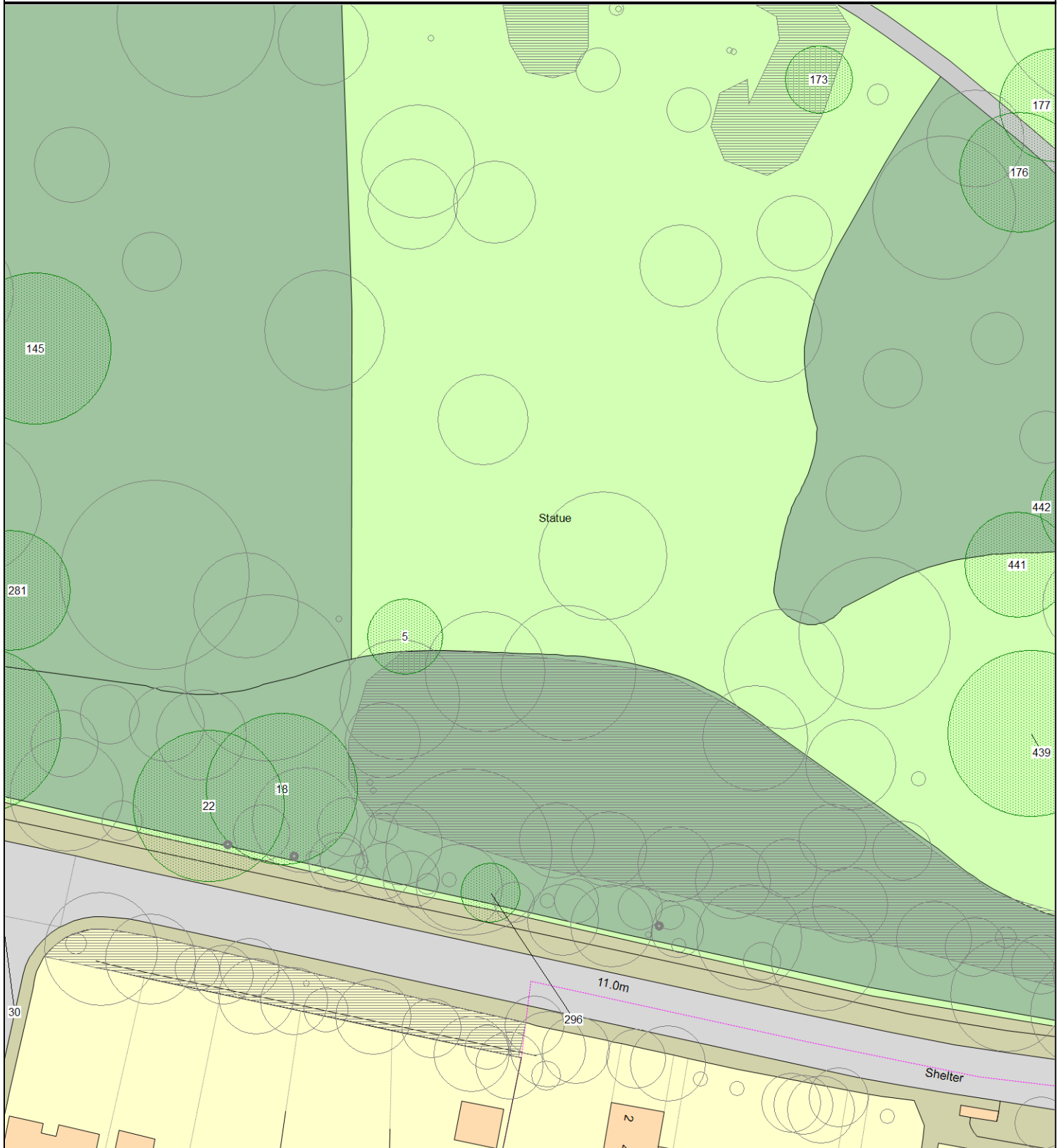


This map is reproduced from Ordnance Survey material with the permission of Her Majesty's Stationery Office (c) Crown copyright.
Unauthorised reproduction infringes Crown copyright and may lead to prosecution or civil proceedings." Cambridge City Council (Licence No. 100019730)
2006.

ARBORICULTURAL WORKS ORDER

Item Ref: 02424

Cherry Hinton Hall (CHERRN), Cherry Hinton (5)

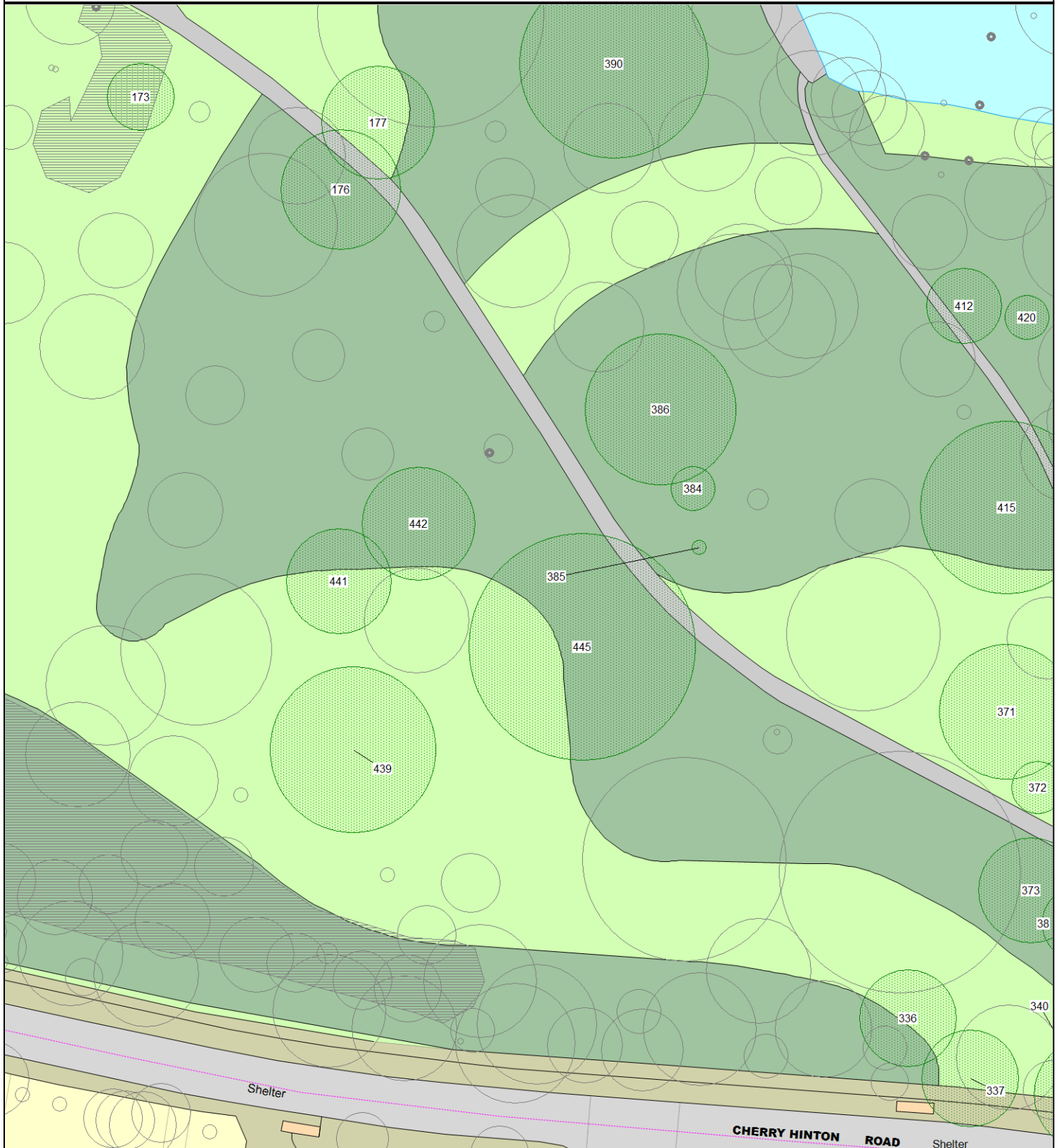


This map is reproduced from Ordnance Survey material with the permission of Her Majesty's Stationery Office (c) Crown copyright.
Unauthorised reproduction infringes Crown copyright and may lead to prosecution or civil proceedings." Cambridge City Council (Licence No. 100019730)
2006.

ARBORICULTURAL WORKS ORDER

Item Ref: 02424

Cherry Hinton Hall (CHERRN), Cherry Hinton (6)

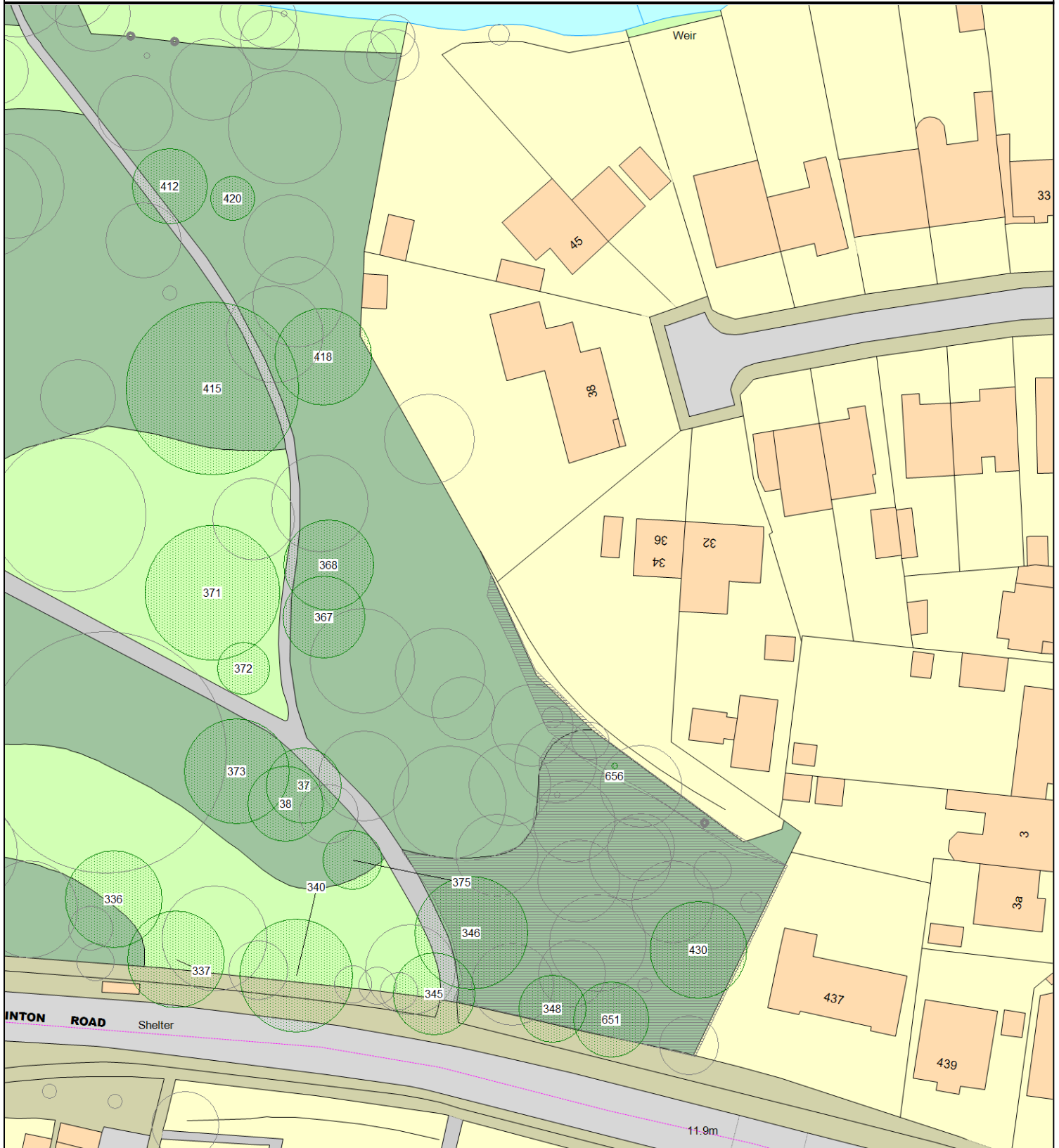


This map is reproduced from Ordnance Survey material with the permission of Her Majesty's Stationery Office (c) Crown copyright.
Unauthorised reproduction infringes Crown copyright and may lead to prosecution or civil proceedings." Cambridge City Council (Licence No. 100019730)
2006.

ARBORICULTURAL WORKS ORDER

Item Ref: 02424

Cherry Hinton Hall (CHERRN), Cherry Hinton (7)

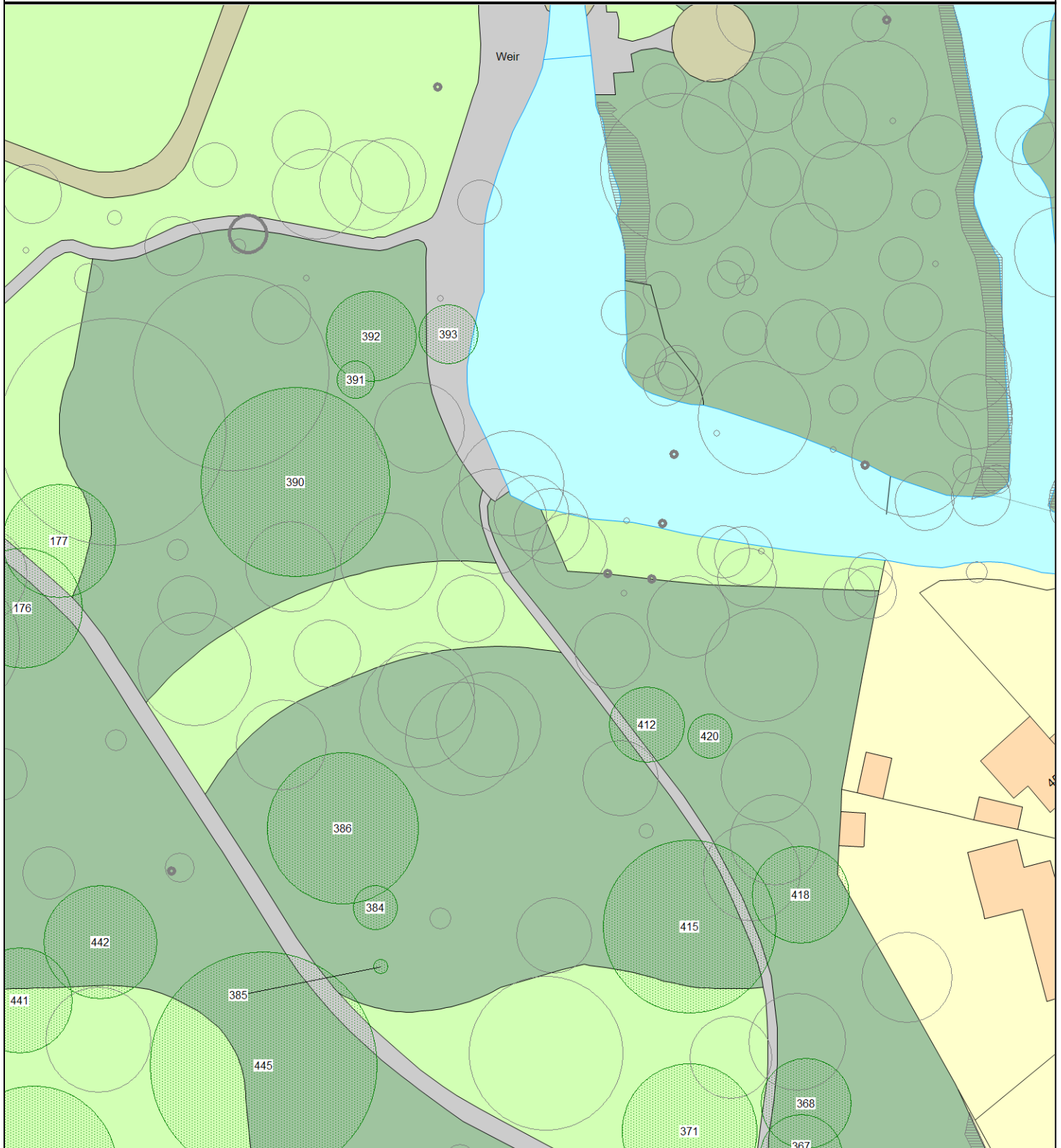


This map is reproduced from Ordnance Survey material with the permission of Her Majesty's Stationery Office (c) Crown copyright.
Unauthorised reproduction infringes Crown copyright and may lead to prosecution or civil proceedings." Cambridge City Council (Licence No. 100019730)
2006.

ARBORICULTURAL WORKS ORDER

Item Ref: 02424

Cherry Hinton Hall (CHERRN), Cherry Hinton (8)

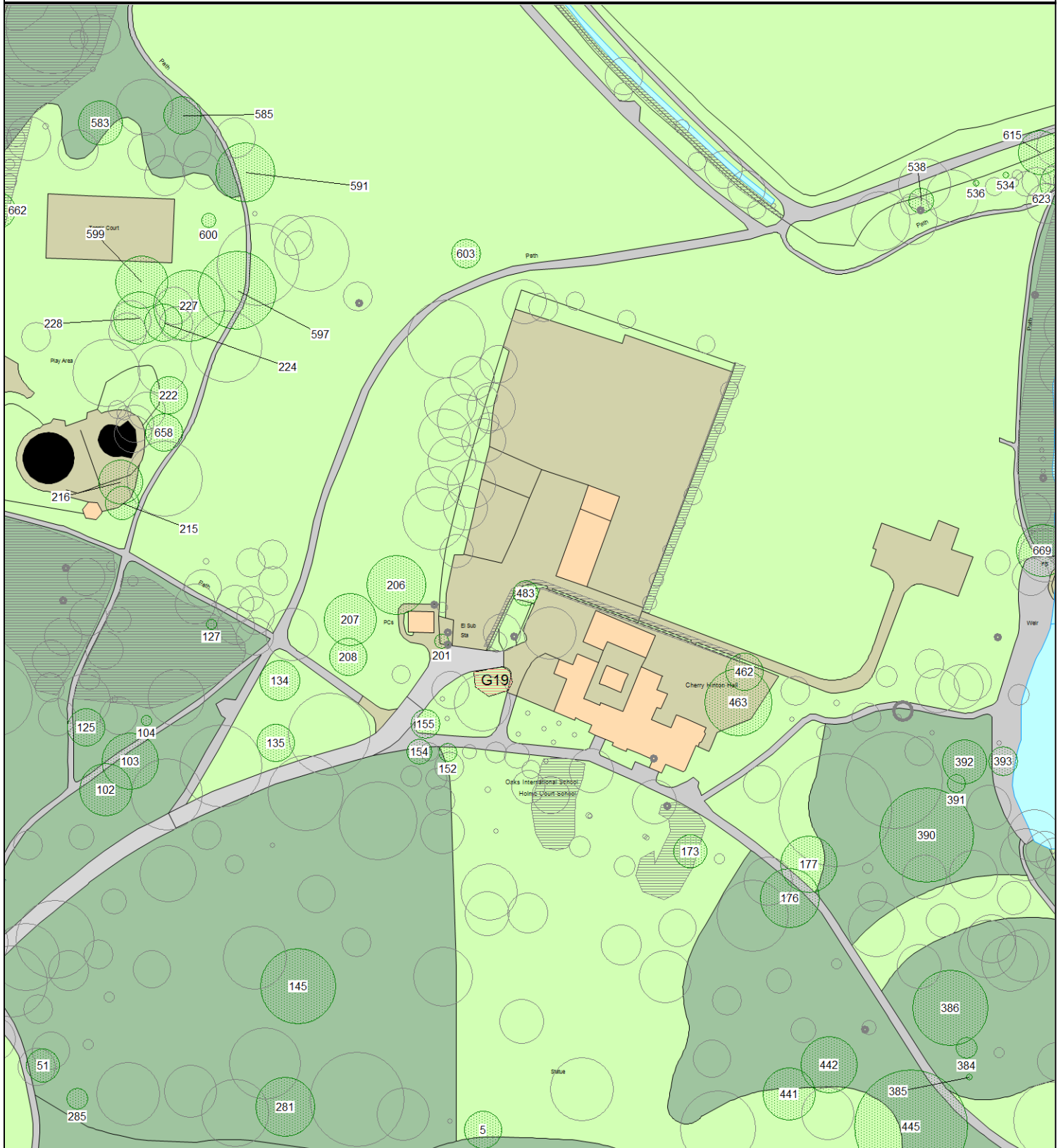


This map is reproduced from Ordnance Survey material with the permission of Her Majesty's Stationery Office (c) Crown copyright.
 Unauthorised reproduction infringes Crown copyright and may lead to prosecution or civil proceedings." Cambridge City Council (Licence No. 100019730)
 2006.

ARBORICULTURAL WORKS ORDER

Item Ref: 02424

Cherry Hinton Hall (CHERRN), Cherry Hinton (9)

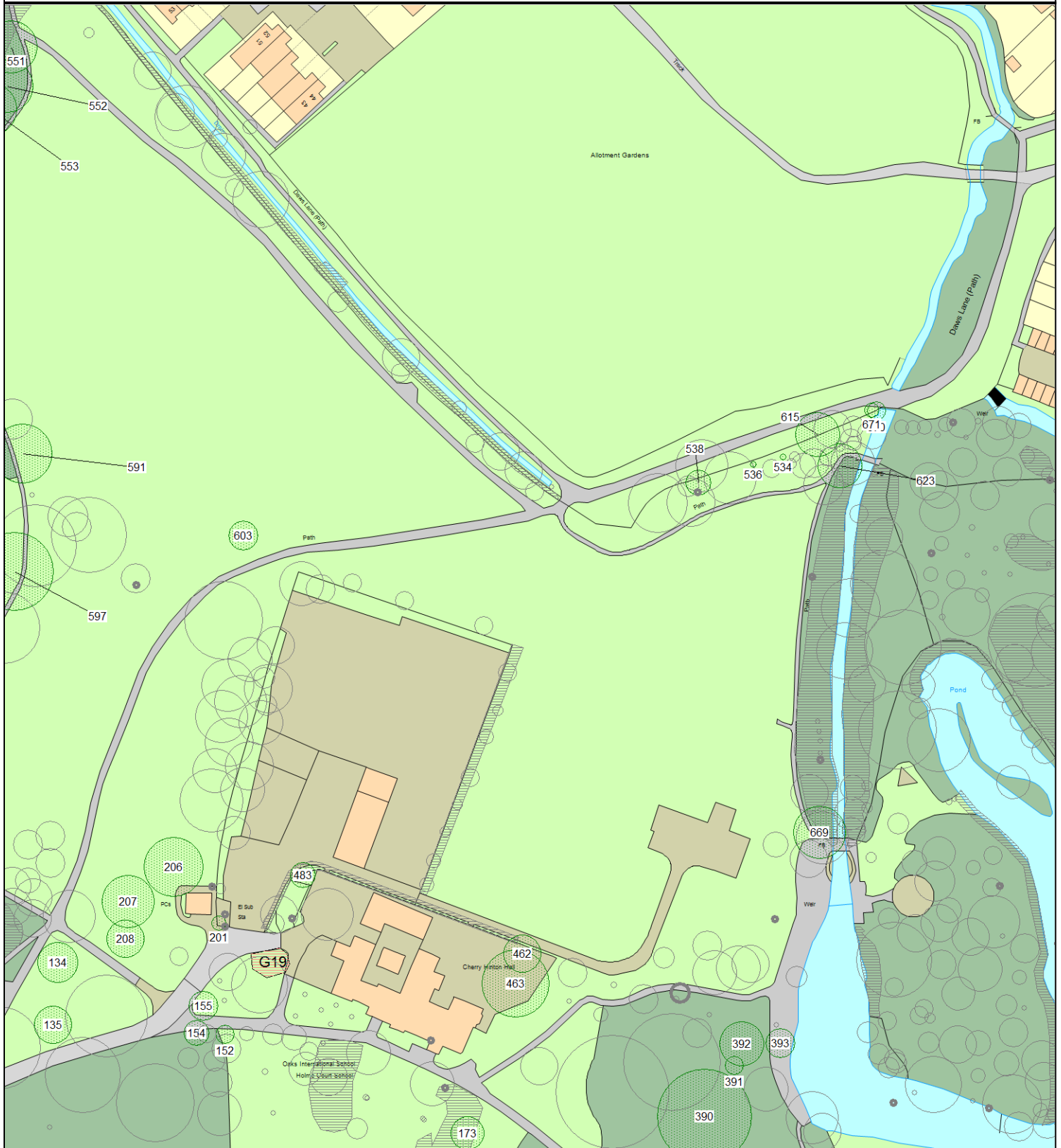


This map is reproduced from Ordnance Survey material with the permission of Her Majesty's Stationery Office (c) Crown copyright.
Unauthorised reproduction infringes Crown copyright and may lead to prosecution or civil proceedings." Cambridge City Council (Licence No. 100019730)
2006.

ARBORICULTURAL WORKS ORDER

Item Ref: 02424

Cherry Hinton Hall (CHERRN), Cherry Hinton (10)



This map is reproduced from Ordnance Survey material with the permission of Her Majesty's Stationery Office (c) Crown copyright. Unauthorised reproduction infringes Crown copyright and may lead to prosecution or civil proceedings." Cambridge City Council (Licence No. 100019730) 2006.

ARBORICULTURAL WORKS ORDER

Item Ref: 02424

Cherry Hinton Hall (CHERRN), Cherry Hinton (11)

