

Cambridge East Community Forum

Wednesday 9 July

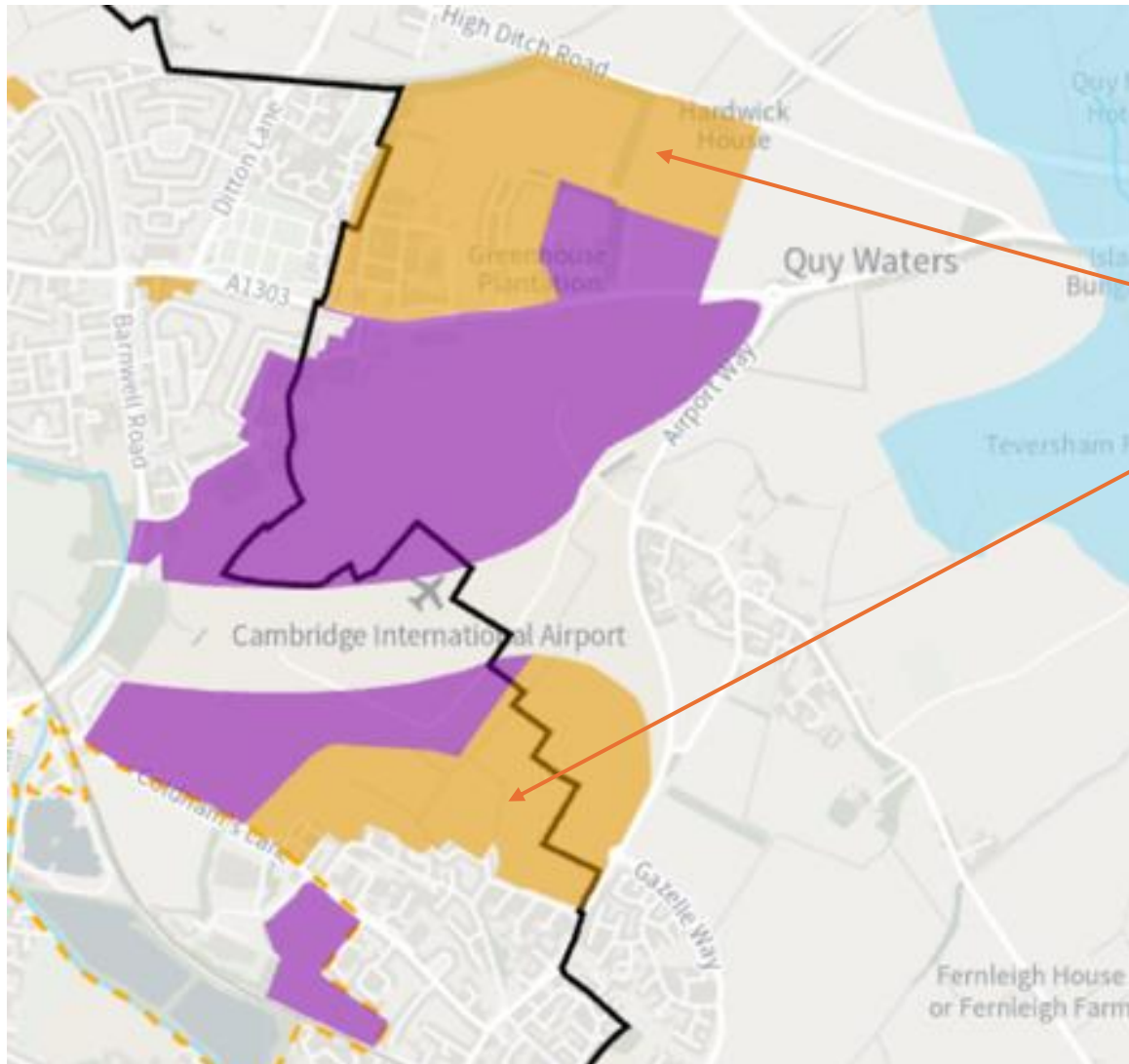
Education and New Developments

9 July 2024

Will cover

1. Marleigh
2. Springstead
3. Process for opening a new school

Cambridge East – First Proposals, Greater Cambridge Local Plan



| Site | Home s | 4-10s |
|---------------------------------|-----------------|---|
| Marleigh | 1,300 (+268) | Low: 284 High: 418 2FE |
| LNCH | 1,200 | ~280 |
| Addnl. sites to 2041 | 2,900 | Low: 870 High: 1,160 4.1-5.5FE |
| Addnl. sites post 2041 | 1,600 | Low: 480 High: 640 2.3-3.1FE |
| TOTAL | 7,000 | |

Marleigh

- 1,300 dwellings (+ 268) *currently* scheduled for completion 2029-30.
- Approximately 280-420 4-10 year-olds (known housing mix).
- A new 2FE primary school (420 places) and early years opened in September 2022 and is run by the Anglian Learning Trust.
- Total cost = £10.74M of which £8.6M from S106
- Jan 2024 = 84 pupils on roll with 24 in nursery class

Springstead – Primary

- Development: 1,200 dwellings - *currently* scheduled for completion 2024-2033.
- Approximately 280 4-10 year-olds (known housing mix).
- Rough equivalent of 1.3FE
- Insufficient for DfE 2FE minimum school.

Springstead – Primary

- LNCH s106 enables:
 - The reservation and servicing of a suitable site for a primary school on the development
 - Transfer of land and initial contributions for the primary school at the point when either:
 - 300th dwelling is occupied, or;
 - The point when CCC determines a new (2FE) school will be required, working back from the planned opening date;whichever is the later.
- £7.4m developer contribution to a new primary school (with nursery classes).

Springstead - Primary

- 300th dwelling expected to be completed around 2026-27
- 2 years to design and build the school indicates an opening date of 2028 or 2029
- In the interim there are many surplus places at neighbouring schools such as Bewick Bridge and Teversham

Springstead Secondary

- S106 enables:
 - The reservation and servicing of a suitable site for a secondary school on the development
 - Transfer of land and initial contributions for the primary school at the point when either:
 - 200th dwelling is occupied, or;
 - 60 days after the relevant permission for the Secondary School building or 30 days after the Owner receives the Secondary Site notice from the Council;whichever is the later.
- £3.78m developer contribution to a new secondary school

Opening a New School

1 Free School Programme

- These projects are funded and delivered by the Government
- A secondary free school was approved in Wave 12
- Cambridge City Free School to be run by the Knowledge Schools Trust.
- The school is 600 places (4FE) but with land available to increase to 6FE.
- The project is in pre-opening phase with the opening date still to be confirmed by the DfE.

Opening a New School

2 Free School Presumption

- These projects are funded and delivered by local authorities in response to their sufficiency duty.
- This is likely to be the way that the new primary school comes forward.
- Local authorities are expected to:
 - determine the specification for the new school;
 - lead and fund the capital project;
- DfE makes final decision

Next Steps

- 1. Monitor the child yield from the development**
- 2. Explore options to open a viable primary school**

Questions?