

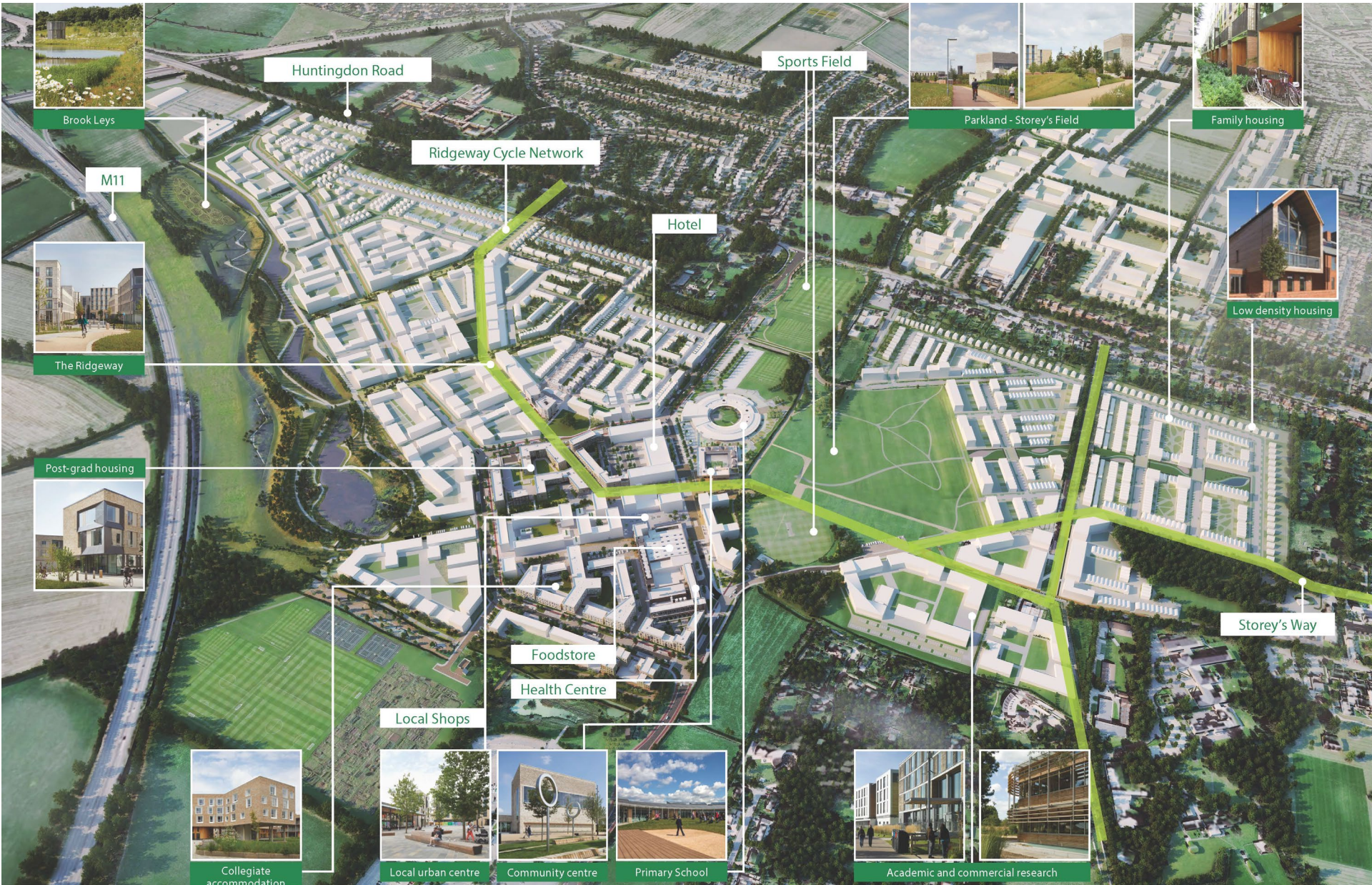
# EDDINGTON

CAMBRIDGE

NW & W Community Forum

Tuesday 13 February 2024





Brook Leys

Huntingdon Road

M11



The Ridgeway

Ridgeway Cycle Network

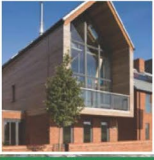
Hotel



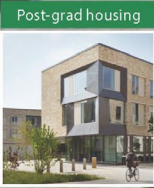
Parkland - Storey's Field



Family housing



Low density housing



Post-grad housing

Foodstore

Health Centre

Local Shops



Collegiate accommodation



Local urban centre



Community centre



Primary School

Sports Field

Storey's Way



Academic and commercial research



Academic and commercial research



## *A sustainable neighbourhood in Cambridge*

Outline planning consent granted in 2013 for:

- 3,000 homes (50% University & College KWH)
- 2,000 post-graduate student bedspaces
- 100,000 sqm research space
- Community facilities and public space

## **Phase 1 :**

- c1,800 dwellings committed
  - 700 KWH
  - 1,100 market homes
- 325 post graduate rooms (Girton College)
- Supermarket and local shops – Sainsbury's, Dulcedo bakery, Argos, Douce hair salon,
- Up to 10 further retail units
- Storey's Field Centre (Stirling Prize Nominee)
- Primary school
- Senior living
- Nursery
- Hotel
- Energy centre
- Open spaces and amenity areas
- Health centre



**Currently consented (green on map)**

**M1/M2 (Hill)**

Market housing 'Knight's Park – under construction / for sale

**M3 (Hill)**

Market housing under construction

**S3 (Hill)**

Market housing nearing completion

**Lot 4 (Hill)**

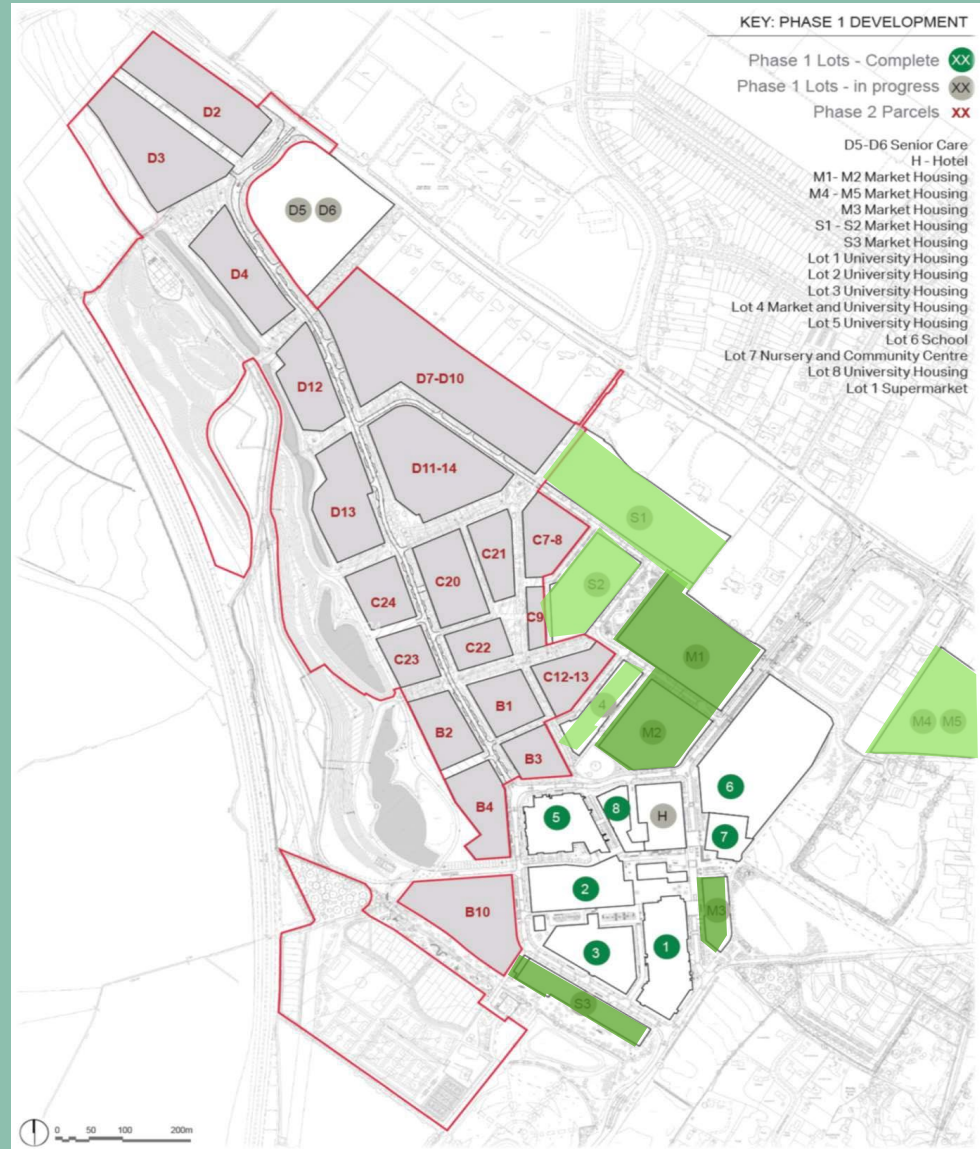
Market housing under construction

**S1/S2 (Present Made) 373 homes**

Mix of apartments and houses as Build-to-Rent  
Under construction

**M4/M5 (Durkan) 160 homes**

Mix of houses and apartments for market sale - Consented





## Construction Activity and Haul Roads

### S1 & S2 Haul Road Works

- Ridgeway crossing point moved





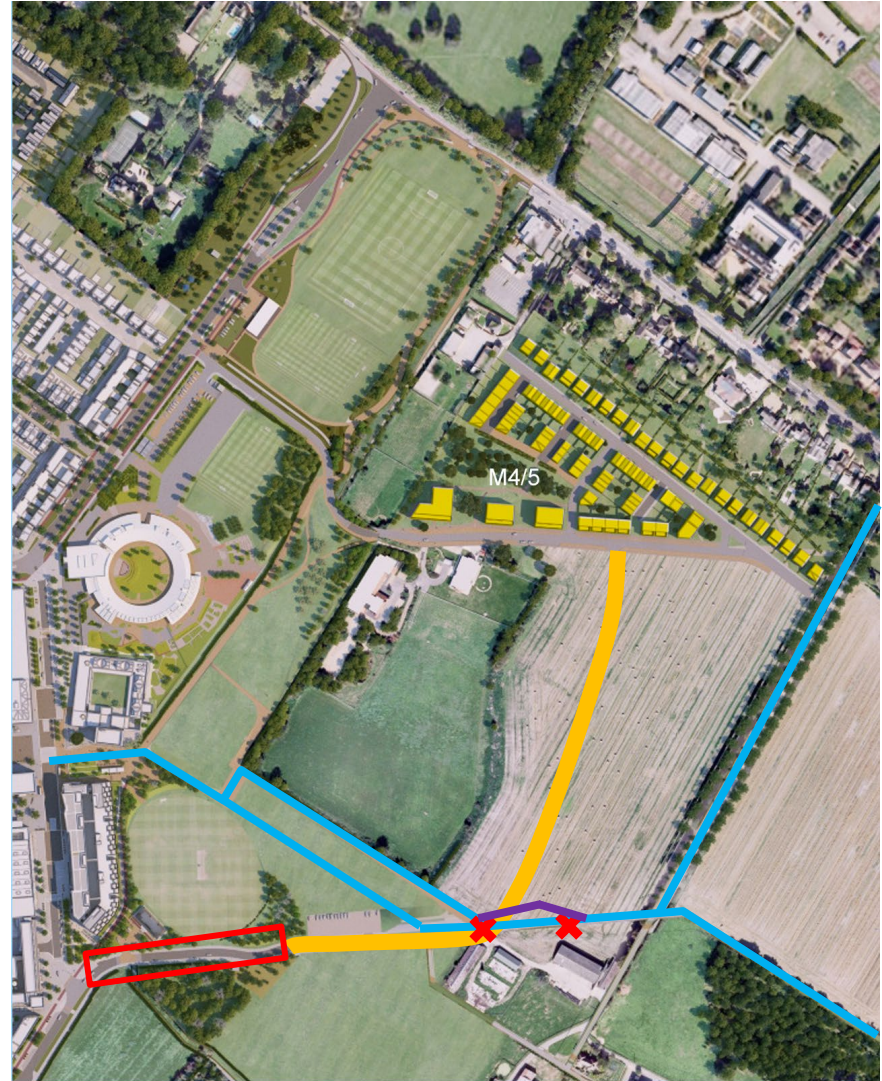




## Construction Activity and Haul Roads

### M4 & M5 Haul Road Works

- On site now
- Ridgeway temporary diversion through end of March
- New permanent manned crossing point for duration of haul road use.







Proposed site layout (ground level)



Type		No.	No. by Beds	% by Beds
Apartments	1B studio	5	43	26.9
	1B2P	38		
	2B3P	1	46	28.8
	2B4P	36		
	2B penthouse	9		
Houses	3B5P	15	38	23.8
	3B6P	23		
	4B7P	10	33	20.6
	4B8P	23		
<b>TOTAL</b>		<b>160</b>	<b>100</b>	

Accommodation schedule





# EDDINGTON

CAMBRIDGE



CAMBRIDGE  
FESTIVAL









[www.eddington-cambridge.co.uk](http://www.eddington-cambridge.co.uk)

Matt Johnson - [matthew.johnson@admin.cam.ac.uk](mailto:matthew.johnson@admin.cam.ac.uk)