

Examples of S106-funded projects in Cambridge (February 2024)



Nightingale
Pavilion (Queen
Edith's ward)



cambridge.gov.uk facebook.com/camcitco twitter.com/camcitco

1

Every ward in Cambridge has benefitted from S106-funded projects, which help to mitigate the impact of development. Here are some examples, presented by current [ward](#) (in alphabetical order).

In most cases, the number and size of mitigation projects in a ward tends to reflect the scale of development in that part of the city for which relevant S106 funds have been secured.

S106 spend figures are rounded and 'year' of completion is approximate. More photos will be added soon.

Last updated: February 2024

www.cambridge.gov.uk/developer-contributions



cambridge.gov.uk facebook.com/camcitco twitter.com/camcitco

2

Examples of S106-funded completed projects

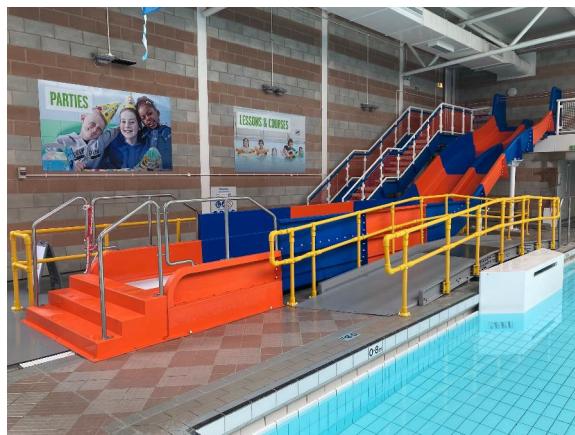
Abbey ward (East Area)

Project	S106 £	Year
Abbey Pool: swimming hall improvements	£212,000	2022/23
Abbey Sports Centre kettle bells fit kit	£20,000	2022/23
Abbey People’s Chalk Dreams public art	£20,000	2022/23
Thorpe Way Rec Ground: new footpath	£12,000	2022/23
Abbey Sports: outdoor pitch floodlighting	£65,000	2018/19
Abbey Sports Centre outdoor fit kit	£41,000	2018/19
Museum of Technology meeting space	£31,000	2018/19
Ditton Fields play area improvements	£39,000	2017/18



cambridge.gov.uk facebook.com/camcitco twitter.com/camcitco

3



Abbey Pool swimming pool improvements (2022/23)

Abbey ward (East Area)

S106 funding: £202,000



cambridge.gov.uk facebook.com/camcitco twitter.com/camcitco

4



Photo credit: Cambridge Curiosity and Imagination

Grant to Abbey People for Chalk Dreams public art (2022/23)
 Abbey ward (East Area)
 S106 funding: £20,000

cambridge.gov.uk facebook.com/camcitco twitter.com/camcitco



5



Abbey Sports Centre outdoor gym equipment (2018/19), plus kettle bells fit kit (2022/23)
 Abbey ward (East Area)
 S106 funding: £41,000, plus £20,000

cambridge.gov.uk facebook.com/camcitco twitter.com/camcitco



6



Stanesfield Road scout hut (2014/15)

Abbey ward (East Area)

S106 funding: £100,000 grant



cambridge.gov.uk facebook.com/camcitco twitter.com/camcitco

7

Examples of S106-funded completed projects

Arbury ward (North Area)

Project	S106 £	Year
Akeman Community Centre: furnishings & equipment for meeting rooms/kitchen/garden	£71,000	2022/23
Arbury Court play area improvements	£31,000	2021/22
Bateson Rd green/play area improvements*	£54,000	2016/17
St Luke's community facility improvements	£30,000	2015/16
Perse Way flats play area improvements	£24,000	2015/16

For improvements to Arbury Community Centre, see list of S106-funded projects for King's Hedges.

* denotes that this project was in a different ward prior to the 2021 ward boundary changes.



cambridge.gov.uk facebook.com/camcitco twitter.com/camcitco

8



Photo Credit: Cambridge Investment Partnership

Akeman Community Centre: furnishings & equipment for meeting rooms, kitchen and garden (2022/23)
 Arbury ward (North Area)
 S106 funding: £71,000

cambridge.gov.uk facebook.com/camcitco twitter.com/camcitco



9



Arbury Court play area (2021/22)
 Arbury ward (North Area)
 S106 funding: £31,000

cambridge.gov.uk facebook.com/camcitco twitter.com/camcitco



10



Bateson Road Green landscaping and play area improvements (2016/17)

Arbury ward (North Area)

S106 funding: £54,000



cambridge.gov.uk facebook.com/camcitco twitter.com/camcitco

11



St Luke's Church community meeting space and kitchen improvements (2015/16)

Arbury ward (North Area)

S106 funding: £30,000 grant



cambridge.gov.uk facebook.com/camcitco twitter.com/camcitco

12

Examples of S106-funded completed projects

Castle ward (West/Central Area)

Project	S106 £	Year
Histon Road Rec football area improvements	£33,000	2018/19
Eddington flag parade public art grant	£25,000	2018/19
Histon Road Rec improved play area surface	£35,000	2017/18
Histon Road Rec entrances & public art	£69,000	2016/17
Shelly Row play area improvements	£50,000	2016/17
St Augustine's hall improvements – phase 2	£87,000	2015/16
Histon Road Rec play area/open spaces	£48,000	2015/16
St Augustine's hall improvements – phase 1	£100,000	2014/15



cambridge.gov.uk facebook.com/camcitco twitter.com/camcitco

13



Histon Road Rec Ground football area (2018/19)

Castle ward (West/Central Area)

S106 funding: £33,000



cambridge.gov.uk facebook.com/camcitco twitter.com/camcitco

14



Histon Road Rec Ground public art and entrance improvements (2016/17)
 Castle ward (West/Central Area)
 S106 funding: £69,000 grant

cambridge.gov.uk facebook.com/camcitco twitter.com/camcitco



15




St Augustine's church hall improvements: phase 1 (2014/15) and phase 2 (2015/16)
 Castle ward (West/Central Area)
 S106 funding: £187,000 grant

cambridge.gov.uk facebook.com/camcitco twitter.com/camcitco



16

Examples of S106-funded completed projects

Cherry Hinton ward (South Area)

Project	S106 £	Year
Cherry Hinton Hall play area improvements	£150,000	2021/22
Cherry Hinton Hall grounds improvements (2)	£400,000	2019/20
Tenby Close play area improvements	£55,000	2018/19
Cherry Hinton Rec pavilion improvements	£300,000	2016/17
Reilly Way play area improvements	£34,000	2016/17
Cherry Hinton Baptist Church family centre	£101,000	2015/16
Cherry Hinton Rec Ground improvements	£141,000	2014/15
Cherry Hinton Hall grounds improvements (1)	£75,000	2012/13

Under way: Cherry Hinton Community Hub, including £225k of S106 funding



cambridge.gov.uk facebook.com/camcitco twitter.com/camcitco

17



Cherry Hinton Hall play area improvements (2021/22)

Cherry Hinton ward (South Area)
S106 funding: £150,000



cambridge.gov.uk facebook.com/camcitco twitter.com/camcitco

18



**Improvements to Family Centre at
Cherry Hinton Baptist Church (2015/16)**
Cherry Hinton ward (South Area)
S106 funding: £101,000k (part of £121k grant)



cambridge.gov.uk facebook.com/camcitco twitter.com/camcitco

19



**Cherry Hinton Rec Ground improvements
(including new skate park, play equipment
and panna football goals) (2014/15)**
Cherry Hinton ward (South Area)
S106 funding: £143,000



cambridge.gov.uk facebook.com/camcitco twitter.com/camcitco

20

Examples of S106-funded completed projects

Coleridge ward (East Area)

Project	S106 £	Year
Tree planting in Coleridge open spaces	£15,000	2022/23
Robert May play area improvements	£39,000	2021/22
Greek Orthodox church hall refurbishment	£150,000	2018/19
Lichfield Road play area improvements	£49,000	2018/19
'News, news, news' public art (The Junction)	£15,000	2018/19
'Rhyme, Rhythm & Railways' public art	£15,000	2017/18
Coleridge Rec Ground improvements	£321,000	2015/16
Flamsteed Road scout hut	£120,000	2013/14

Coming later this year: Coleridge Rec outdoor fit kit (£70,000)



cambridge.gov.uk facebook.com/camcitco twitter.com/camcitco

21



Robert May Close play area (2021/22)

Coleridge ward (East Area)

S106 funding: £39,000



cambridge.gov.uk facebook.com/camcitco twitter.com/camcitco

22



**Greek Orthodox Church: hall improvements
Cherry Hinton Road (2018/19)**
Close to Coleridge/Queen Edith's boundary
S106 funding: £150,000 grant

cambridge.gov.uk facebook.com/camcitco twitter.com/camcitco



23



**Coleridge Rec Ground improvements
including new play equipment, tennis courts
and multi-use games area (2015/16)**
Coleridge ward (East Area)
S106 funding: £321,000

cambridge.gov.uk facebook.com/camcitco twitter.com/camcitco



24

Examples of S106-funded completed projects

East Chesterton ward (North Area)

Project	S106 £	Year
Chesterton Rec Ground pavilion	£338,000	2022/23
Chesterton Rec Ground wheel-sports park	£93,000	2022/23
St George's community kitchen & toilet	£14,500	2022/23
Methodist church hall improved access/toilets	£15,000	2020/21
Brownsfield Centre: kitchen improvements	£15,000	2019/20
Bramblefields nature reserve improvements	£9,500	2018/19
Camrowers community boathouse	£250,000	2016/17
Installation of equipment at 3 play areas	£38,000	2016/17



cambridge.gov.uk facebook.com/camcitco twitter.com/camcitco

25



Chesterton Pavilion (2022/23)
 East Chesterton ward (North Area)
 S106 funding: £338,000



cambridge.gov.uk facebook.com/camcitco twitter.com/camcitco

26



Chesterton Rec Ground wheelsports area (2022/23)
 East Chesterton ward (North Area)
 S106 funding: £93,000

cambridge.gov.uk facebook.com/camcitco twitter.com/camcitco



27



Grants to Camrowers and CRA towards new community boathouse, Logan's Way (2016/17)
 East Chesterton ward (North Area)
 S106 funding: £250,000 grant

cambridge.gov.uk facebook.com/camcitco twitter.com/camcitco



28

Examples of S106-funded completed projects

King's Hedges ward (North Area)

Project	S106 £	Year
Towards Campkin Road affordable housing❖	£1.75m	2020/21
North Cambridge Academy tennis courts	£125,000	2018/19
Arbury Community Centre large hall refurb	£50,000	2018/19
Nun's Way Rec mini-climbing dome	£20,000	2017/18
Cambridge Gymnastics Academy warehouse conversion and trampoline pit	£140,000	2015/16
Nun's Way skate park	£63,500	2014/15
Arbury Community Centre small hall refurb	£80,000	2013/14

❖ denotes strategic S106 funds for affordable housing in Cambridge



cambridge.gov.uk facebook.com/camcitco twitter.com/camcitco

29



Cambridge Gymnastics Academy warehouse conversion and trampoline pit (2015/16)

King's Hedges ward (North Area)

S106 funding: £65,000 & £75,000 grants



cambridge.gov.uk facebook.com/camcitco twitter.com/camcitco

30



Nun's Way skate park (2014/15)
 King's Hedges ward (North Area)
 S106 funding: £63,500

cambridge.gov.uk facebook.com/camcitco twitter.com/camcitco




31

Examples of S106-funded completed projects

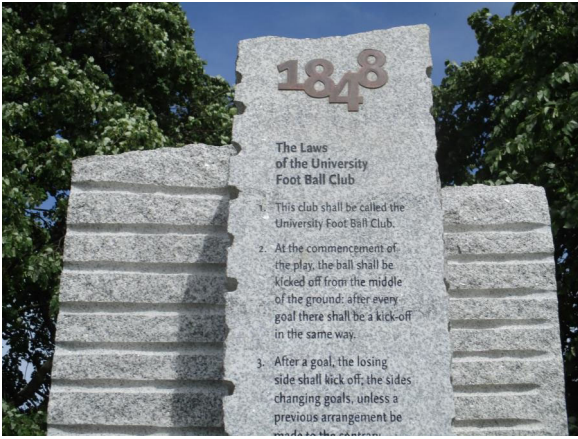
Market ward (West/Central Area)

Project	S106 £	Year
Jesus Green Lido: LED floodlighting	£36,000	2023/24
Jesus Green: more seating, benches & trees	£14,500	2022/23
Parker's Piece tree-planting (extra funding)	£9,900	2021/22
Parker's Piece grass reinforcement by paths	£78,500	2019/20
St Clement's meeting space improved access	£30,000	2019/20
Jesus Green wildflower meadow	£12,000	2019/20
Christ's Pieces play area improvements	£13,500	2017/18
Christ's Pieces tennis court improvements	£66,000	2016/17
Jesus Green drainage improvements	£100,000	2014/15

cambridge.gov.uk facebook.com/camcitco twitter.com/camcitco




32



**'Cambridge Rules' public art (2018/19)
(on Parker's Piece)**

Market ward (West/Central Area)
S106 funding: £115,000 (city-wide project)



cambridge.gov.uk facebook.com/camcitco twitter.com/camcitco

33



**Christ's Pieces
tennis court improvements (2016/17)**

Market ward (West/Central Area)
S106 funding: £75,000



cambridge.gov.uk facebook.com/camcitco twitter.com/camcitco

34

Examples of S106-funded completed projects

Newnham ward (West/Central Area)

Project	S106 £	Year
Cambridge Rugby Club floodlights	£45,000	2019/20
Sheep's Green Learner Pool ecology sculpture	£14,000	2019/20
Cambridge University: more hockey pitches	£250,000	2018/19
Cambridge Rugby Club changing facilities	£200,000	2017/18
Lammas Land tennis courts	£39,000	2017/18
Sheep's Green watercourse improvements	£58,000	2016/17
Hodson's Folly improved access	£13,000	2016/17
St Mark's community facility improvements	£150,000	2014/15



cambridge.gov.uk facebook.com/camcitco twitter.com/camcitco

35



Photo credit: www.Englandhockey.co.uk

Cambridge University Sports Centre: additional hockey pitches (2018/19)

Newnham ward (West/Central area)

S106 funding: £250,000 grant



cambridge.gov.uk facebook.com/camcitco twitter.com/camcitco

36



Sheep's Green Learner Pool ecology sculpture (2019/20)
Newnham ward (West/Central area)
S106 funding: £14,000 grant

cambridge.gov.uk facebook.com/camcitco twitter.com/camcitco



37



Sheep's Green watercourse improvements and fish pass (2016/17)
Newnham ward (West/Central area)
S106 funding: £58,000 alongside Environment Agency funding

cambridge.gov.uk facebook.com/camcitco twitter.com/camcitco



38

Examples of S106-funded completed projects

Petersfield ward (East Area)

Project	S106 £	Year
Footbridge over Hobson's Brook at Accordia*	£71,000	2019/20
St Matthew's Piece play area improvements	£35,000	2019/20
Mill Road cemetery footpath improvements	£135,000	2018/19
St Matthew's School performance art	£15,000	2018/19
Bath House play area improvements	£66,000	2016/17
Lutheran Church improved community facility*	£45,000	2016/17
Kelsey Kerridge Sports Centre: changing facilities & health suite	£40,000	2016/17
Accordia scooter park*	£35,000	2015/16

* denotes that this project was in a different ward prior to the 2021 ward boundary changes.



cambridge.gov.uk facebook.com/camcitco twitter.com/camcitco

39



Footbridge over Hobson's Brook at Accordia development (2019/20)

Petersfield ward (East Area)

S106 funding: £71,000



cambridge.gov.uk facebook.com/camcitco twitter.com/camcitco

40



**Mill Road Cemetery
footpath improvements (2018/19)**
Petersfield ward (East Area)
S106 funding: £135,000




cambridge.gov.uk facebook.com/camcitco twitter.com/camcitco

41

Examples of S106-funded completed projects

Romsey ward (East Area)

Project	S106 £	Year
Coldham's Common improved basketball court	£6,700	2023/24
Coldham's Lane play area: benches, bins etc	£9,500	2022/23
Notts Own Scout Hut: improved kitchen & toilet	£40,000	2021/22
Romsey Mill meeting space improvements	£21,000	2021/22
Coldham's Lane play area improvements	£87,500	2018/19
Mill Road Railway workers public art	£66,000	2018/19
C3 community facility improvements	£53,000	2015/16
Ross Street community centre improvements	£70,000	2014/15
St Philip's community centre improvements	£122,000	2012/13



cambridge.gov.uk facebook.com/camcitco twitter.com/camcitco

42



Coldham's Common basketball court improvements (2023/24)
 Romsey ward (East Area)
 S106 funding: £6,700



cambridge.gov.uk facebook.com/camcitco twitter.com/camcitco

43




Notts Own Scout hut: kitchen and toilet improvements (2021/22)
 Romsey ward (East Area)
 S106 funding: £40,000 grant




cambridge.gov.uk facebook.com/camcitco twitter.com/camcitco

44



Cavendish Road public realm improvements and Railway workers public art (2018/19)
 Romsey ward (East Area)
 S106 funding: £35,000 + £66,000

cambridge.gov.uk facebook.com/camcitco twitter.com/camcitco



45


Examples of S106-funded completed projects

Queen Edith's ward (South Area)

Project	S106 £	Year
Nightingale Ave. Rec community garden hut and outside covered kitchen & activity area	£23,000	2022/23 2021/22
Holbrook Road play area improvements	£43,000	2021/22
Nightingale Ave. Rec all-weather footpaths	£27,000	2021/22
Netherhall School gym & studio	£279,500	2019/20
St John's Church hall extension	£100,000	2019/20
Netherhall School dining hall meeting space	£24,000	2019/20
Gunhild Close play area improvements	£55,000	2018/19

Coming soon: Nightingale Avenue Rec Pavilion, including over £600k of S106 funding

cambridge.gov.uk facebook.com/camcitco twitter.com/camcitco



46



Nightingale Avenue Rec Pavilion (2023/24)
 Queen Edith's ward (South Area)
 S106 funding: Over 650,000



cambridge.gov.uk facebook.com/camcitco twitter.com/camcitco

47



Nightingale Ave Rec community garden: meeting hut (2021/22) & outdoor kitchen/activity area (2022/23)
 Queen Edith's ward (South Area)
 S106 funding: £23,000 in total



cambridge.gov.uk facebook.com/camcitco twitter.com/camcitco

48



Holbrook Road play area (2021/22)
Queen Edith's ward (South Area)
S106 funding: £43,000



cambridge.gov.uk facebook.com/camcitco twitter.com/camcitco

49



Nightingale Avenue Rec Ground community green space (2016/17)
Queen Edith's ward (South Area)
S106 funding: £22,000



cambridge.gov.uk facebook.com/camcitco twitter.com/camcitco

50

Examples of S106-funded completed projects

Trumpington ward (South Area)

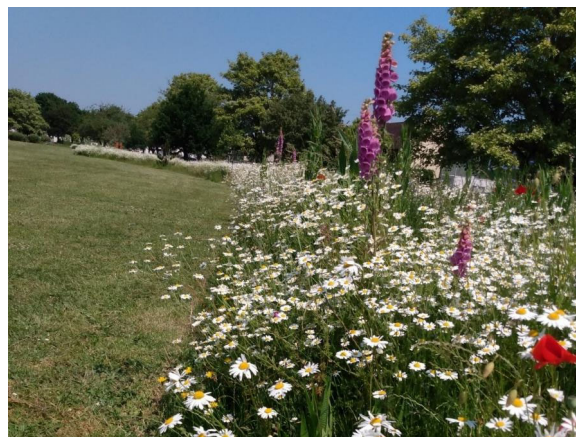
Project	S106 £	Year
Trumpington Rec environmental enhancement	£56,500	2022/23
Bryon's Pool LNR fish pass improvements ◇	£85,000	2021/22
Trumpington Rec wheel-sports park	£80,000	2019/20
Trumpington Rec climbing frame & trim trail	£63,500	2019/20
Clay Farm community centre ◇	£4.07m	2018/19
Southern Connections public art	£94,500	2018/19
'Trumpington Voices' public performances	£19,500	2018/19
Trumpington Bowls pavilion	£72,000	2015/16

◇ denotes that this primarily draws on specific S106 funds from major developments on Cambridge's Southern fringe



cambridge.gov.uk facebook.com/camcitco twitter.com/camcitco

51



Trumpington Rec environmental enhancements (2022/23)

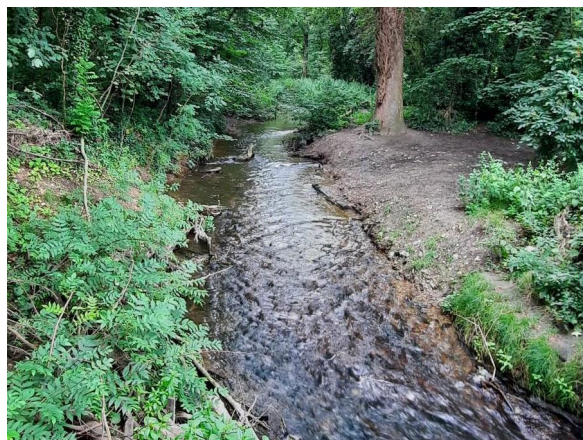
Trumpington ward (South Area)

S106 funding: £56,500



cambridge.gov.uk facebook.com/camcitco twitter.com/camcitco

52



Byron's Pool LNR fish pass pass improvements (2021/22)

Trumpington ward (South Area)

S106 funding: £85,000



cambridge.gov.uk facebook.com/camcitco twitter.com/camcitco

53



Trumpington Rec wheelsports park (2019/20)

Trumpington ward (South Area)

S106 funding: £80,000



cambridge.gov.uk facebook.com/camcitco twitter.com/camcitco

54



Trumpington Rec climbing dome & trim trail (2019/20)
 Trumpington ward (South Area)
 S106 funding: £63,500

cambridge.gov.uk facebook.com/camcitco twitter.com/camcitco



55


Examples of S106-funded completed projects

West Chesterton ward (North Area)

Project	S106 £	Year
Jubilee Gardens open space improvements	£45,500	2022/23
Improvements to benches etc at 2 play areas	£8,500	2022/23
Milton Road library community rooms	£100,000	2019/20
Chesterton Sports Centre artificial/hard courts	£65,000	2019/20
Alexandra Gardens play area/landscaping*	£35,000	2019/20
'Bright Lights of CB4' public art grant	£13,000	2018/19
Rowan Humberstone community facilities	£71,000	2016/17
Chestnut Grove play area improvements	£49,500	2015/16

* denotes that this project was in a different ward prior to the 2021 ward boundary changes.

cambridge.gov.uk facebook.com/camcitco twitter.com/camcitco



56



Jubilee Gardens open space improvements (2022/23)

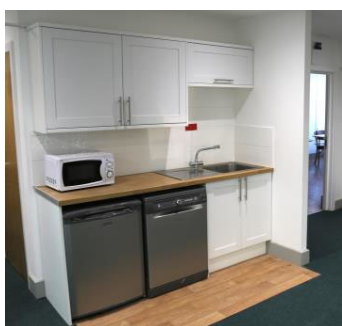
West Chesterton ward (North Area)

S106 funding: £45,500



cambridge.gov.uk facebook.com/camcitco twitter.com/camcitco

57



Rowan Centre community meeting space improvements, Humberstone Road (2016/17)

West Chesterton ward (North Area)

S106 funding: £71,000 grant



cambridge.gov.uk facebook.com/camcitco twitter.com/camcitco

58