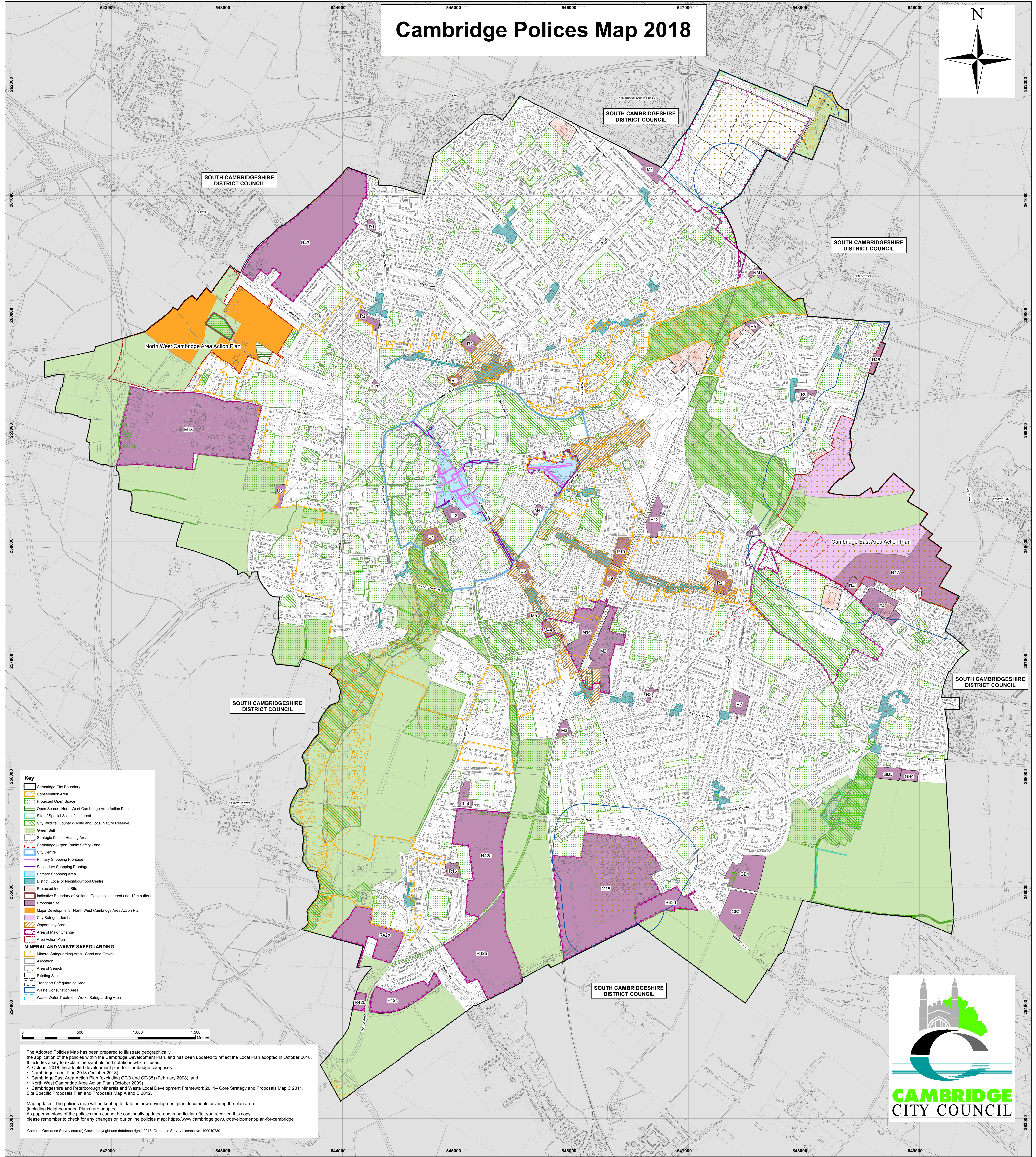
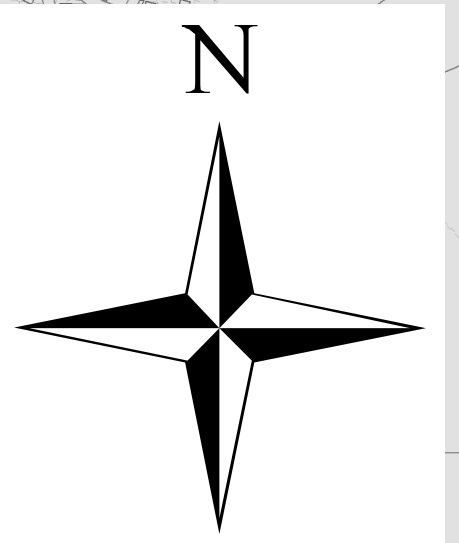


# Cambridge Polices Map 2018



**Key**

- Cambridge City Boundary
- Conservation Area
- Protected Open Space
- Open Space - North West Cambridge Area Action Plan
- Site of Special Scientific Interest
- City Wildlife, County Wildlife and Local Nature Reserve
- Green Belt
- Strategic District Heating Area
- Cambridge Airport Public Safety Zone
- City Centre
- Primary Shopping Frontage
- Secondary Shopping Frontage
- Primary Shopping Area
- District, Local or Neighbourhood Centre
- Protected Industrial Site
- Indicative Boundary of National Geological Interest (inc. 10m buffer)
- Proposed Site
- Major Development - North West Cambridge Area Action Plan
- City Safeguarded Land
- Opportunity Area
- Area of Major Change
- Area Action Plan

**MINERAL AND WASTE SAFEGUARDING**

- Mineral Safeguarding Area - Sand and Gravel
- Accession
- Area of Search
- Existing Site
- Transport Safeguarding Area
- Waste Consultation Area
- Waste Water Treatment Works Safeguarding Area



The Adopted Policies Map has been prepared to illustrate geographically the application of the policies within the Cambridge Development Plan, and has been updated to reflect the Local Plan adopted in October 2018. It includes a key to explain the symbols and notations which it uses.

At October 2018 the adopted development plan for Cambridge comprises:

- Cambridge Local Plan 2018 (October 2018);
- Cambridge East Area Action Plan (excluding CE3 and CE35) (February 2008); and
- North West Cambridge Area Action Plan (October 2009)

Cambridgeshire and Peterborough Minerals and Waste Local Development Framework 2011 - Core Strategy and Proposals Map C 2011, Site Specific Proposals Plan and Proposals Map A and B 2012.

Map updates: The policies map will be kept up to date as new development plan documents covering the plan area (including Neighbourhood Plans) are adopted.

As paper versions of the policies map cannot be continually updated and in particular after you received this copy please remember to check for any changes on our online policies map: <https://www.cambridge.gov.uk/development-plan-for-cambridge>

Contains Ordnance Survey data (© Crown copyright and database rights 2018. Ordnance Survey Licence No. 100019730.

