

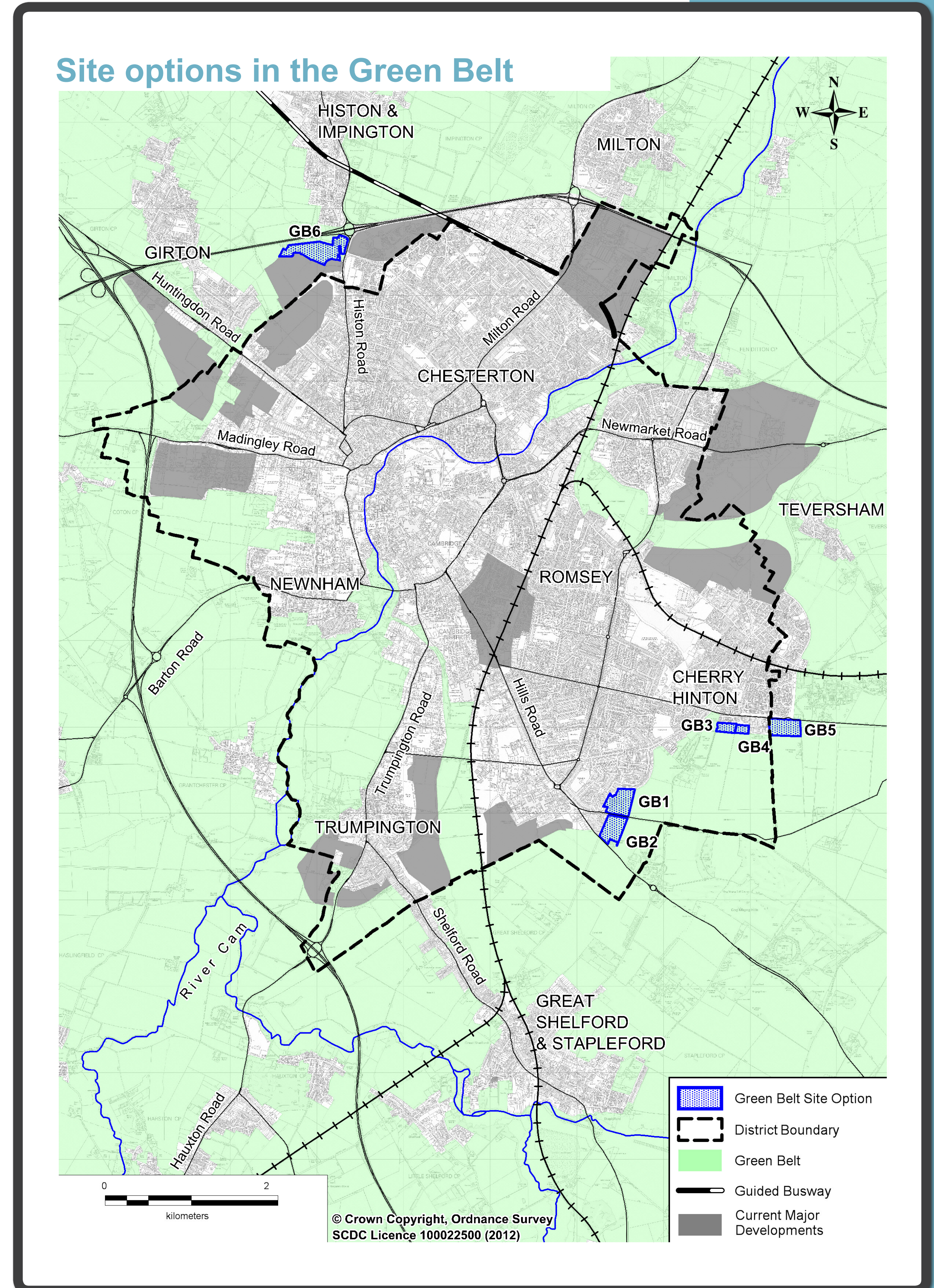
South Cambridgeshire Local Plan

Cambridge Local Plan

Issues and Options 2 Consultation

Green Belt site options

- The 2012 consultation asked your views on ten broad locations in the Green Belt on the edge of Cambridge.
- We've now assessed the Green Belt land to see if there are any areas that are less essential for protecting what is special about Cambridge and could be considered for development. Six site options have been identified for consultation before the Councils decide whether to change the Green Belt and where development should go in both areas in our Local Plans.
- The site options could provide a total of 680 homes.



Site Option GB1: Land North of Worts' Causeway



District: Cambridge
Ward / Parish: Queen Edith's
Area: 7.33ha
Potential Capacity: 250 dwellings

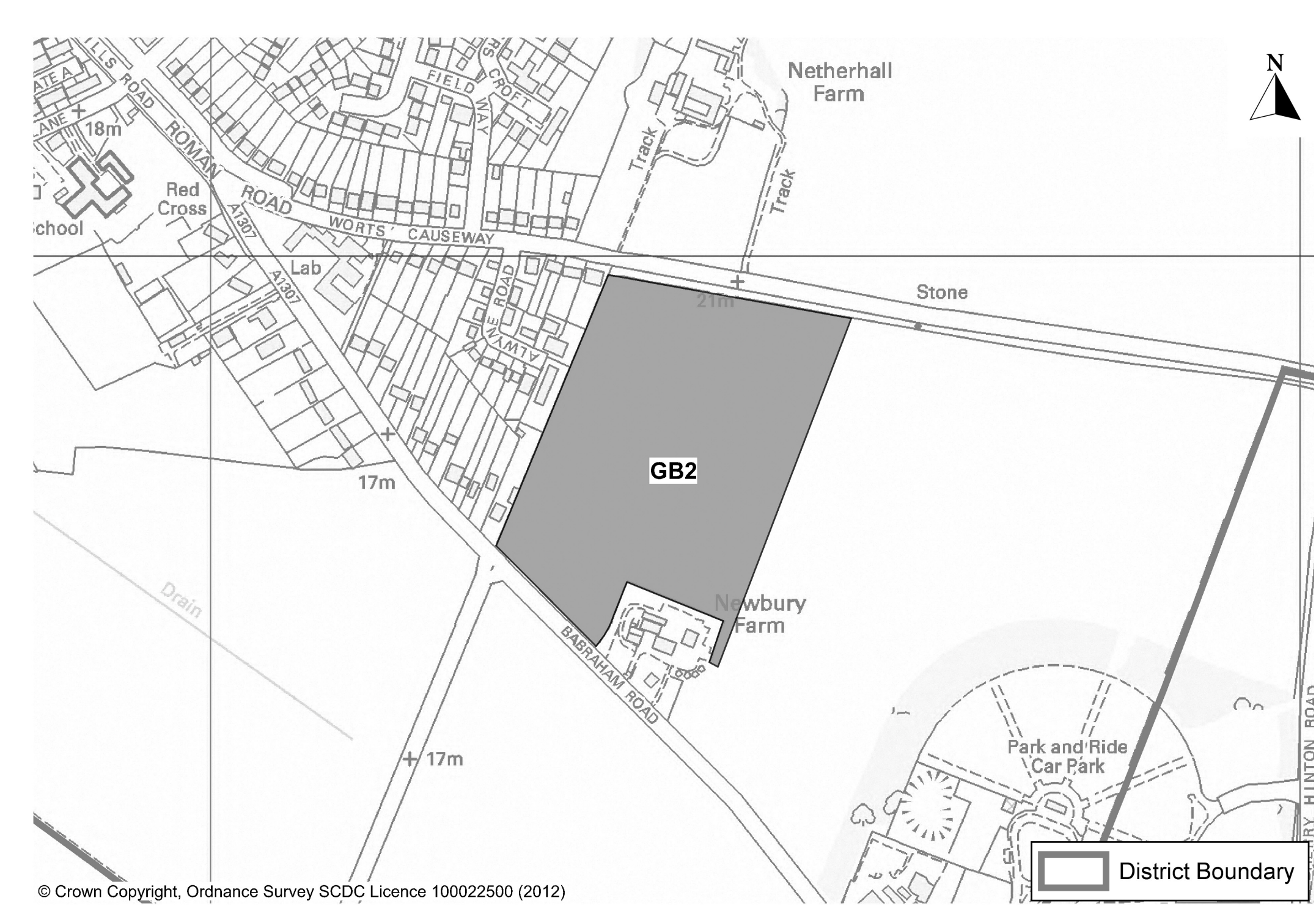
Pros:

- Close to Addenbrooke's H30ospital;
- Highly accessible by public transport and bicycle;
- Limited visual impact if well landscaped;
- Ability to integrate with existing communities.

Cons:

- Minimal Impact on Green Belt purposes;
- Potential adverse impact on Netherhall Farm Meadow County Wildlife site but capable of mitigation;
- Small part of the site may not be available for development.

Site Option GB2: Land South of Worts' Causeway



District: Cambridge
Ward / Parish: Queen Edith's
Area: 6.8ha
Potential Capacity: 230 dwellings

Pros:

- Close to Addenbrooke's Hospital;
- Highly accessible by public transport and bicycle;
- Limited visual impact if well landscaped;
- Ability to integrate with existing communities.

Cons:

- Minimal impact on Green Belt purposes;
- Beyond 800m of local services and facilities;
- Beyond 800m of nearest primary school.

