



COMMUNITY GRANTS

Annual report 2023/2024



Cambridge City Council's Community Grant fund is available to fund voluntary, community and not-for-profit organisations to run projects that will help to **reduce social or economic inequality for Cambridge residents with the most need.**

Activities need to:

- reduce poverty
- improve skills and confidence to help people gain employment
- improve health and wellbeing
- encourage communities to come together and bring about change
- strengthen and grow the city's voluntary sector
- reduce social isolation and loneliness

The Community Grants fund also awards Discretionary Rate Relief (DRR) to voluntary and community groups to reduce their business rate bill. DRR is in addition to the mandatory reliefs that are awarded by government. To be eligible, groups must show that the activities taking place at their premises meet our funding priorities and outcomes. The level of relief awarded is proportionate to the number of beneficiaries that are Cambridge residents.

In 2023/2024, a total of £1,099,704 was awarded:

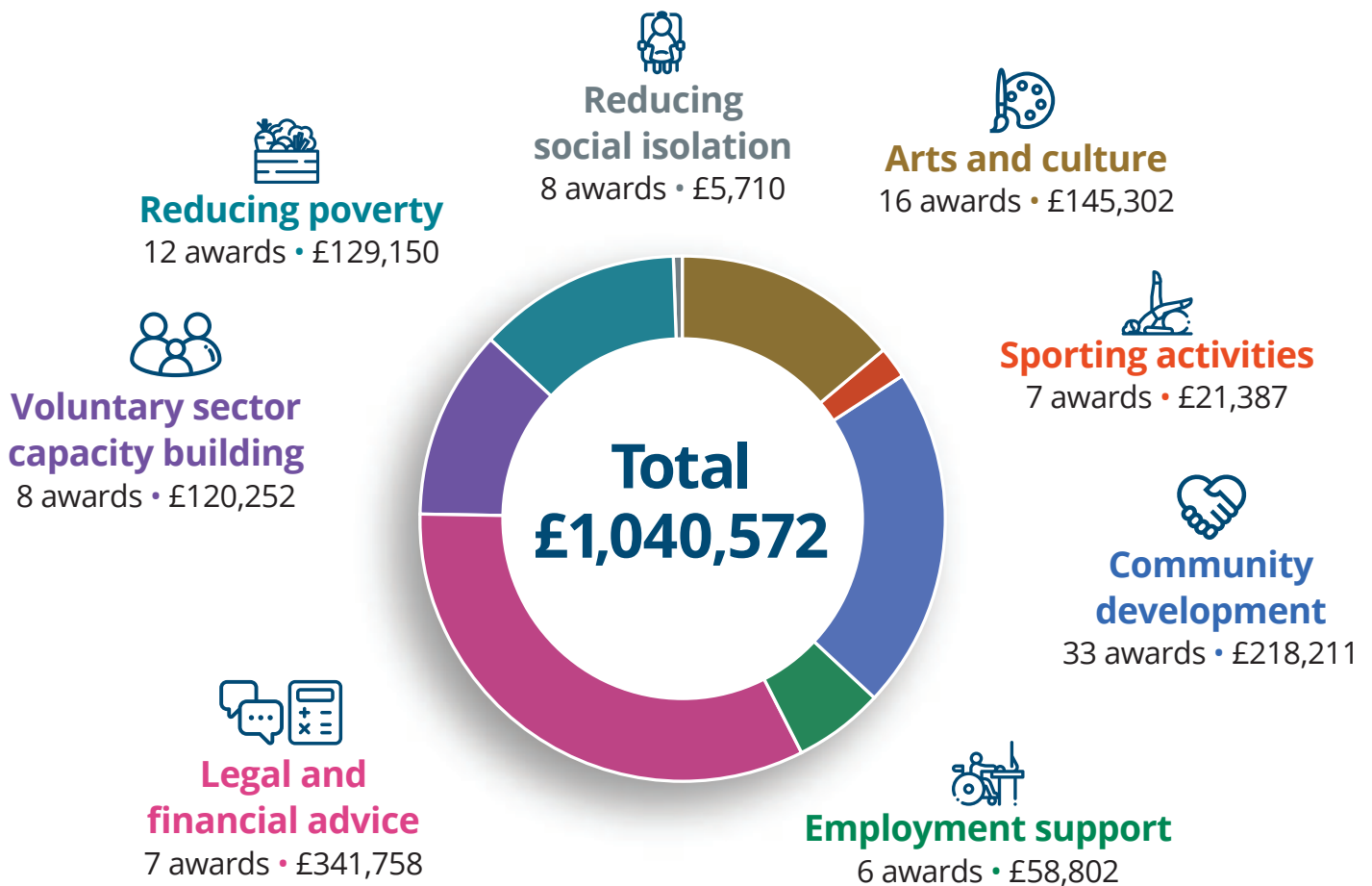
- **£1,040,572** through Community Grants to benefit all parts of Cambridge
- **£59,132** via Area Committee funding for activities in specific neighbourhoods
- **85** groups were funded in total
- **116** activities were delivered

On average every **£1** of grant funding awarded was combined with a further **£4.5** of income raised by the group through additional fundraising, meaning that the total value of grant-funded activities is estimated to have been in excess of **£4.5 million**



Citywide activities were funded as follows:

For a breakdown of Area Committee funding see pages 23 to 26.



With thanks to the **346 trustees** and **2,373 volunteers**, who support the work of the organisations receiving funding





Contents

Arts and cultural activities	5
Sporting activities	8
Community development activities	9
Employment support	14
Legal and financial advice	15
Voluntary sector capacity building	17
Reducing poverty activities	19
Reducing social isolation	22
North Area Committee	23
South Area Committee	24
East Area Committee	25
West Central Area Committee	26

Foreword

I am delighted to present the 2023/2024 Community Grants Annual Report which provides a flavour of some of the amazing activities provided by voluntary and community groups in Cambridge with our funding. Cambridge City Council's discretionary Community Grant fund made over £1 million grant awards to over 80 groups, delivering a huge range of projects from arts and sports activities; projects that reduce social isolation and improve mental health; to initiatives which helped families manage their household budgets and get access to the financial support they needed.

The cost-of-living crisis resulted in huge demand for the services and activities provided by the voluntary and community sector, which groups stepped up to meet, whilst facing their own considerable challenges and uncertainty. The strength of the sector and their commitment to our communities cannot be understated and the city council is proud to work alongside these groups.

Our Community Grants programme is a key element of the council's ambition to tackle

inequality in the city and we strive to ensure the funding gets to the people who need it most. I hope that as you read the report you will recognise the value of the activities our grant funding supports. Funded groups provide significant added value by match funding our awards with the awards of other funders and through the huge number of volunteers that work tirelessly in their communities.

I would like to extend my thanks to all of the voluntary and community groups across the city for their incredible work and I know that together we are making a real difference to our communities.



Cllr Rachel Wade
Executive Councillor for Communities



Funded organisations

- > Arts & Minds
- > Cambridge 105 Radio
- > Cambridge Community Arts
- > Cambridge Film Trust
- > Cambridge Junction
- > Indian Cultural Society
- > Kettle's Yard
- > Museum of Cambridge
- > New International Encounter – NIE Theatre
- > Oblique Arts
- > Rowan Humberstone
- > Strawberry Fair
- > The Pink Festival Group
- > University of Cambridge Museums



SPOTLIGHT ON

Cambridge Community Arts

Creative arts courses for residents experiencing a range of health issues

- **179** city residents attended the courses
- **55%** reported improved mental health
- **58%** felt less isolated
- **40%** plan to take part in further community activities

Funded activities

- > Arts activities for disadvantaged and socially isolated people
- > Arts workshops to support people experiencing mild to moderate levels of depression, anxiety or stress
- > Creative projects for young people with complex needs
- > 'Youth Lab' initiative for disadvantaged young people, outreach, 1:1 youth mentoring sessions and fortnightly workshops
- > Cambridge Pride
- > Strawberry Fair
- > Cultural event to recognise and celebrate diversity and increase community cohesion
- > Creative outreach in areas of high deprivation
- > Film festival, featuring 22 new films produced by young people
- > Activities for at-risk children, young people and families facing barriers to arts engagement
- > Story-telling, writing workshops and performances for children
- > Museum-based interactive and inclusive activities
- > Arts workshops for young adults with a learning disability
- > History project sharing Cambridge Windrush generation stories

“ I feel that Cambridge Community Arts has opened so many doors and opportunities for me now. The course gave me hope that what I would like to do creatively is an achievable possibility ”

Participant



 **SPOTLIGHT ON**

Cambridge Junction

Delivery of three creative engagement projects for young people, including those with complex needs

- Two-day 'Total Arts' Film Festival, featured 22 new films produced by young people with **200+ audience members**
- Feedback from participants at weekly Contemporary Youth Choir (CYC) showed **100%** said they have fun, **75%** are more confident since joining and **100%** feel safe, included and part of something special

“ Before the first Beat Trials & Tribulations project (music and film making project) I probably wouldn't have the confidence to look into jobs and stuff, now I'm scrolling shop websites, finding a phone number and ringing them up. [I've met] people that I've never even seen or knew existed. Now I'm speaking to them ”

Participant

 **SPOTLIGHT ON**

University of Cambridge Museums

Diverse programme of cultural activities including engagement opportunities for those with additional needs

- **8,636** residents engaged in cultural activities that would otherwise have been unaffordable
- **5** disability-friendly openings plus a new Special Educational Needs and Disabilities (SEND) club
- **62** volunteers helped deliver activities

“ It gives my body more life, more get up and go. It keeps my brain and body as active as possible ”

Participant

Feedback from the creative outreach sessions for those living in sheltered housing and care settings showed that:

- **99%** felt 'happy' and 'engaged'
- **98%** felt 'heard'
- **95%** felt 'valued'



SPOTLIGHT ON

Rowan Humberstone

Art, craft, music, drama courses, exhibitions and forest school activities for adults with a learning disability

- **80** students attended **250** creative workshops
- **50** weekly Rowan Rangers forest school sessions

“ The environment at Rowan is very purposeful and ‘C’ feels welcome and ‘at home’. All staff are very respectful and kind to all the students and give lots of encouragement ”

Parent of student



SPOTLIGHT ON

Museum of Cambridge

Events and activities for those with reduced access to arts and cultural activities

- **2,333** participants
- **89** attended ‘Memory Café’ sessions
- **25** storytelling and craft sessions with **560** attendees

‘Museum on a Bike’ programme took collections out to city residents:

- **67%** of participants felt ‘more connected’
- **80%** said they ‘felt happier’



SPOTLIGHT ON

The Pink Festival Group

Free Cambridge Pride festival celebrating the contribution of the LGBTQ+ community to the cultural life of the city

- **13,000** attendees
- **30** partner organisations involved
- **50** advice and information stands
- Youth area created in partnership with The Kite Trust



Funded organisations

- > Cambridge Tea Dance
- > Cambridge United Foundation
- > Chesterton Indoor Bowls Club
- > Kelsey Kerridge Sports Centre
- > Level Water
- > Living Sport
- > Steel Bones

Funded activities

- > Physical activities and 1:1 peer support for amputees
- > Sport programmes for people with complex needs and disabilities
- > Swimming sessions for disabled children
- > Physical activity sessions for families in disadvantaged areas
- > Dance activities for older residents



SPOTLIGHT ON

Cambridge United Foundation

Weekly inclusive physical football sessions for those facing barriers to physical activity

- **95%** felt the activity was positive for their physical wellbeing
- **75%** felt the activity was positive for their personal development
- **81%** felt the activity was positive for their sense of community
- **75%** felt a strong sense of belonging to their local neighbourhood



SPOTLIGHT ON

Steel Bones

Bespoke 1:1 support and peer mentoring to reduce social isolation and improve health outcomes for amputees

“Steel Bones members often say they feel ‘invisible’. They feel they ‘have no power and people do not even notice them.’ Your grant has turned this around in a powerful and tangible way to ensure long lasting progress”

Instructor

“I can wake up in the worst mood ever, but I know if I can get myself to the pitch and be around my team, they motivate me. I know that I am going to have a good time and have good positive people around me”

Participant





Funded organisations

- > Abbey People
- > Age UK
- > Cambridge African Network
- > Cambridge Ethnic Community Forum
- > Cambridge Gateway Club
- > Cambridge Hindu Association
- > Cambridgeshire Older People's Enterprise (COPE)
- > Camsight
- > Cambridgeshire Vietnamese Refugee Community
- > Centre 33
- > CoFarm Foundation
- > Home-Start Cambridgeshire
- > King's Hedges Family Support Project
- > Meadows Children and Family Wing
- > North Cambridge Community Partnership
- > Romsey Mill
- > Student Community Action
- > The Kite Trust
- > The Red Hen Project
- > Trumpington Residents' Association
- > Turkish and Kurdish Speakers' Association

Funded activities

- > Community events and activities bringing people together
- > Creation and management of a community farm, supporting volunteering and distribution of fresh organic food across the city
- > Activities for isolated adults with disabilities
- > Phone-based discussion groups for isolated older residents
- > Bi-monthly newsletter for older people
- > Drop-in support for young people with emotional and practical needs
- > Information, advice and support services for race equality issues
- > Peer support for isolated mums
- > Black History Month celebration event
- > Monthly breakfast club for minority ethnic residents
- > Activity sessions to improve wellbeing
- > Family support programmes and facilitated play for disadvantaged families
- > Long term intensive support for families experiencing complex challenges
- > LGBTQ+ activities and 1:1 support for young people
- > Life and social skills programme for young people with autism
- > Leisure activities and outings for low-income families
- > 'Life After Abuse' support for women recovering from domestic violence
- > Support for young people who are homeless or at risk of homelessness
- > Student-led volunteering programmes



SPOTLIGHT ON

Cambridge Gateway Club

Fortnightly activities, leisure outings and social events for people with a range of disabilities



SPOTLIGHT ON

Abbey People

Community charity improving the lives and wellbeing of Abbey residents through a variety of community projects

- **311** visitors attended **48** community coffee mornings to reduce loneliness
- **38** junior youth club sessions involving **62** young people
- **9** new youth club volunteers recruited
- **3** holiday activities, a trip and **4** family holiday activities delivered
- **100** drop-in sessions offering support and signposting
- **143** food hub sessions with **7,000** visits by **300** families
- **565** food parcels delivered to residents unable to access the food hub
- **116** new users accessed the food hub
- **67** volunteers gave more than **2,073** volunteer hours to the food hub
- **5,265** household contacts made at the food hub, and **4,319** CB5 household visits

“I am a ward councillor. Our work would be much harder without all the work Abbey People do across the board, from helping with consultations and town halls, to holiday food poverty work and the food hub”

Cllr Naomi Bennett



SPOTLIGHT ON

Cambridgeshire Vietnamese Refugee Community

Held a Lunar New Year (Tet) Event, a social and cultural festival for the Vietnamese community

SPOTLIGHT ON

Cambridge Ethnic Community Forum's Race Equality Service

The Race Equality Service aims to reduce inequality and eliminate discrimination through advice, information and support services and collaborative work with partners

- **74** adults and **36** children supported

“This is a good service for people like me who are new to the country. It is very confusing to understand the system, and no service is empathetic to my situation. I have found CECF to be patient and helpful to me”

Client



SPOTLIGHT ON

Home-Start Cambridgeshire

38 peer-support sessions for isolated parents with a child under the age of five

“I feel more confident and happy. I work daily now, and this helps me to pay my bills and nursery for my little son. I was very blessed to know this lovely group and team. They do an amazing job helping mums”

Session attendee



SPOTLIGHT ON

CoFarm Foundation

Community based farming sessions where volunteers learn to grow fresh fruit and vegetables sustainably and manage the community market garden

- **8.7** tonnes of food grown
- **£18,000** of food subsidised/donated for distribution to the network of 8 community food hubs across the city
- **183** sessions
- **499** volunteers contributed **5,052** volunteer hours (valued at **£60,624**)



SPOTLIGHT ON

Centre 33

2,431 young people with social, practical and health needs were supported through the Someone to Talk To drop-in service. The support included:

- financial and budgeting support and online banking safety
- food bank, phone and supermarket vouchers
- signposting to food hubs and community fridges
- skills and education support (CV writing, job and training searching)
- support with transitions in education
- sexual health information and services
- ongoing mental health support and signposting

“Centre 33 is the first place that hasn't let me down”

Service user



 **SPOTLIGHT ON**

Student Community Action

Recruit and train student volunteers to provide social, educational and practical support to vulnerable and disadvantaged residents.

“ Their Big Sib has been amazing, and my child has been transformed, they have so much more confidence and are more willing to try new things. Having them being able to leave the house to have fun has been transformational, and there is talk of them watching a musical with their Big Sib soon ”

Parent

 **SPOTLIGHT ON**

Meadows Children and Family Wing

‘Life After Abuse’ course for women survivors of domestic abuse and their children.

- **250** women and **271** children supported
- **91%** reported increased skills, knowledge and information
- **95%** said the support had better prepared them to cope in life
- **98%** reported receiving new resources that have improved their lives
- **100%** felt better informed and able to access further support
- **99%** accessed new services and community activities
- **98%** reported the support led to improvements in their family lives



“ Thank you to all the support workers and funders. You all have literally given me a new chance at life, when I had just given up and felt that my life had been a waste, and could never get better ”

Course participant

SPOTLIGHT ON

King's Hedges Family Support Project

Drop-in sessions providing support, advice and signposting on a range of financial, parenting and relationship issues

- **500** families supported via 150 sessions
- **23%** were single-parent households
- **23%** reported no support from their wider family
- **69%** received Universal Credit
- **86%** have increased confidence in parenting
- **89%** have made new friends
- **89%** feel happier about themselves

SPOTLIGHT ON

The Kite Trust

Information, support and group sessions for LGBTQ+ young people

- **193** individual support sessions
- **129** young people attended weekly youth groups for 13 to 17 and 18 to 30 year-olds
- Fortnightly online groups for trans young people
- Fortnightly online group for disabled/neurodiverse young people
- **49** young people attended **4** residential activities

“The Kite Trust is a ray of kindness in a dark world”

Attendee





Funded organisations

- > Allia
- > Cambridge Women's Resources Centre
- > Romsey Mill

Funded activities

- > Support for social enterprises
- > Employability and wellbeing workshops, courses and groups for women
- > Targeted accessible courses for young parents up to age 21



SPOTLIGHT ON

Allia

Support provided to new and existing social enterprises through workshops, networking and 1:1 business advisor support

- **87%** of participants said they have clear next steps for growth
- **70%** reported that the programme had increased their productivity
- **94%** said the programme increased their confidence
- **88%** reported that the programme introduced them to useful contacts

“Allia’s ‘Start Your Business Programme’ gave me the tools and the courage I needed to get going, and the structure and networks to keep going. Setting up a business is really hard, but with Allia’s support I feel so much more confident. I can do it!”

Course participant



SPOTLIGHT ON

Cambridge Women's Resources Centre

Women's community space supporting **214** city residents with health and wellbeing and poverty issues, domestic abuse and homelessness

- **90%** feel better informed about the support options available
- **80%** feel better able to cope with everyday life
- **85%** have improved wellbeing
- **75%** feel safer



SPOTLIGHT ON

Romsey Mill

Delivered **3** targeted accessible courses for young parents up to the age of 21

“I don't have an oven so it was good to learn how much I can cook on a hob”

Course participant





Funded organisations

- > Cambridge and District Citizens Advice
- > Cambridge Ethnic Community Forum
- > Cambridge Money Advice Centre
- > Disability Huntingdonshire

Funded activities

- > Free, legal, specialist debt and money advice, partnership work, training, campaigns, initiatives, debt and income maximisation service
- > Specialist welfare rights casework
- > Financial capability information and support
- > Free advice and advocacy for people from ethnic minority backgrounds, including refugees
- > Cambridgeshire Human Rights and Equality Support Service (CHESS)
- > Specialist caseworker support for disabled people accessing disability-related welfare benefits

- **2,306** people were supported to claim Personal Independence Payments (PIP), securing **£1,513,352** of income
- **815** issues addressed via webchat service
- Outreach and community events delivered across the city
- 'Trusted Partner' service introduced to ensure clients get the best support possible
- **2,150** residents supported to learn how to better manage their money, maximise income and budget more effectively

“I have been very stressed and unable to pull my thoughts together to get things done. Everything seemed impossible. You made it seem so simple. I cannot thank you enough”

Client



SPOTLIGHT ON

Cambridge and District Citizens Advice

Free, independent advice for people about their rights and responsibilities

- **18,340** residents accessed free legal and specialist debt and money advice, addressing **21,451** issues
- **£3,550,785** income was gained, and **£733,128** worth of debt was written off
- **825** clients accessed the specialist welfare rights casework service



SPOTLIGHT ON

Cambridge Money Advice Centre

Free, confidential 1:1 debt-management advice and support

- **55** clients supported
- **80%** took action to address debt
- **6** took action to make debt repayments
- **16** entered informal payment plans with creditors
- **6** prepared to secure a Debt Relief Order
- **8** had a Debt Relief Order in place (releasing them from **£174,297** of debt)
- **£59,000** of debts repaid



SPOTLIGHT ON

Cambridge Ethnic Community Forum's Cambridgeshire Human Rights and Equality Support Service (CHESS)

“ I felt alone and very scared that they will sack me but since CHESS contacted them on my behalf, their attitudes have changed. I am no more afraid and do sleep at night because I know I will not be sacked. I have CHESS who know the law behind me ”

Client

“ It's so nice to be debt free. It wasn't just financial help, many times I felt in a very dark place, and they helped me emotionally too ”

Client

Voluntary sector capacity building

8 awards
£120,252



Funded organisations

- > Arbury Community Association
- > Cambridge Council for Voluntary Service
- > Cambridge Ethnic Community Forum

Funded activities

- > Support for groups to set up, run and sustain services
- > Capacity building service for communities from ethnic minority backgrounds
- > Increasing volunteer recruitment
- > Capacity building in the voluntary sector
- > Promoting good practice and improving volunteer experience
- > Networking meetings to support groups to access information, advice and guidance around education and training



SPOTLIGHT ON Cambridge Ethnic Community Forum

Capacity building service for black and minoritised ethnic community groups through provision of information, representation, organisational development and engagement

- 13 groups supported through 29 in-person and online sessions

“Always helpful and always a first call for help”

Training session attendee

“It was a good event meeting new people and communities”

Workshop attendee





SPOTLIGHT ON

Cambridge Council for Voluntary Service

Provide services to ensure individuals and groups are better able to set up, run and sustain their voluntary organisations

- **570** organisations supported with general 1:1 advice, representing at least **500** hours of support
- **75** instances of providing 1:1 advice on income generation
- **99** instances of providing 1:1 advice on starting up new groups
- **912** bookings on **55** training and support events
- **265** bookings for **16** individual online networks
- **3** on demand training modules launched
- **4** volunteering courses, **1** online 'Volunteers Fair' and **4** Managing Volunteers Network meetings delivered

- **75** residents supported to volunteer via 1:1 interviews
- **173** instances of providing advice about volunteering delivered
- **71,257** website visits
- **12** newsletters delivered to **1,293** subscribers
- **23** best practice blogs published
- **4** network events and **1** digital conference delivered to share information and best practice around digital inclusion

“The training was a really important confidence boost and a good reminder of best practice. It gave me the chance to evaluate my methods and to share experiences with others”

Course participant

Reducing poverty activities

12 awards
£129,150



Funded organisations

- > Cambridge Housing Society
- > Cambridge Online
- > Cambridge Re-use
- > Cambridge Sustainable Food
- > North Cambridge Community Partnership
- > Tempo Time Credits
- > The Red Hen Project
- > UK Chinese Women Connect Association



SPOTLIGHT ON

Cambridge Housing Society's Corona Community project

Social, leisure and creative activities and 1:1 support for vulnerable women in supported housing

- **16** women engaged in an allotment project
- **24** received support for mental and physical health issues
- **12** received help with finance and benefits
- **3** women engaged via the Streets to Homes partnership



“Specialised support like this, with highly trained staff who know exactly how to operate, is extremely rare”

Participant

Funded activities

- > 'New Horizons' coach: financial, digital and employment support for young city residents
- > Creative, leisure and sports activities for vulnerable women
- > Digital inclusion projects
- > Support for low-income households to purchase furniture and household items
- > Continued support for Cambridge Food Poverty Alliance
- > Holiday lunch programme for school-age children in low-income families
- > Cookery lessons for low-income residents
- > Time credits to support community engagement and capacity building
- > Emergency care packs for families experiencing financial hardship
- > Information and advice sessions for isolated women



SPOTLIGHT ON

The UK Chinese Women Connect Association

Bi-monthly information, employment advice and networking sessions for Chinese women



SPOTLIGHT ON

Cambridge Sustainable Food

Holiday lunch programme to combat holiday hunger for low-income families

- **36** holiday lunch events held
- **1,021** lunches provided across the city
- **914** additional meals provided by other providers
- **2,092** individual visits to holiday lunch events
- **377** volunteer hours supported the holiday lunch programme

“We were hungry and we were all together”

Parent

“Lovely lunch the children would not normally try. They loved it!”

Parent

SPOTLIGHT ON

Cambridge Online

Provide digital skills training, equipment and online access for digitally excluded people

- **514** individuals supported
- **102** individuals received support to improve their employment prospects
- **155** individuals accessed informal online learning

“The Cambridge Online team are really helpful and understanding. I have learned how to use a computer. Staff have been really helpful and kind, making a very hard job of filling in forms online easier and simpler. I hope to learn more about using different programmes in the future”

Attendee



SPOTLIGHT ON

Cambridge Sustainable Food

Alleviating food poverty in the city through the Cambridge Food Poverty Alliance's food poverty action plan, to coordinate and facilitate a city-wide emergency food response for those in need

- **25,029** food hub visits
- **169** tonnes of food from Cambridge Sustainable Food and food hubs redistributed
- **482** individuals volunteered **14,562** hours
- **952** Christmas hampers distributed, containing festive treats provided by the Foodbank plus seasonal fresh fruit and vegetables for **591** households
- **917** food parcels provided to **57** households containing **109** people
- **67%** agreed 'Money is tight this week and this food helps me get to the end of the week'
- **53%** agreed 'I feel I don't need to worry so much about food for me and my household'

- **54%** agreed 'I feel I can cope better with issues I am facing'
- **64%** agreed 'I feel more supported and know I can ask for help'

SPOTLIGHT ON

The Red Hen Project

300 individuals in north Cambridge received poverty relief assistance.

A survey of families found that as a result of the support provided

- **100%** have better access to resources (like food and help with bills) that they need to get by
- **97%** feel more able to find and get support for them and their family
- **89%** have more links in their community and/or feel less isolated

“It's brought my family together more and I've got more confidence with going out and dealing with things”

Service user



Reducing social isolation

8 awards
£5,710



Funded organisations

- > Arbury Road Baptist Church
- > Boishakhi Cultural Association
- > Cambridge Artworks
- > Cambridgeshire Older People's Enterprise
- > Mallu Café
- > The African Caribbean Research Group
- > The Khidmat Sisters

Funded activities

- > Weekly craft café
- > Day trip and activities for families of the Bangladeshi community
- > Arts activities to promote Black history and creativity
- > Online discussion sessions for socially isolated older adults
- > Monthly social meetings for the Kerala community
- > Social meetings and dominoes club for the Cambridge Caribbean diaspora
- > Coach trip for isolated minoritised women and their families



SPOTLIGHT ON

The African Caribbean Research Group

48 weekly get-togethers of the Cambridge Caribbean Dominoes Club, a cultural and social provision for residents of Caribbean heritage



SPOTLIGHT ON

Cambridge Artworks

The 'Black Creatives' pilot project to support the development of arts participation for the black community



SPOTLIGHT ON

Cambridgeshire Older People's Enterprise (COPE)

Online informative talks and discussions for isolated and lonely older adults





Funded organisations

- > Arbury Carnival Committee
- > Bermuda Community Room
- > Cambridge Science Centre
- > Cambridgeshire Older People's Enterprise
- > Friends of Histon Road Cemetery
- > King's Hedges Brownies
- > Meadows Children and Family Wing
- > Romsey Mill
- > St George's Church (Hope Fairbite, East Chesterton)
- > The Red Hen Project

Funded activities

- > Arbury Carnival
- > Weekly afternoon teas and suppers for low-income residents
- > Science, technology, engineering and mathematics (STEM) club for primary school aged children
- > Monthly older people's club
- > Volunteer maintenance of open green spaces
- > Day trips for disadvantaged children
- > Low-cost cooking sessions
- > Music creation and production sessions for disadvantaged young people
- > Weekly food club/social supermarket for low-income families



SPOTLIGHT ON

The Red Hen Project

Social and leisure opportunities provided via **3** summer trips for disadvantaged families.

“I feel good knowing I could give my son the opportunity of a good day out”

Parent



SPOTLIGHT ON

St George's Church (Hope Fairbite, East Chesterton)

Weekly food club/social supermarket for low-income families and free pop-up café, with signposting for debt advice and budgeting advice

- **80** families (**116** individuals) supported via the food club



SPOTLIGHT ON

Romsey Mill

38 weekly music creation, studio engineering and production sessions for disadvantaged young people aged 14 to 21

- **31** music sessions attended by **25** young people
- **9** music recording studio sessions, **9** video production sessions and **14** music studio engineering sessions
- **17** studio music sessions for girls





Funded organisations

- > Cambridgeshire Older People's Enterprise
- > Cherry Hinton Residents' Association
- > Denis Wilson Court Social Club
- > Oblique Arts
- > Romsey Mill
- > Trumpington Community Drama Group
- > Trumpington Residents' Association

Funded activities

- > Monthly older people's club
- > Community Christmas lights switch on
- > Community newsletters
- > Community café
- > Social events and day trips for older residents
- > Art workshops for disadvantaged young people
- > Weekly music sessions for disadvantaged young people
- > Inclusive after-school drama sessions
- > Monthly 'memory café' to support residents with memory loss
- > Weekly food hub

SPOTLIGHT ON

Cambridgeshire Older People's Enterprise (COPE)

Monthly social meetings for older people to reduce social isolation

- talks on local history
- health and fitness advice
- financial scam and fraud awareness information
- entertainment

SPOTLIGHT ON

Romsey Mill

39 weekly open access youth club sessions at Trumpington Pavillion

- karaoke, singing and performing activities
- **10** DJ and mixing sessions
- proactive support from specialist youth workers
- social isolation issues among young people addressed

SPOTLIGHT ON

Trumpington Residents' Association

50 weekly sessions of Trumpington Food Hub providing affordable food

- **127** weekly beneficiaries (**82** adults and **45** children)
- **12** volunteers supported the Food Hub



SPOTLIGHT ON

Trumpington Community Drama Group

48 weekly, inclusive after-school drama sessions for 15 to 17 year olds, culminating in **3** performances at Clay Farm Community Centre



Funded organisations

- > Ainsworth Area Residents' Association
- > Cambridge Royal Albert Homes
- > C3 Church
- > Coleridge Community Forum
- > Friends of Mill Road Cemetery
- > Gwydir Street Friends
- > Merry-Go-Round Toy Library
- > Mill Road Winter Fair
- > Oblique Arts
- > Petersfield Area Community Trust
- > Romsey Mill
- > Romsey Music Project
- > Signal Box Community Centre
- > St Martin's Church
- > St Philip's Church

Funded activities

- > Creation of mini allotment planters
- > Afternoon tea for isolated older residents
- > Weekly free hot meals
- > Newsletters and community meetings
- > Day trips for low-income families
- > Maintaining green space for wellbeing
- > Community heritage and local history
- > Children's toy library
- > Annual winter fair
- > Art for disabled and neurodiverse residents
- > Seasonal community events
- > Music sessions for young people
- > Lunchtime recitals and community choir
- > Summer holiday activities
- > Weekly breakfast clubs
- > Cookery classes for low-income residents



SPOTLIGHT ON

St Martin's Church

Free, weekly breakfast club to combat social isolation

- Information, support and internet access
- **40** regular breakfast guests
- Board games and social activities



SPOTLIGHT ON

Mill Road Winter Fair

10,000 attendees; a free event with street music, food and stalls

- parade led by a Samba band comprising local secondary school pupils
- local mosques offered tours and open days on Fair day
- music and performances including Rap, Afro House Dance, Tai Chi, Morris dancing and street jive
- 26 local charity stalls



SPOTLIGHT ON

Romsey Mill

65 music sessions for disadvantaged 11 to 16 year olds, led by a specialist youth worker

- **20** young people engaged
- **47** open mic and open access sessions
- **65** 1:1 and small group studio sessions
- Individual and group performance coaching



Funded organisations

- > Eddington Residents' Association
- > Friends of Histon Road Cemetery
- > Friends of Midsummer Common
- > Oblique Arts

Funded activities

- > Monthly neighbourhood social events
- > Maintenance of green space and community activities
- > Community volunteering support and events
- > Arts activities for older residents



SPOTLIGHT ON

Oblique Arts

6 creative workshops and an exhibition for older isolated residents



“Ah this group. I'm so glad that I found it. My friend brought me. I have been to another art group. I could not afford it. Everyone was middle class and there was a lot of pressure around your art. I feel comfortable here. It's a mix of people. I don't have the pressure and everyone is lovely, helping each other. The tutors really understand and I have got a lot more confidence. Thank you”

Workshop participant

“The cemetery is an absolute delight and it has cheered me up on many a grey day”

Local resident



SPOTLIGHT ON

Friends of Midsummer common

45 community volunteering sessions, seasonal events and activities

- Raising awareness of the community orchard
- Increasing biodiversity on Midsummer Common
- Planting of new bulbs, bushes and wildflowers
- Creation of a drought-tolerant pomegranate hedgerow

Friends of Histon Road Cemetery



