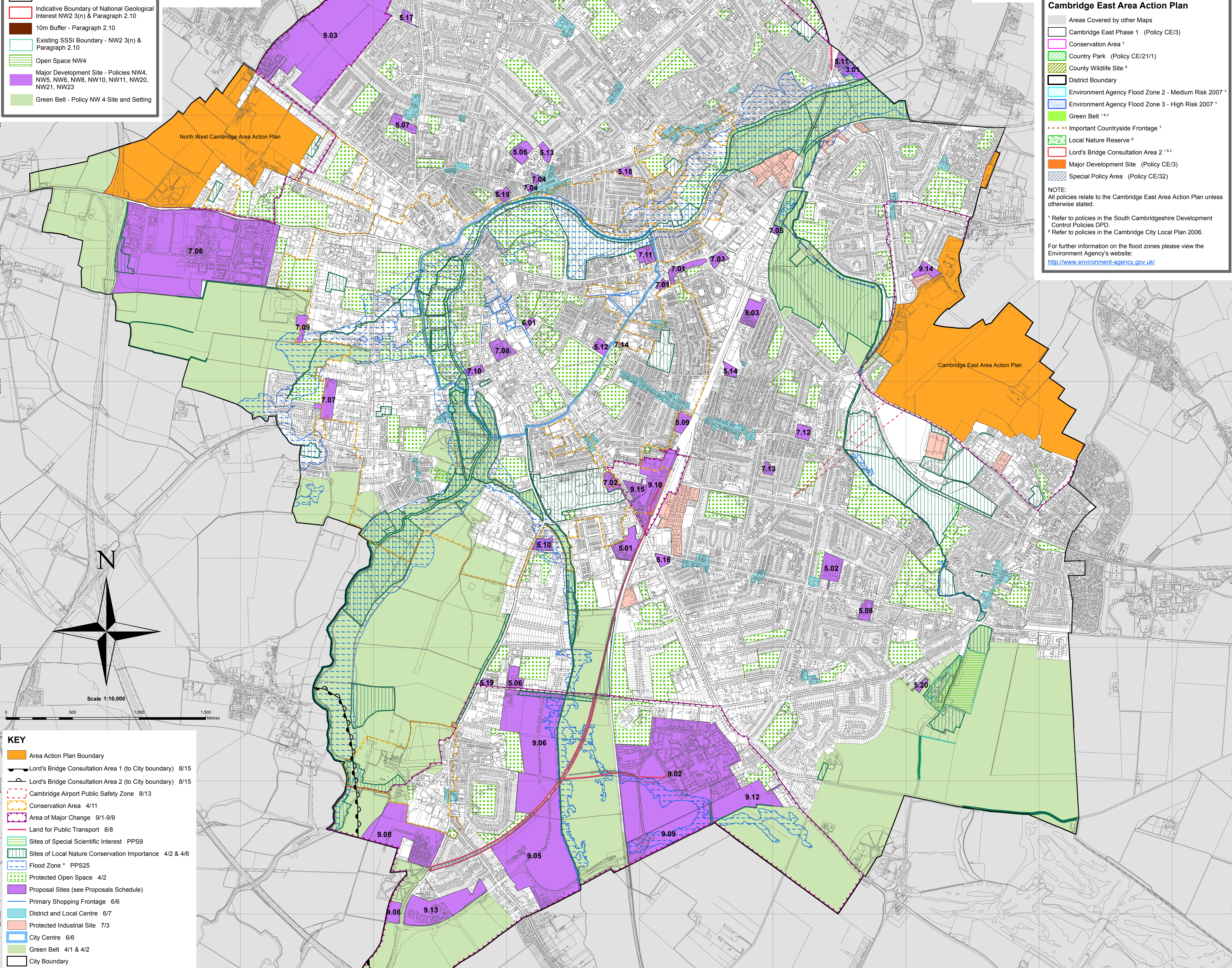
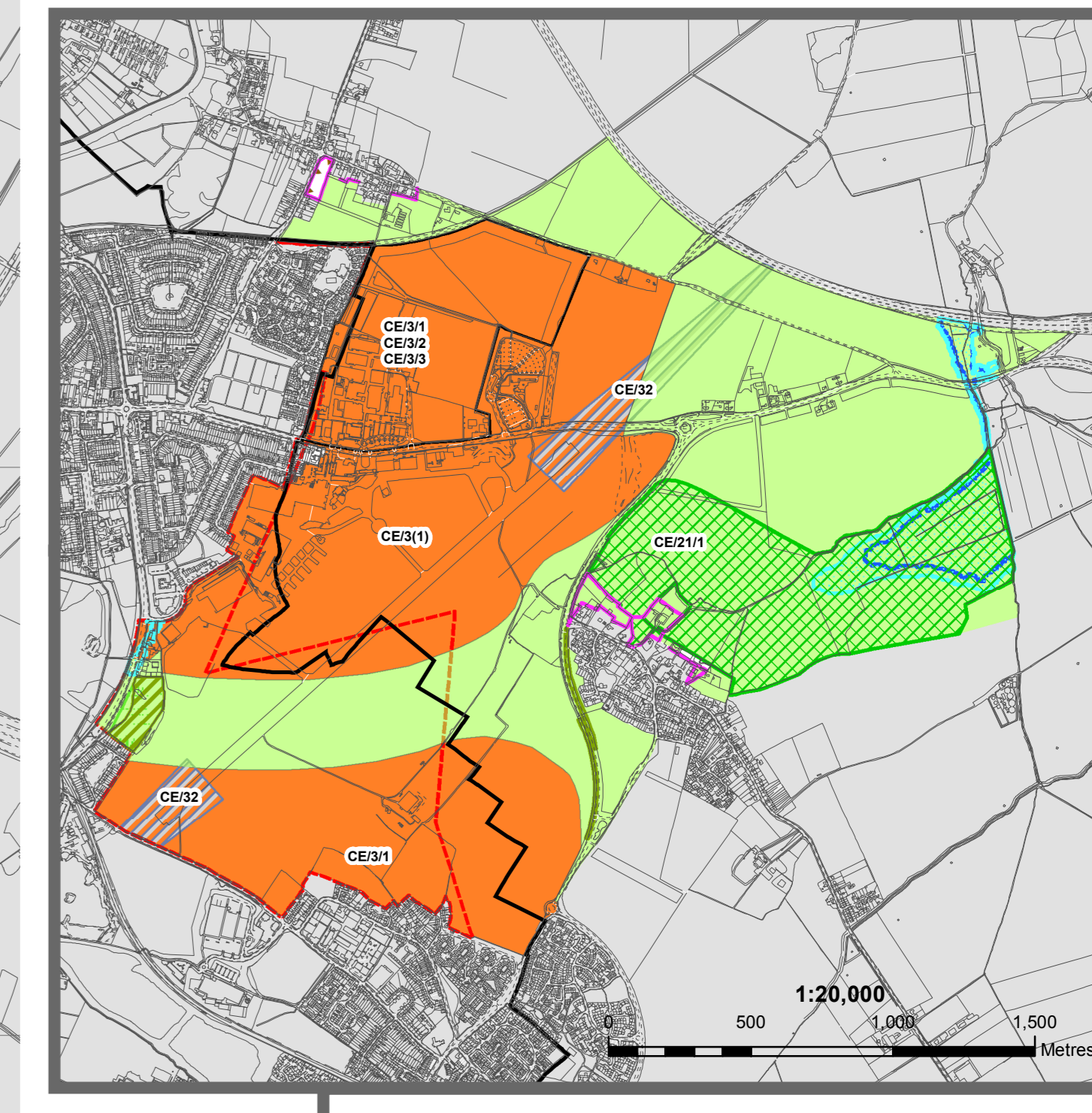
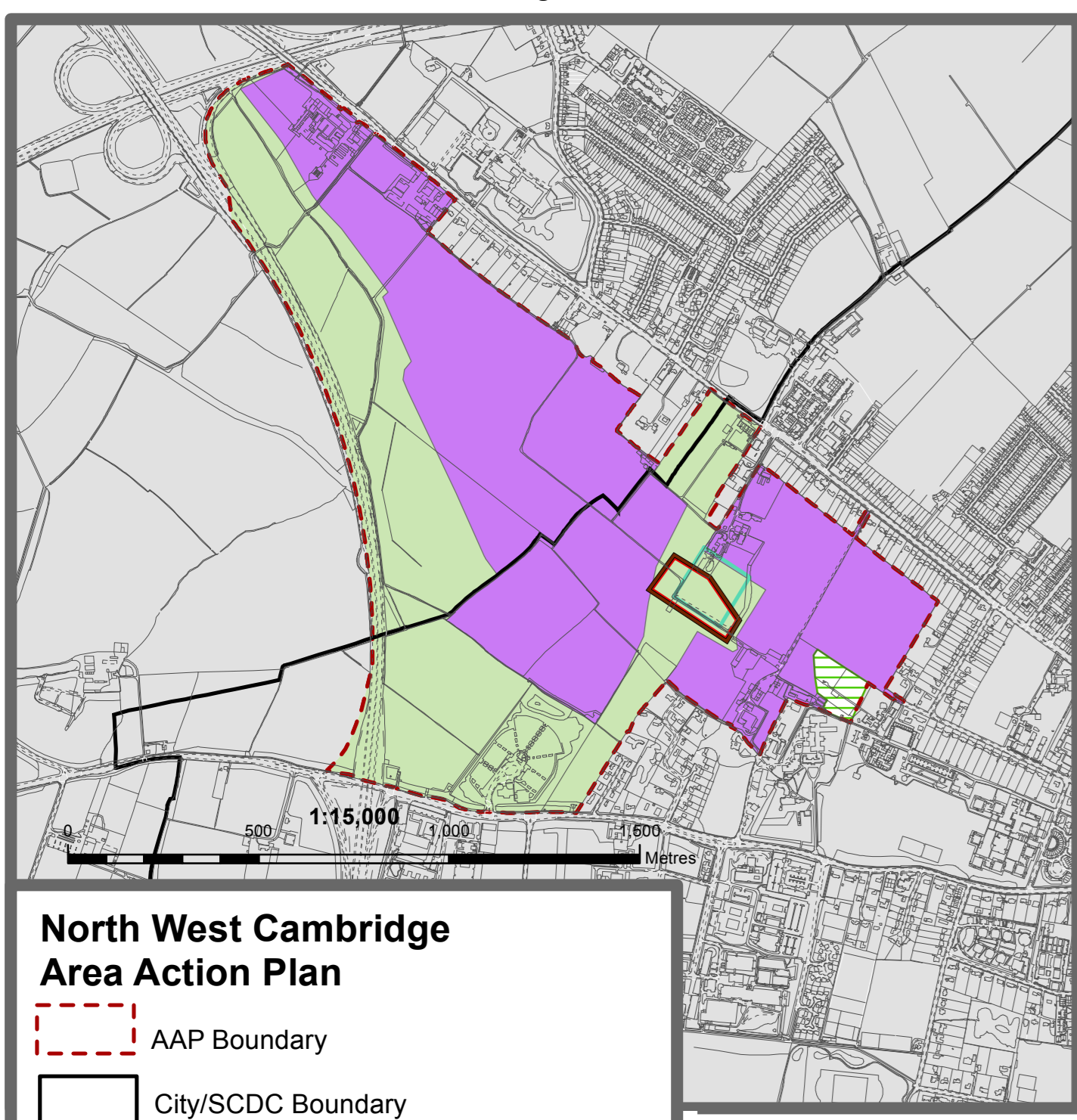


CAMBRIDGE PROPOSALS MAP: OCTOBER 2009



KEY

- Area Action Plan Boundary
- Lord's Bridge Consultation Area 1 (to City boundary) 8/15
- Lord's Bridge Consultation Area 2 (to City boundary) 8/15
- Cambridge Airport Public Safety Zone 8/13
- Conservation Area 4/11
- Area of Major Change 9/1-9/9
- Land for Public Transport 8/8
- Sites of Special Scientific Interest PPS9
- Sites of Local Nature Conservation Importance 4/2 & 4/6
- Flood Zone * PPS25
- Protected Open Space 4/2
- Proposal Sites (see Proposals Schedule)
- Primary Shopping Frontage 6/6
- District and Local Centre 6/7
- Protected Industrial Site 7/3
- City Centre 6/6
- Green Belt 4/1 & 4/2
- City Boundary

Cambridge East Area Action Plan

- Areas Covered by other Maps
- Cambridge East Phase 1 (Policy CE/3)
- Conservation Area ¹
- Country Park (Policy CE/21/1)
- County Wildlife Site ²
- District Boundary
- Environment Agency Flood Zone 2 - Medium Risk 2007 ¹
- Environment Agency Flood Zone 3 - High Risk 2007 ¹
- Green Belt ^{1,2}
- Important Countryside Frontage ¹
- Local Nature Reserve ²
- Lord's Bridge Consultation Area 2 ^{1,2}
- Major Development Site (Policy CE/3)
- Special Policy Area (Policy CE/32)

NOTE:
All policies relate to the Cambridge East Area Action Plan unless otherwise stated.

¹ Refer to policies in the South Cambridgeshire Development Control Policies DPD.
² Refer to policies in the Cambridge City Local Plan 2006.

For further information on the flood zones please view the Environment Agency's website:
<http://www.environment-agency.gov.uk/>

Part of site 9.04 and much of the remainder of the City, excluding the Green Belt, are areas of search for waste management sites in the Cambridgeshire and Peterborough Waste Local Plan 2003 (CPWLP 2003). See proposals WLP18 (n) and WLP18 (j) of the CPWLP 2003.

Reference numbers refer to the main relevant policies in the written statement.
*For the most up to date information please check the Environment Agency's website at www.environment-agency.gov.uk/

This map is reproduced from Ordnance Survey material with the permission of Her Majesty's Stationery Office (c) Crown copyright. Unauthorised reproduction infringes Crown copyright and may lead to prosecution or civil proceedings. Cambridge City Council (License No. 100019730) 2009. 542000 543000 544000 545000 546000 547000 548000 549000 550000