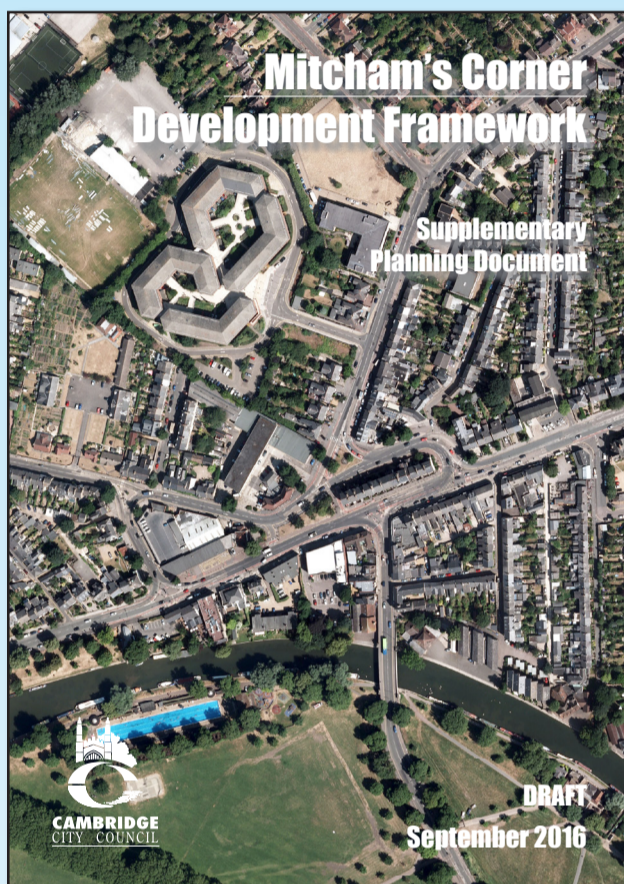


Mitcham's Corner Development Framework SPD



Cambridge City Council have produced a draft Development Framework Supplementary Planning Document (SPD) for the Mitcham's Corner Area. The document outlines the aspirations for the area and for specific large sites, as well as the key issues, constraints and opportunities that will influence how future changes to the street network and new development will take place. We welcome your comments and suggestions on the draft Development Framework which will be subject to a six week consultation period.

Public consultation on the Development Framework (SPD) will run from: 9am Monday 5th September 2016 to 5pm Monday 17th October 2016

Public Exhibition

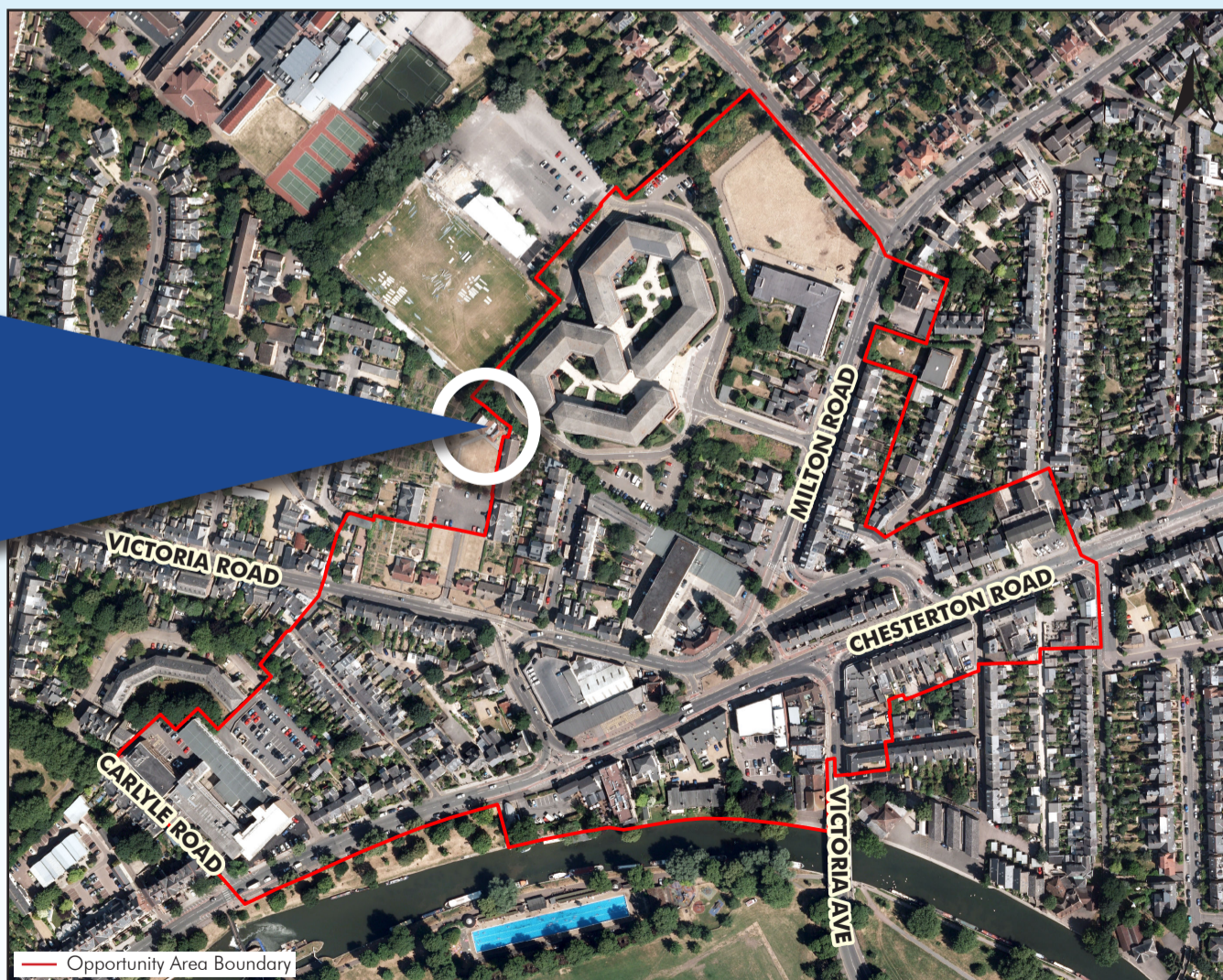
Two public exhibitions will take place at:

**The Cambridge Victoria Homes Pavilion,
Victoria Road, Cambridge,
CB4 3DX**

**From 3pm - 8pm on 14th
September and 5th October
2016**

You can also view a copy of the draft SPD and make comments via the Council's website:

www.cambridge.gov.uk/mitchams-corner-spd. All documents can be viewed at the City Council's Customer Service Centre, 4 Regent Street, CB2 1BY and Milton Road Library, Ascham Road, CB4 2BD



© Crown copyright and database right 2016. Ordnance Survey licence number 100019730. Not to scale

The Mitcham's Corner Development Framework (SPD) is available to view online at:

www.cambridge.gov.uk/mitchams-corner-spd