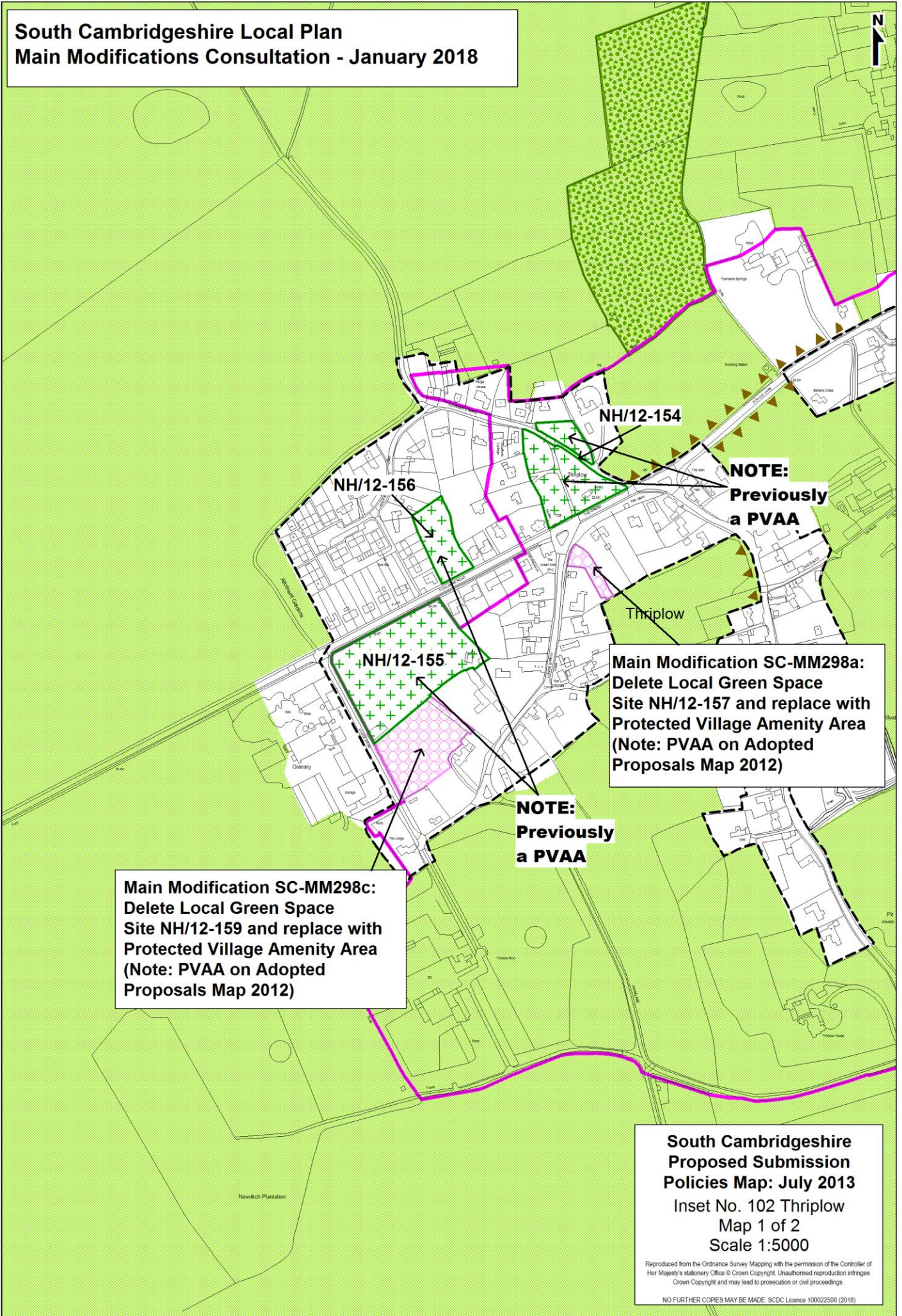


**South Cambridgeshire Local Plan
Main Modifications Consultation - January 2018**



NH/12-156

NH/12-154

**NOTE:
Previously
a PVAA**

Thriplow

NH/12-155

**Main Modification SC-MM298a:
Delete Local Green Space
Site NH/12-157 and replace with
Protected Village Amenity Area
(Note: PVAA on Adopted
Proposals Map 2012)**

**NOTE:
Previously
a PVAA**

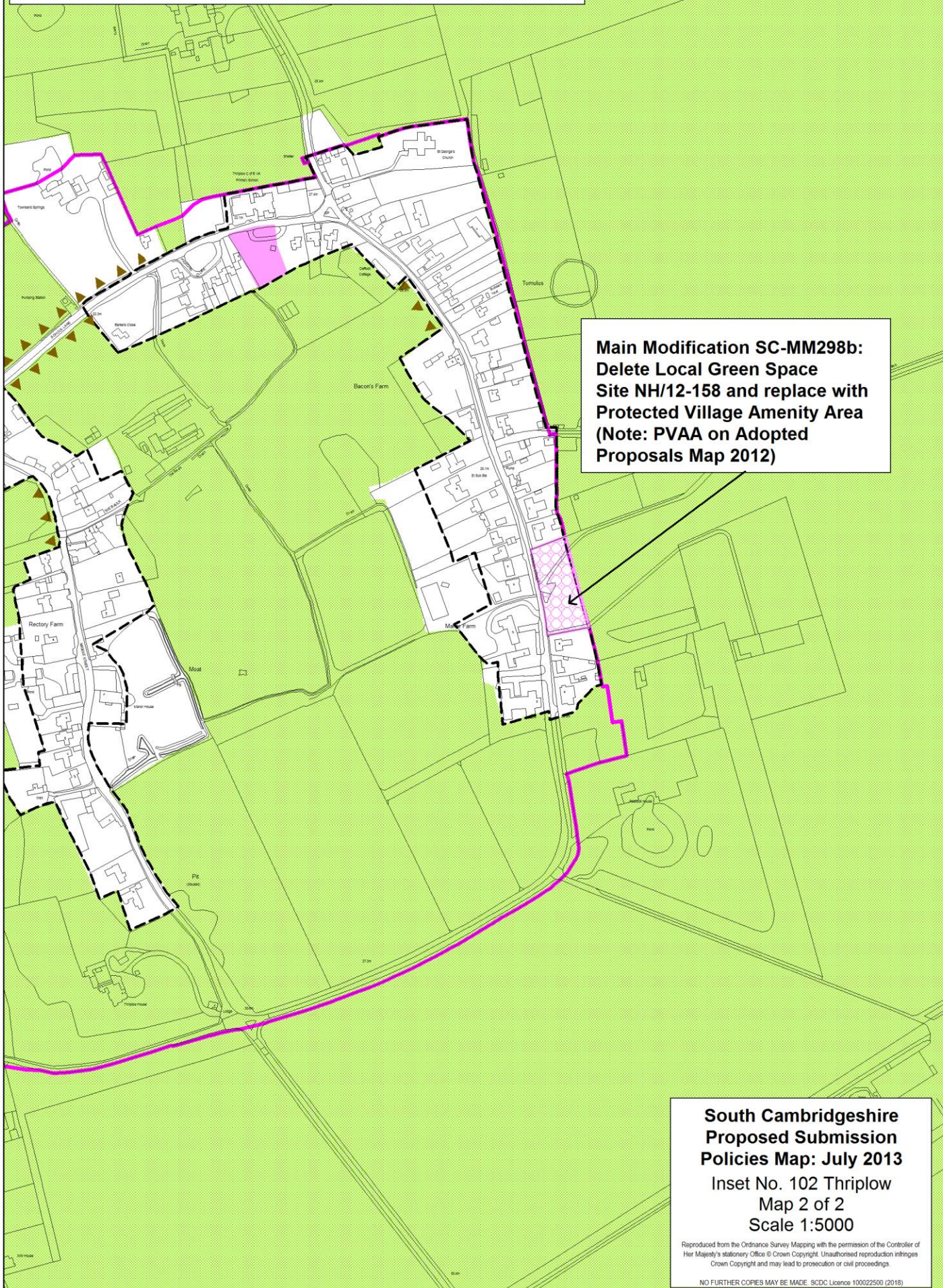
**Main Modification SC-MM298c:
Delete Local Green Space
Site NH/12-159 and replace with
Protected Village Amenity Area
(Note: PVAA on Adopted
Proposals Map 2012)**

**South Cambridgeshire
Proposed Submission
Policies Map: July 2013**
Inset No. 102 Thriplow
Map 1 of 2
Scale 1:5000

Reproduced from the Ordnance Survey Mapping with the permission of the Controller of Her Majesty's Stationery Office © Crown Copyright. Unauthorised reproduction infringes Crown Copyright and may lead to prosecution or civil proceedings.

NO FURTHER COPIES MAY BE MADE. SDCD Licence 100022500 (2018)

**South Cambridgeshire Local Plan
Main Modifications Consultation - January 2018**

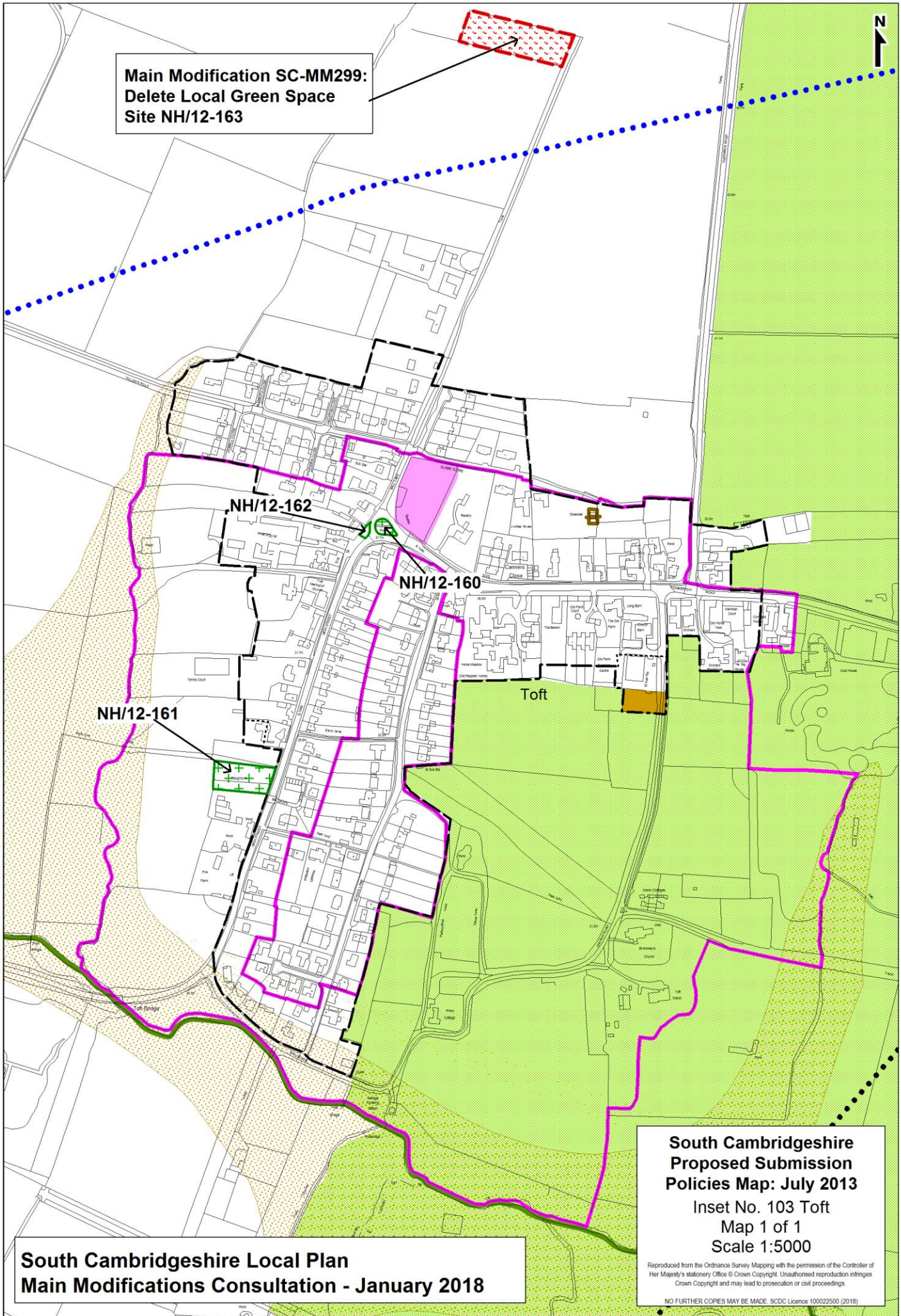


**Main Modification SC-MM298b:
Delete Local Green Space
Site NH/12-158 and replace with
Protected Village Amenity Area
(Note: PVAA on Adopted
Proposals Map 2012)**

**South Cambridgeshire
Proposed Submission
Policies Map: July 2013**
Inset No. 102 Thriplow
Map 2 of 2
Scale 1:5000

Reproduced from the Ordnance Survey Mapping with the permission of the Controller of Her Majesty's Stationery Office © Crown Copyright. Unauthorised reproduction infringes Crown Copyright and may lead to prosecution or civil proceedings.

NO FURTHER COPIES MAY BE MADE. SDCD Licence 100022500 (2018)



**Main Modification SC-MM299:
Delete Local Green Space
Site NH/12-163**

NH/12-162

NH/12-160

NH/12-161

Toft

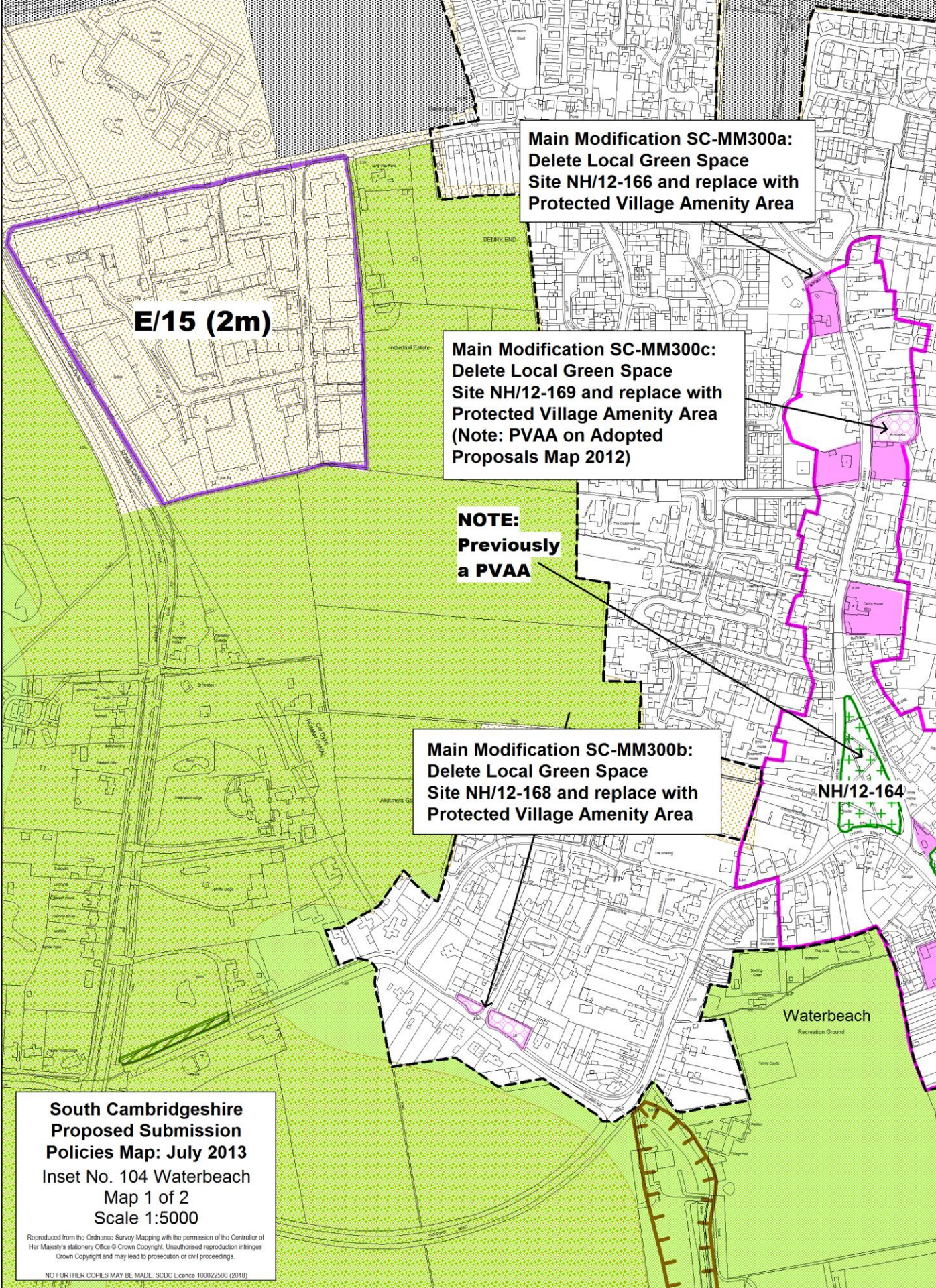
**South Cambridgeshire
Proposed Submission
Policies Map: July 2013**
Inset No. 103 Toft
Map 1 of 1
Scale 1:5000

**South Cambridgeshire Local Plan
Main Modifications Consultation - January 2018**

Reproduced from the Ordnance Survey Mapping with the permission of the Controller of Her Majesty's Stationery Office © Crown Copyright. Unauthorised reproduction infringes Crown Copyright and may lead to prosecution or civil proceedings.

NO FURTHER COPIES MAY BE MADE. SDCD Licence 100022500 (2018)

**South Cambridgeshire Local Plan
Main Modifications Consultation - January 2018**



Main Modification SC-MM300a:
Delete Local Green Space
Site NH/12-166 and replace with
Protected Village Amenity Area

Main Modification SC-MM300c:
Delete Local Green Space
Site NH/12-169 and replace with
Protected Village Amenity Area
(Note: PVAA on Adopted
Proposals Map 2012)

NOTE:
Previously
a PVAA

Main Modification SC-MM300b:
Delete Local Green Space
Site NH/12-168 and replace with
Protected Village Amenity Area

NH/12-164

Waterbeach
Recreation Ground

**South Cambridgeshire
Proposed Submission
Policies Map: July 2013**
Inset No. 104 Waterbeach
Map 1 of 2
Scale 1:5000

Reproduced from the Ordnance Survey Mapping with the permission of the Controller of Her Majesty's Stationery Office © Crown Copyright. Unauthorised reproduction infringes Crown Copyright and may lead to prosecution or civil proceedings.

NO FURTHER COPIES MAY BE MADE. SDC Licence 100022500 (2018)

**South Cambridgeshire Local Plan
Main Modifications Consultation - January 2018**



**Main Modification SC-MM300a:
Delete Local Green Space
Site NH/12-166 and replace with
Protected Village Amenity Area**

**Main Modification SC-MM300d:
Delete the Green Belt
designation from land north
of Bannold Road**

**Main Modification SC-MM300c:
Delete Local Green Space
Site NH/12-169 and replace with
Protected Village Amenity Area
(Note: PVAA on Adopted
Proposals Map 2012)**

**NOTE:
Previously
a PVAA**

NH/12-164

NH/12-165

Waterbeach
Recreation Ground

**South Cambridgeshire
Proposed Submission
Policies Map: July 2013
Inset No. 104 Waterbeach
Map 2 of 2
Scale 1:5000**

Reproduced from the Ordnance Survey Mapping with the permission of the Controller of Her Majesty's Stationery Office © Crown Copyright. Unauthorised reproduction infringes Crown Copyright and may lead to prosecution or civil proceedings.
NO FURTHER COPIES MAY BE MADE. SDC Licence 100022500 (2018)