

**South Cambridgeshire Local Plan  
Main Modifications Consultation - January 2018**

**South Cambridgeshire  
Proposed Submission  
Policies Map: July 2013**  
Inset No. 89 Sawston  
Map 1 of 6  
Scale 1:5000

Reproduced from the Ordnance Survey Mapping with the permission of the Controller of Her Majesty's Stationery Office © Crown Copyright. Unauthorised reproduction infringes Crown Copyright and may lead to prosecution or civil proceedings.  
NO FURTHER COPIES MAY BE MADE. SDCDC Licence 100022500 (2018)

**NOTE:  
Previously  
a PVAA**

**NH/12-145**

**Main Modification SC-MM295b:  
Delete Local Green Space  
Site NH/12-144 and replace with  
Protected Village Amenity Area**

**NH/12-142**

**Main Modification SC-MM295a:  
Delete Local Green Space  
Site NH/12-140 and replace with  
Protected Village Amenity Area**

**South Cambridgeshire Local Plan  
Main Modifications Consultation - January 2018**



**H/1 (a)**

**Main Modification SC-MM295d:  
Delete Local Green Space  
Site NH/12-148 and replace with  
Protected Village Amenity Area**

**NOTE:  
Previously  
a PVAA**

**NH/12-146**

**Main Modification SC-MM295b:  
Delete Local Green Space  
Site NH/12-144 and replace with  
Protected Village Amenity Area**

**Main Modification SC-MM295a:  
Delete Local Green Space  
Site NH/12-140 and replace with  
Protected Village Amenity Area**

**South Cambridgeshire  
Proposed Submission  
Policies Map: July 2013**  
Inset No. 89 Sawston  
Map 2 of 6  
Scale 1:5000

Reproduced from the Ordnance Survey Mapping with the permission of the Controller of Her Majesty's Stationery Office © Crown Copyright. Unauthorised reproduction infringes Crown Copyright and may lead to prosecution or civil proceedings.

NO FURTHER COPIES MAY BE MADE. SDCD Licence 100022500 (2018)

**South Cambridgeshire Local Plan  
Main Modifications Consultation - January 2018**



NH/12-142

**Main Modification SC-MM295a:**  
Delete Local Green Space  
Site NH/12-140 and replace with  
Protected Village Amenity Area

**NOTE:**  
Previously  
a PVAA

**NOTE:**  
Previously  
a PVAA

**Main Modification SC-MM295f:**  
Delete Local Green Space  
Site NH/12-143 (land within  
nursery)

NH/12-143

**Main Modification SC-MM295c:**  
Delete Local Green Space  
Site NH/12-147b and replace with  
Protected Village Amenity Area

NH/12-147a

**NOTE:**  
Previously  
a PVAA

**Main Modification SC-MM295e:**  
Delete Local Green Space  
Site NH/12-141

**E/3**

**South Cambridgeshire  
Proposed Submission  
Policies Map: July 2013**  
Inset No. 89 Sawston  
Map 4 of 6  
Scale 1:5000

Reproduced from the Ordnance Survey Mapping with the permission of the Controller of Her Majesty's Stationery Office © Crown Copyright. Unauthorised reproduction infringes Crown Copyright and may lead to prosecution or civil proceedings.  
NO FURTHER COPIES MAY BE MADE. SICDC Licence 100022500 (2018)

**South Cambridgeshire Local Plan  
Main Modifications Consultation - January 2018**



**Main Modification SC-MM295a:**  
Delete Local Green Space  
Site NH/12-140 and replace with  
Protected Village Amenity Area

**Main Modification SC-MM295f:**  
Delete Local Green Space  
Site NH/12-143 (to exclude  
land within the nursery)

**NOTE:**  
Previously  
a PVAA

NH/12-143

**Main Modification SC-MM295c:**  
Delete Local Green Space  
Site NH/12-147b and replace with  
Protected Village Amenity Area

NH/12-147a

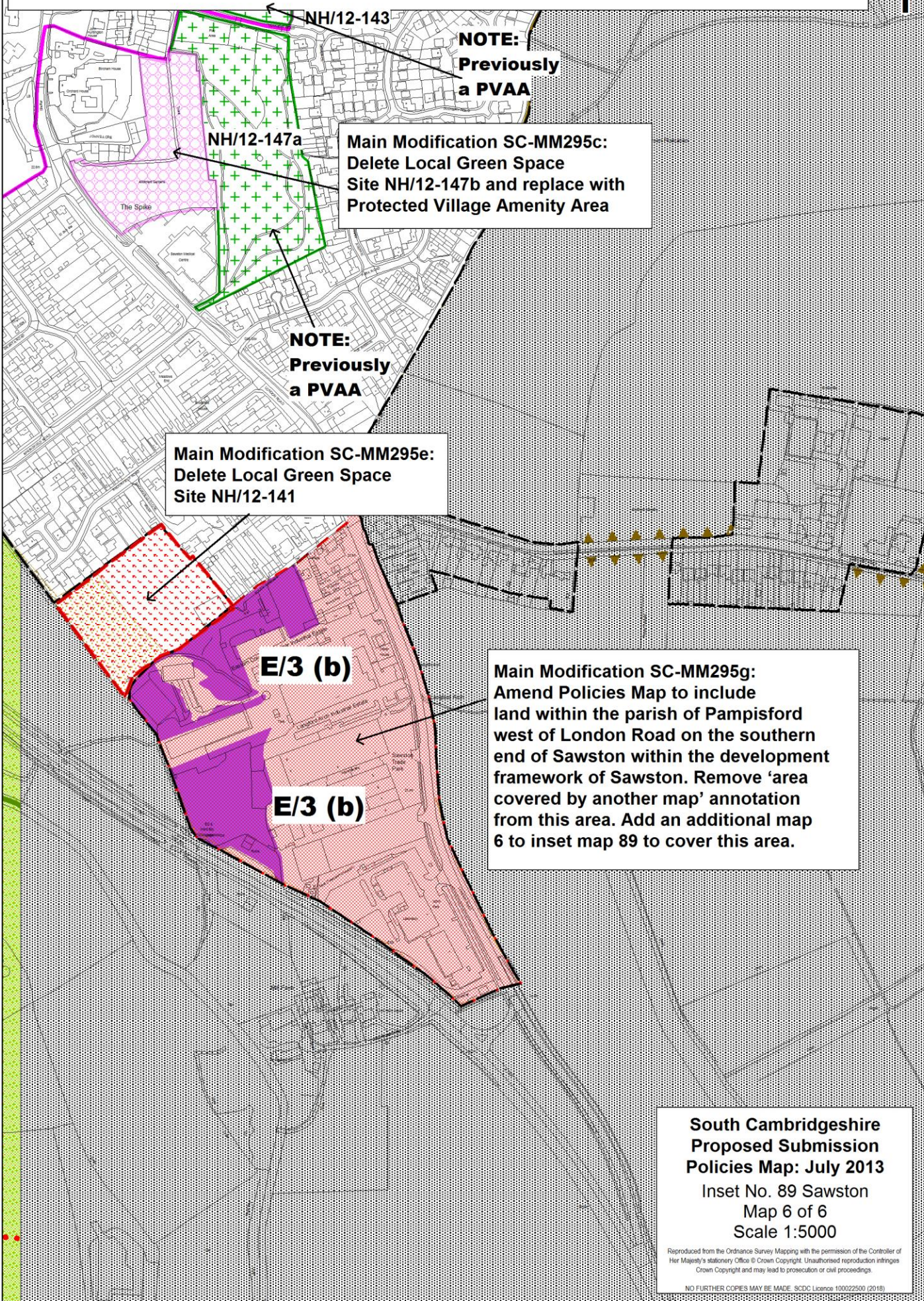
**NOTE:**  
Previously  
a PVAA

**Main Modification SC-MM295e:**  
Delete Local Green Space  
Site NH/12-141

**E/3 (b)**

**South Cambridgeshire  
Proposed Submission  
Policies Map: July 2013**  
Inset No. 89 Sawston  
Map 5 of 6  
Scale 1:5000

Reproduced from the Ordnance Survey Mapping with the permission of the Controller of Her Majesty's Stationery Office © Crown Copyright. Unauthorised reproduction infringes Crown Copyright and may lead to prosecution or civil proceedings.  
NO FURTHER COPIES MAY BE MADE. SCDC Licence 100022500 (2018)



**NOTE:**  
Previously  
a PVAA

**Main Modification SC-MM295c:**  
Delete Local Green Space  
Site NH/12-147b and replace with  
Protected Village Amenity Area

**NOTE:**  
Previously  
a PVAA

**Main Modification SC-MM295e:**  
Delete Local Green Space  
Site NH/12-141

**Main Modification SC-MM295g:**  
Amend Policies Map to include  
land within the parish of Pampisford  
west of London Road on the southern  
end of Sawston within the development  
framework of Sawston. Remove 'area  
covered by another map' annotation  
from this area. Add an additional map  
6 to inset map 89 to cover this area.

**South Cambridgeshire  
Proposed Submission  
Policies Map: July 2013**  
Inset No. 89 Sawston  
Map 6 of 6  
Scale 1:5000

Reproduced from the Ordnance Survey Mapping with the permission of the Controller of Her Majesty's Stationery Office © Crown Copyright. Unauthorised reproduction infringes Crown Copyright and may lead to prosecution or civil proceedings.

NO FURTHER COPIES MAY BE MADE. SCDC Licence 100022500 (2018)

**South Cambridgeshire  
Proposed Submission  
Policies Map: July 2013**  
Inset No. 95 Steeple Morden  
Map 1 of 3  
Scale 1:5000

Reproduced from the Ordnance Survey Mapping with the permission of the Controller of Her Majesty's Stationery Office © Crown Copyright. Unauthorised reproduction infringes Crown Copyright and may lead to prosecution or civil proceedings.

NO FURTHER COPIES MAY BE MADE. SDCCL Licence 100022500 (2018)

**South Cambridgeshire Local Plan  
Main Modifications Consultation -  
January 2018**



**Main Modification SC-MM296c:  
Delete Local Green Space  
Site NH/12-153**

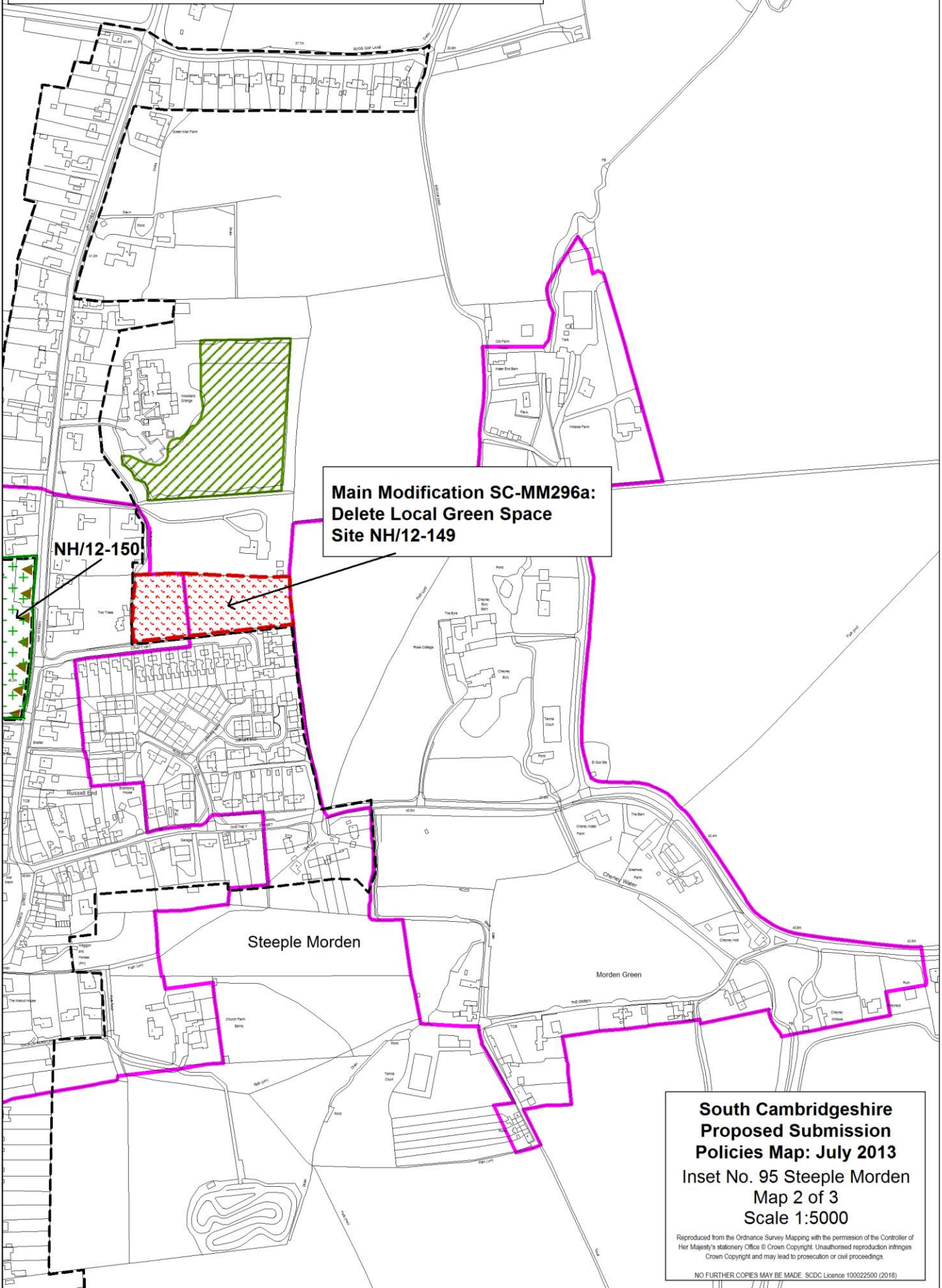
**Main Modification SC-MM296b:  
Delete Local Green Space  
Site NH/12-152**

**Main Modification SC-MM296a:  
Delete Local Green Space  
Site NH/12-149**

**NH/12-151**

**NH/12-150**

**South Cambridgeshire Local Plan  
Main Modifications Consultation - January 2018**



**Main Modification SC-MM296a:  
Delete Local Green Space  
Site NH/12-149**

**NH/12-150**

**Steeple Morden**

Morden Green

**South Cambridgeshire  
Proposed Submission  
Policies Map: July 2013**  
Inset No. 95 Steeple Morden  
Map 2 of 3  
Scale 1:5000

Reproduced from the Ordnance Survey Mapping with the permission of the Controller of Her Majesty's Stationery Office © Crown Copyright. Unauthorised reproduction infringes Crown Copyright and may lead to prosecution or civil proceedings.

NO FURTHER COPIES MAY BE MADE. SDCD Licence 100022500 (2018)

South Cambridgeshire Local Plan Main Modifications Consultation - January 2018



**Main Modification SC-MM296b:  
Delete Local Green Space  
Site NH/12-152**

NH/12-151

NH/12-150

**Main Modification SC-MM296a:  
Delete Local Green Space  
Site NH/12-149**

Steeple Morden

**South Cambridgeshire  
Proposed Submission  
Policies Map: July 2013**  
Inset No. 95 Steeple Morden  
Map 3 of 3  
Scale 1:5000

Reproduced from the Ordnance Survey Mapping with the permission of the Controller of Her Majesty's Stationery Office © Crown Copyright. Unauthorised reproduction infringes Crown Copyright and may lead to prosecution or civil proceedings.

NO FURTHER COPIES MAY BE MADE. SDCDC Licence 100022500 (2018)



**South Cambridgeshire Local Plan  
Main Modifications Consultation - January 2018**



**Main Modification SC-MM297:  
Delete Open Space Allocation  
Policy SC/1 (1d)**

**South Cambridgeshire  
Proposed Submission  
Policies Map: July 2013**  
Inset No. 98 Swavesey  
Map 1 of 2  
Scale 1:5000

Reproduced from the Ordnance Survey Mapping with the permission of the Controller of Her Majesty's Stationery Office © Crown Copyright. Unauthorised reproduction infringes Crown Copyright and may lead to prosecution or civil proceedings.

NO FURTHER COPIES MAY BE MADE. SDCD Licence 100022500 (2018)