

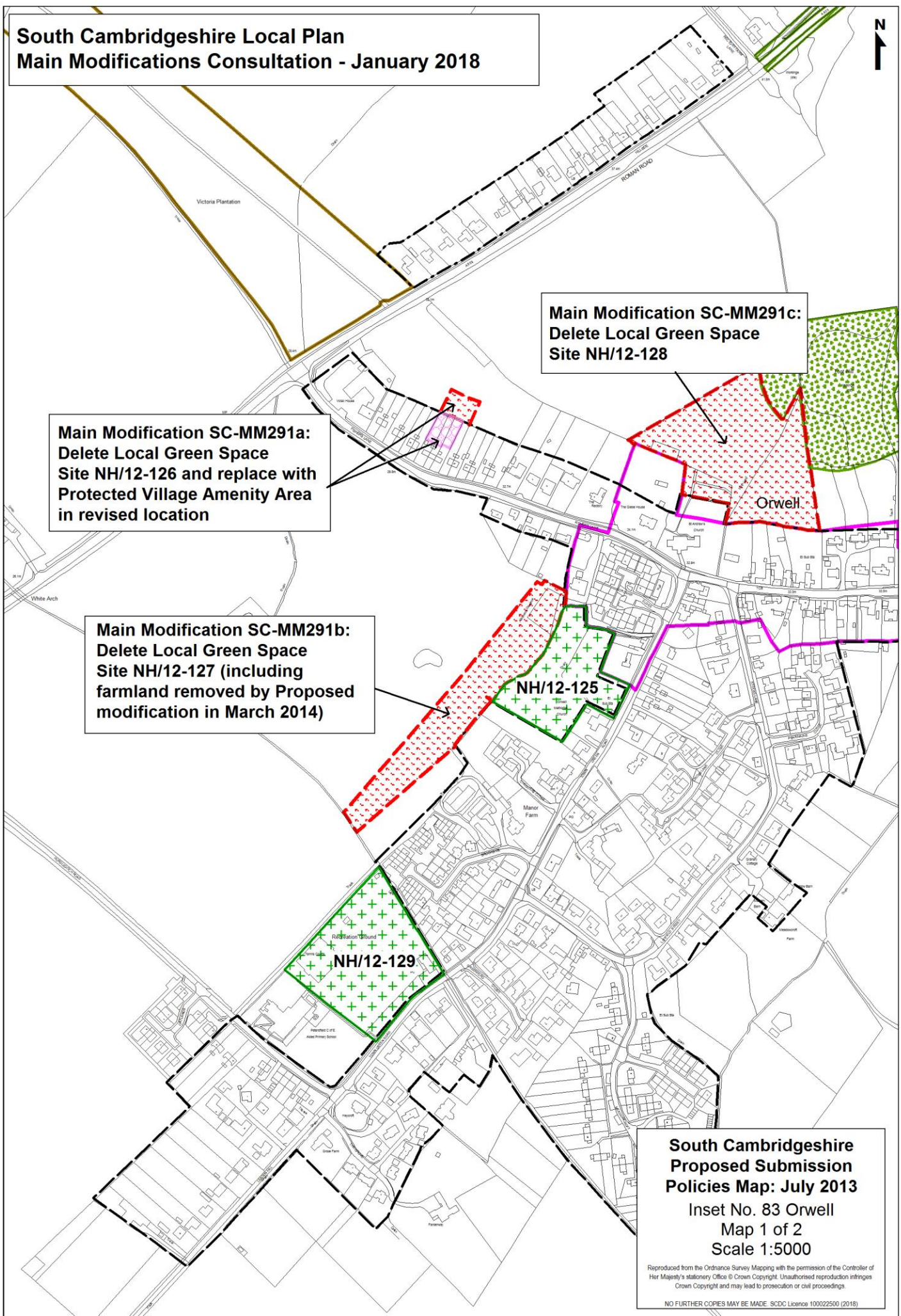
**South Cambridgeshire Local Plan
Main Modifications Consultation - January 2018**



**Main Modification SC-MM291a:
Delete Local Green Space
Site NH/12-126 and replace with
Protected Village Amenity Area
in revised location**

**Main Modification SC-MM291c:
Delete Local Green Space
Site NH/12-128**

**Main Modification SC-MM291b:
Delete Local Green Space
Site NH/12-127 (including
farmland removed by Proposed
modification in March 2014)**



**South Cambridgeshire
Proposed Submission
Policies Map: July 2013**
Inset No. 83 Orwell
Map 1 of 2
Scale 1:5000

Reproduced from the Ordnance Survey Mapping with the permission of the Controller of Her Majesty's Stationery Office © Crown Copyright. Unauthorised reproduction infringes Crown Copyright and may lead to prosecution or civil proceedings.

NO FURTHER COPIES MAY BE MADE. SDCD Licence 100022500 (2018)

**South Cambridgeshire Local Plan
Main Modifications Consultation - January 2018**

**Main Modification SC-MM291a:
Delete Local Green Space
Site NH/12-126 and replace with
Protected Village Amenity Area
in revised location**

**Main Modification SC-MM291c:
Delete Local Green Space
Site NH/12-128**

**Main Modification SC-MM291b:
Delete Local Green Space
Site NH/12-127 (including
farmland removed by Proposed
modification in March 2014)**

**South Cambridgeshire
Proposed Submission
Policies Map: July 2013**
Inset No. 83 Orwell
Map 2 of 2
Scale 1:5000

Reproduced from the Ordnance Survey Mapping with the permission of the Controller of Her Majesty's Stationery Office © Crown Copyright. Unauthorised reproduction infringes Crown Copyright and may lead to prosecution or civil proceedings.

NO FURTHER COPIES MAY BE MADE. SDCD Licence 100022500 (2018)

**South Cambridgeshire Local Plan
Main Modifications Consultation - January 2018**



**Main Modification SC-MM292b:
Delete Local Green Space
Site NH/12-131 (Note: PVAA
on Adopted Proposals Map 2012)**

**Main Modification SC-MM292a:
Delete Local Green Space
Site NH/12-130**

**Main Modification SC-MM292c:
Delete Open Space Allocation
Policy SC/1 (1a)**

**SP/14 (2f)
(NOTE: no policy area
in Draft Local Plan)**

Over

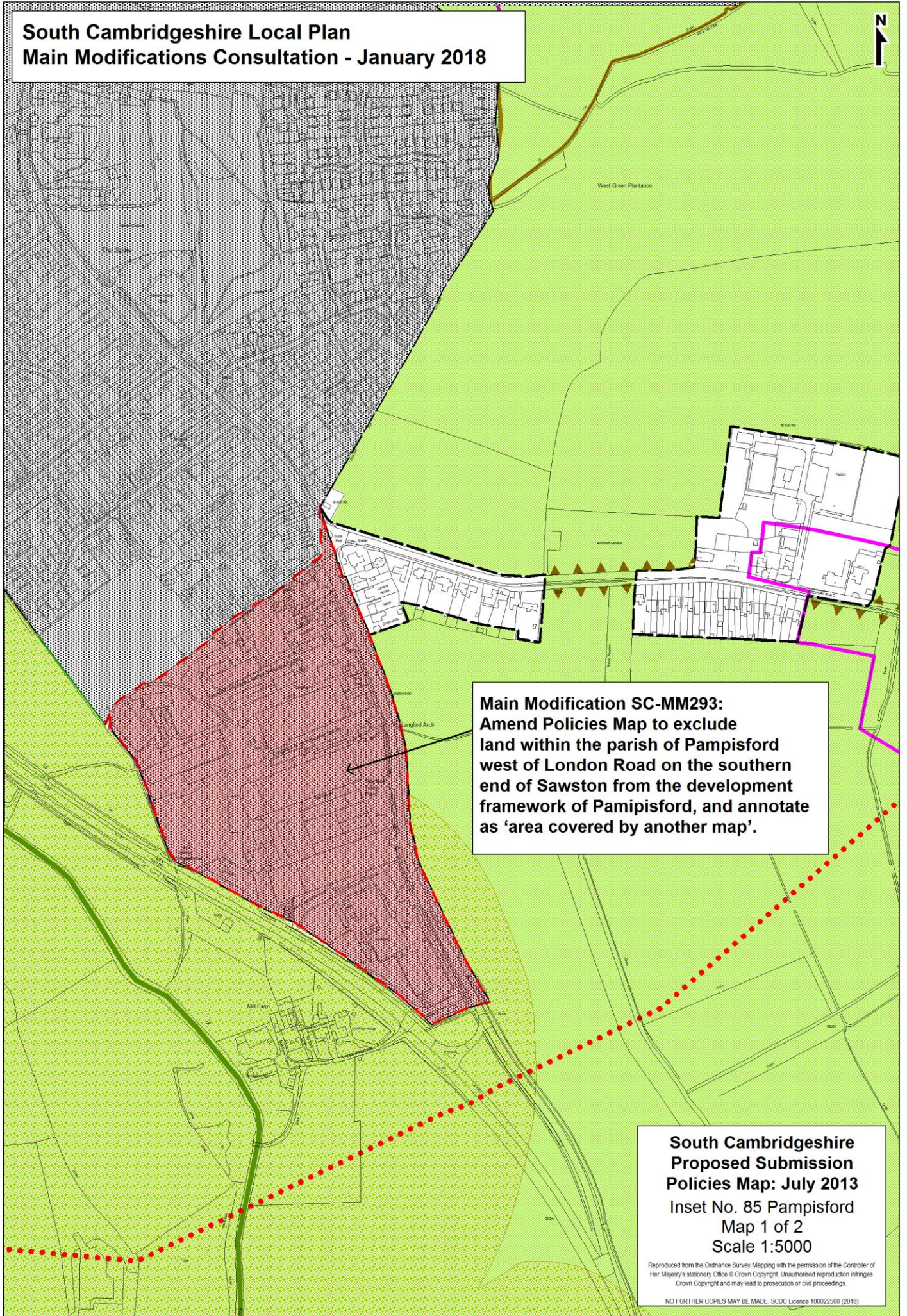
**South Cambridgeshire
Proposed Submission
Policies Map: July 2013**

Inset No. 84 Over
Map 1 of 3
Scale 1:5000

Reproduced from the Ordnance Survey Mapping with the permission of the Controller of Her Majesty's Stationery Office © Crown Copyright. Unauthorised reproduction infringes Crown Copyright and may lead to prosecution or civil proceedings.

NO FURTHER COPIES MAY BE MADE. SDCDC Licence 100022500 (2018)

**South Cambridgeshire Local Plan
Main Modifications Consultation - January 2018**



Main Modification SC-MM293:
Amend Policies Map to exclude land within the parish of Pampisford west of London Road on the southern end of Sawston from the development framework of Pamipisford, and annotate as 'area covered by another map'.

**South Cambridgeshire
Proposed Submission
Policies Map: July 2013**
Inset No. 85 Pampisford
Map 1 of 2
Scale 1:5000

Reproduced from the Ordnance Survey Mapping with the permission of the Controller of Her Majesty's Stationery Office © Crown Copyright. Unauthorised reproduction infringes Crown Copyright and may lead to prosecution or civil proceedings.

NO FURTHER COPIES MAY BE MADE. SCDC Licence 100022500 (2018)

**South Cambridgeshire Local Plan
Main Modifications Consultation - January 2018**

**South Cambridgeshire
Proposed Submission
Policies Map: July 2013**
Inset No. 86 Papworth Everard
Map 1 of 4
Scale 1:5000

Reproduced from the Ordnance Survey Mapping with the permission of the Controller of Her Majesty's Stationery Office © Crown Copyright. Unauthorised reproduction infringes Crown Copyright and may lead to prosecution or civil proceedings.

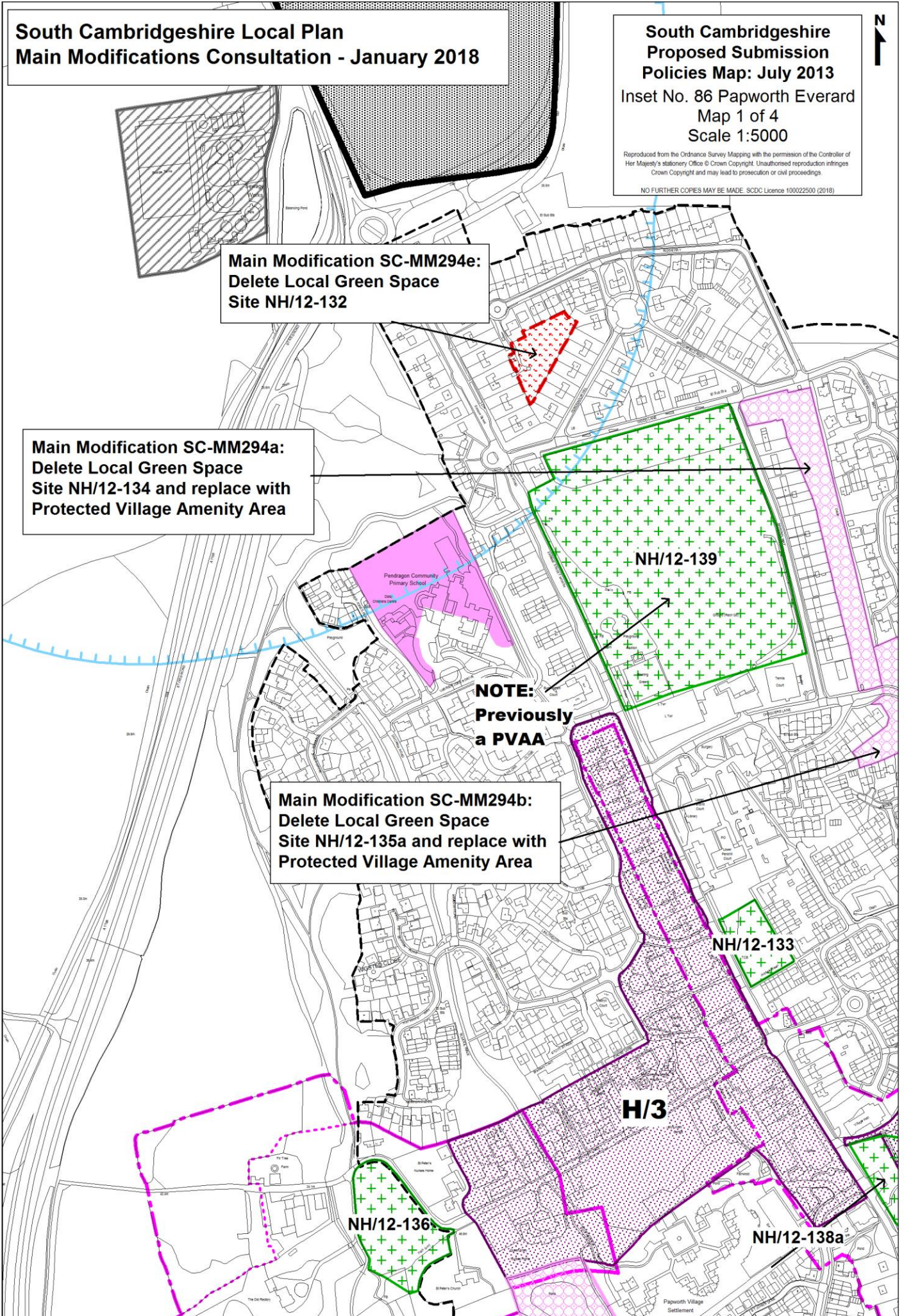
NO FURTHER COPIES MAY BE MADE. SDC Licence 100022500 (2018)

**Main Modification SC-MM294c:
Delete Local Green Space
Site NH/12-132**

**Main Modification SC-MM294a:
Delete Local Green Space
Site NH/12-134 and replace with
Protected Village Amenity Area**

**NOTE:
Previously
a PVAA**

**Main Modification SC-MM294b:
Delete Local Green Space
Site NH/12-135a and replace with
Protected Village Amenity Area**

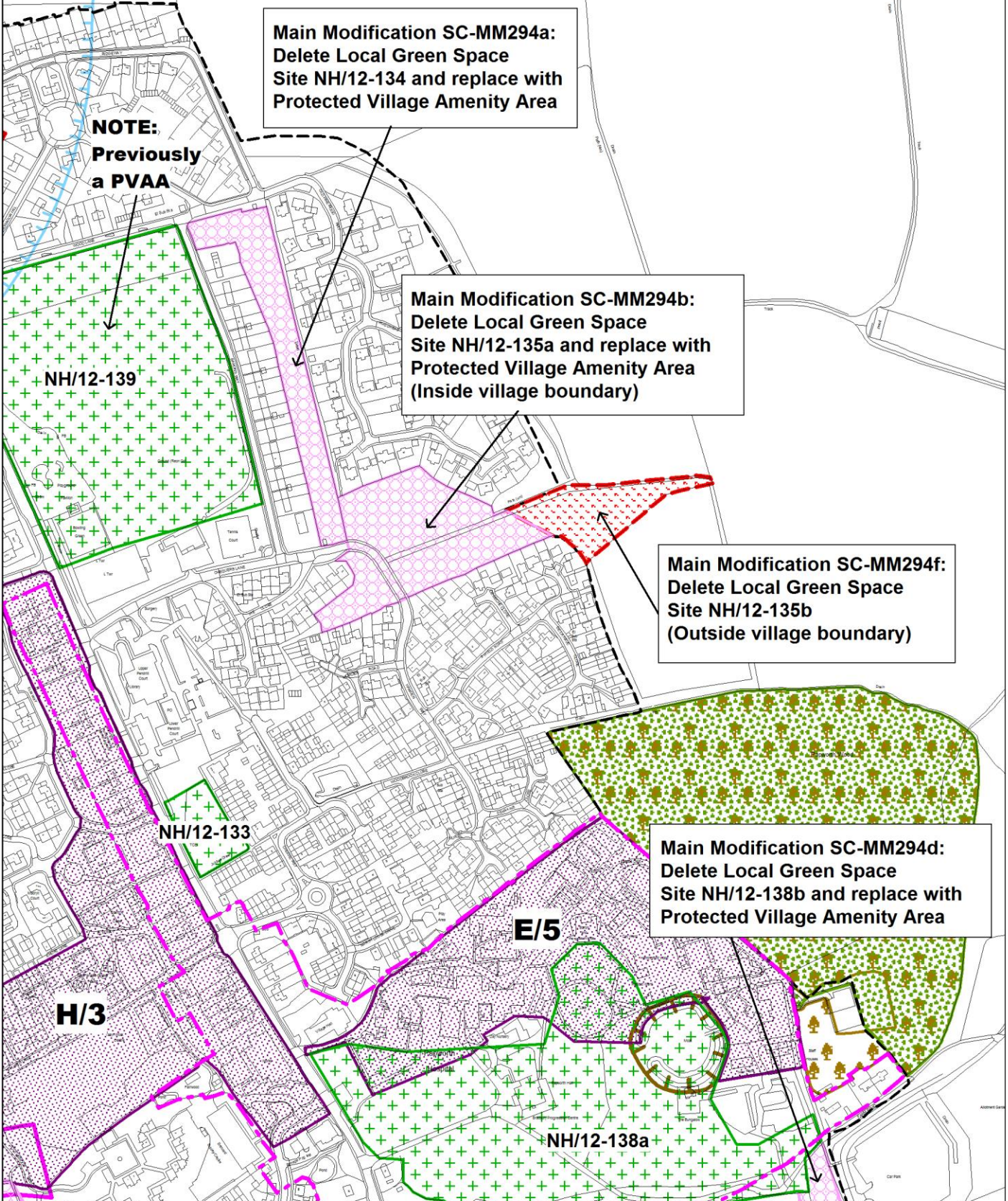


**South Cambridgeshire Local Plan
Main Modifications Consultation - January 2018**

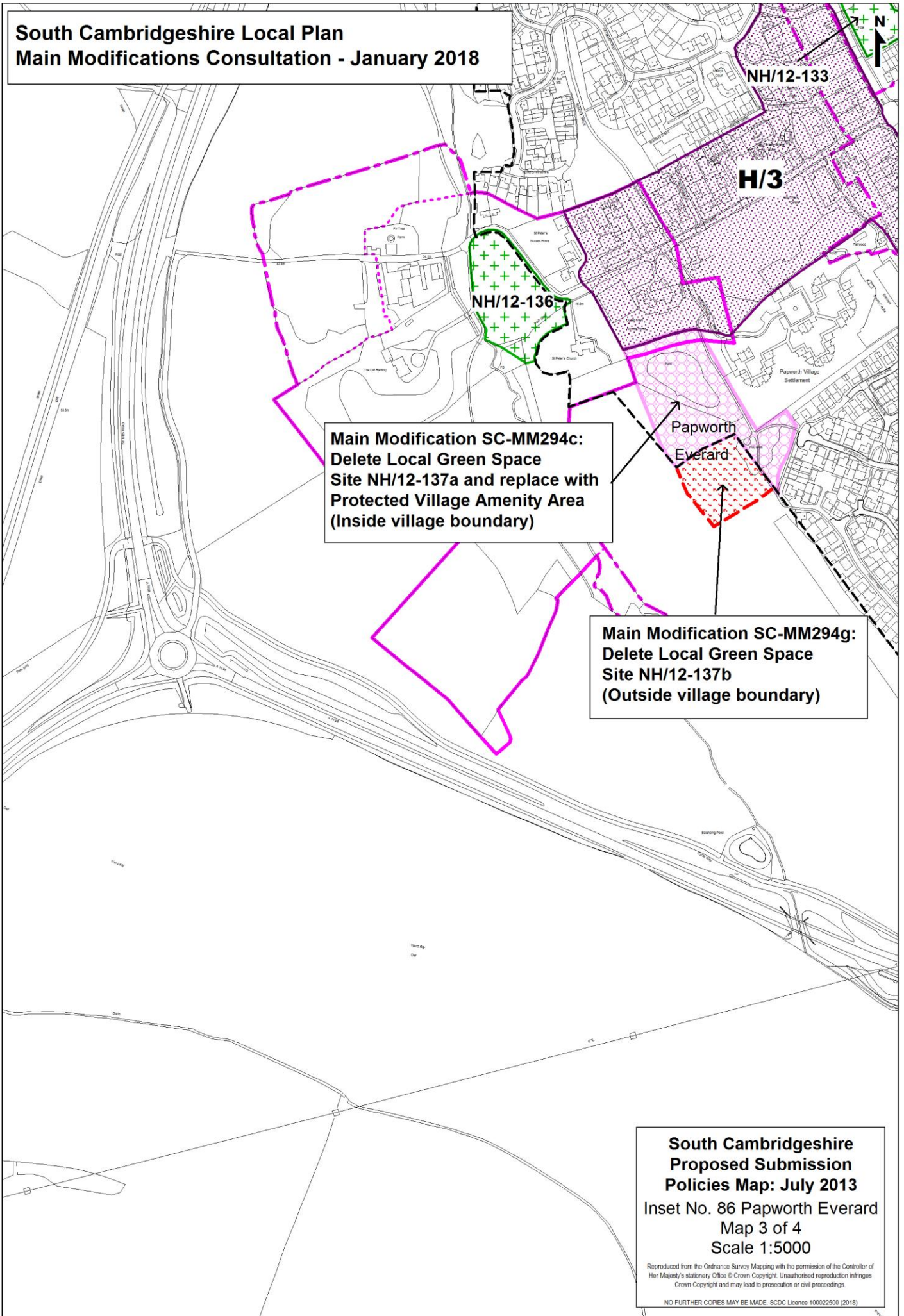
**South Cambridgeshire
Proposed Submission
Policies Map: July 2013**
Inset No. 86 Papworth Everard
Map 2 of 4
Scale 1:5000

Reproduced from the Ordnance Survey Mapping with the permission of the Controller of Her Majesty's Stationery Office © Crown Copyright. Unauthorised reproduction infringes Crown Copyright and may lead to prosecution or civil proceedings.

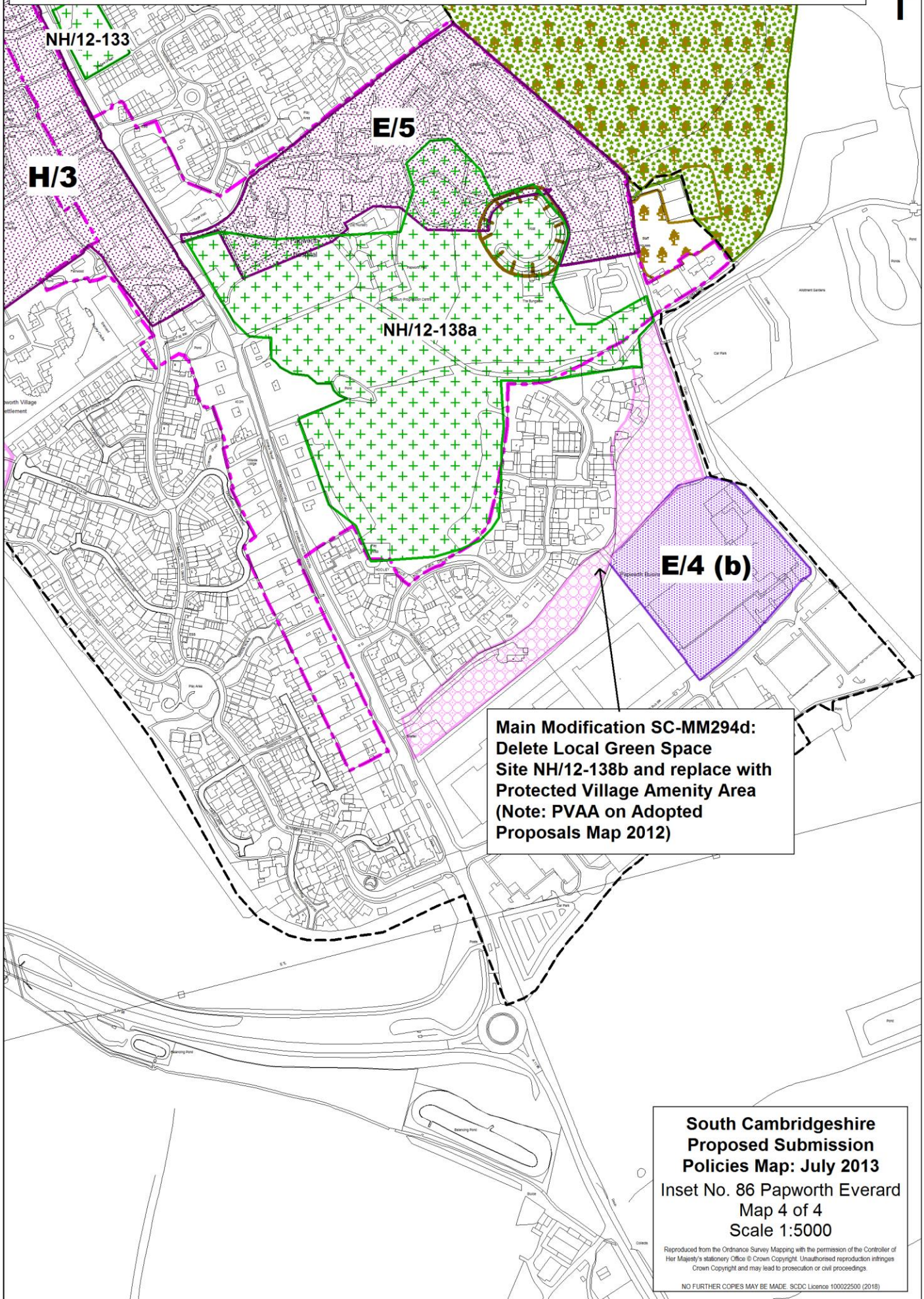
NO FURTHER COPIES MAY BE MADE. SDCD Licence 100022500 (2018)



**South Cambridgeshire Local Plan
Main Modifications Consultation - January 2018**



South Cambridgeshire Local Plan Main Modifications Consultation - January 2018



NH/12-133

E/5

H/3

NH/12-138a

E/4 (b)

Main Modification SC-MM294d:
Delete Local Green Space
Site NH/12-138b and replace with
Protected Village Amenity Area
(Note: PVAA on Adopted
Proposals Map 2012)

**South Cambridgeshire
Proposed Submission
Policies Map: July 2013**
Inset No. 86 Papworth Everard
Map 4 of 4
Scale 1:5000

Reproduced from the Ordnance Survey Mapping with the permission of the Controller of Her Majesty's Stationery Office © Crown Copyright. Unauthorised reproduction infringes Crown Copyright and may lead to prosecution or civil proceedings.

NO FURTHER COPIES MAY BE MADE. SDCD Licence 100022500 (2018)