

**South Cambridgeshire Local Plan
Main Modifications Consultation - January 2018**



**Main Modification SC-MM274a:
Delete Local Green Space
Site NH/12-073 and replace with
Protected Village Amenity Area**

NH/12-071

NH/12-072

**South Cambridgeshire
Proposed Submission
Policies Map: July 2013**

Inset No. 35 Foxton
Map 1 of 2
Scale 1:5000

Reproduced from the Ordnance Survey Mapping with the permission of the Controller of Her Majesty's Stationery Office © Crown Copyright. Unauthorised reproduction infringes Crown Copyright and may lead to prosecution or civil proceedings.

NO FURTHER COPIES MAY BE MADE. SDCD Licence 100022500 (2018)

**South Cambridgeshire Local Plan
Main Modifications Consultation - January 2018**



**Main Modification SC-MM274a:
Delete Local Green Space
Site NH/12-073 and replace with
Protected Village Amenity Area**

NH/12-072

Foxton
NH/12-070a

**Main Modification SC-MM274b:
Delete Local Green Space
Site NH/12-070b**

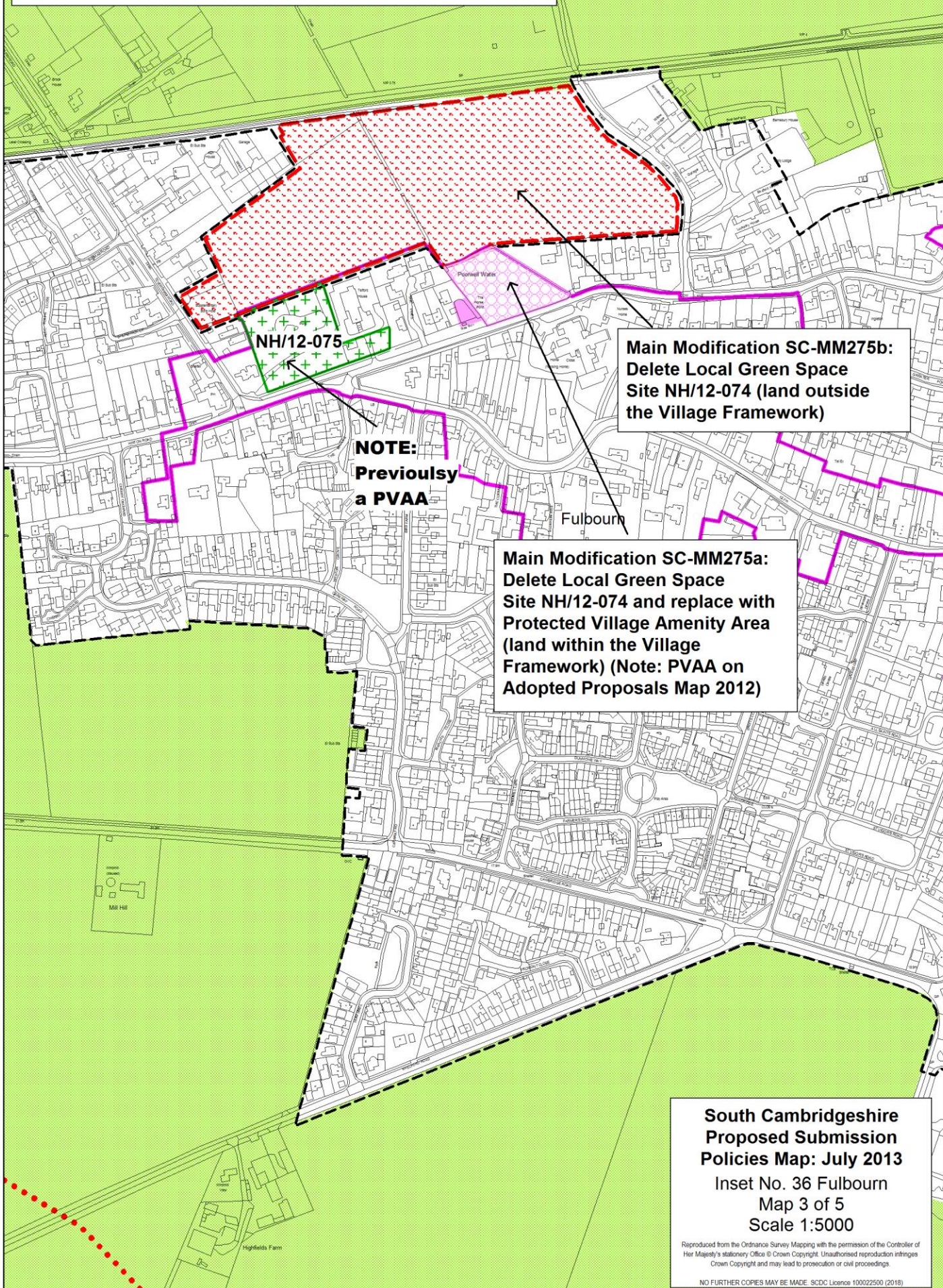
**South Cambridgeshire
Proposed Submission
Policies Map: July 2013**

Inset No. 35 Foxton
Map 2 of 2
Scale 1:5000

Reproduced from the Ordnance Survey Mapping with the permission of the Controller of Her Majesty's Stationery Office © Crown Copyright. Unauthorised reproduction infringes Crown Copyright and may lead to prosecution or civil proceedings.

NO FURTHER COPIES MAY BE MADE. SDCD Licence 100022500 (2018)

**South Cambridgeshire Local Plan
Main Modifications Consultation - January 2018**



NH/12-075

**NOTE:
Previously
a PVAA**

**Main Modification SC-MM275b:
Delete Local Green Space
Site NH/12-074 (land outside
the Village Framework)**

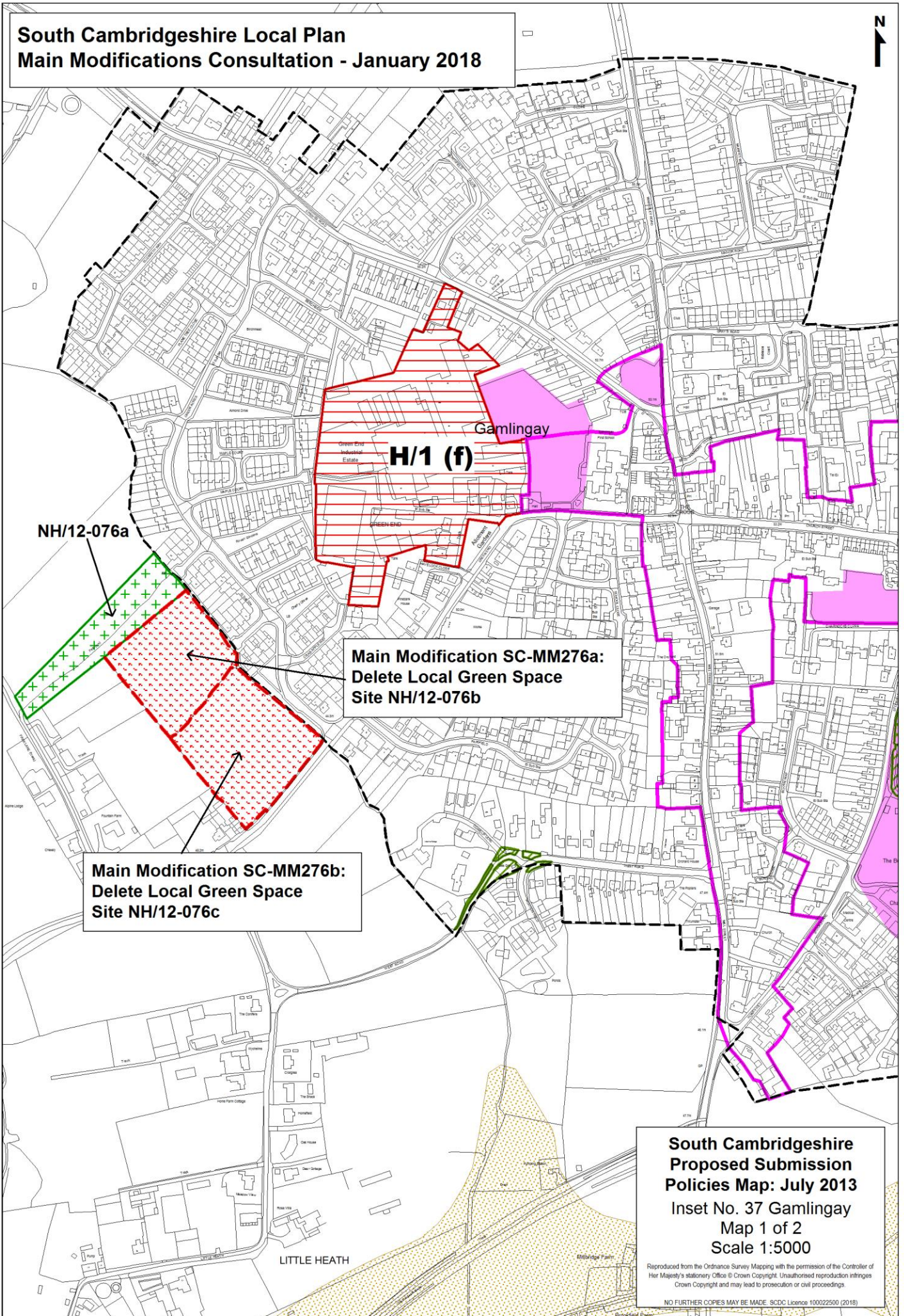
**Main Modification SC-MM275a:
Delete Local Green Space
Site NH/12-074 and replace with
Protected Village Amenity Area
(land within the Village
Framework) (Note: PVAA on
Adopted Proposals Map 2012)**

Fulbourn

**South Cambridgeshire
Proposed Submission
Policies Map: July 2013**
Inset No. 36 Fulbourn
Map 3 of 5
Scale 1:5000

Reproduced from the Ordnance Survey Mapping with the permission of the Controller of Her Majesty's Stationery Office © Crown Copyright. Unauthorised reproduction infringes Crown Copyright and may lead to prosecution or civil proceedings.
NO FURTHER COPIES MAY BE MADE. SCDC Licence 100022500 (2018)

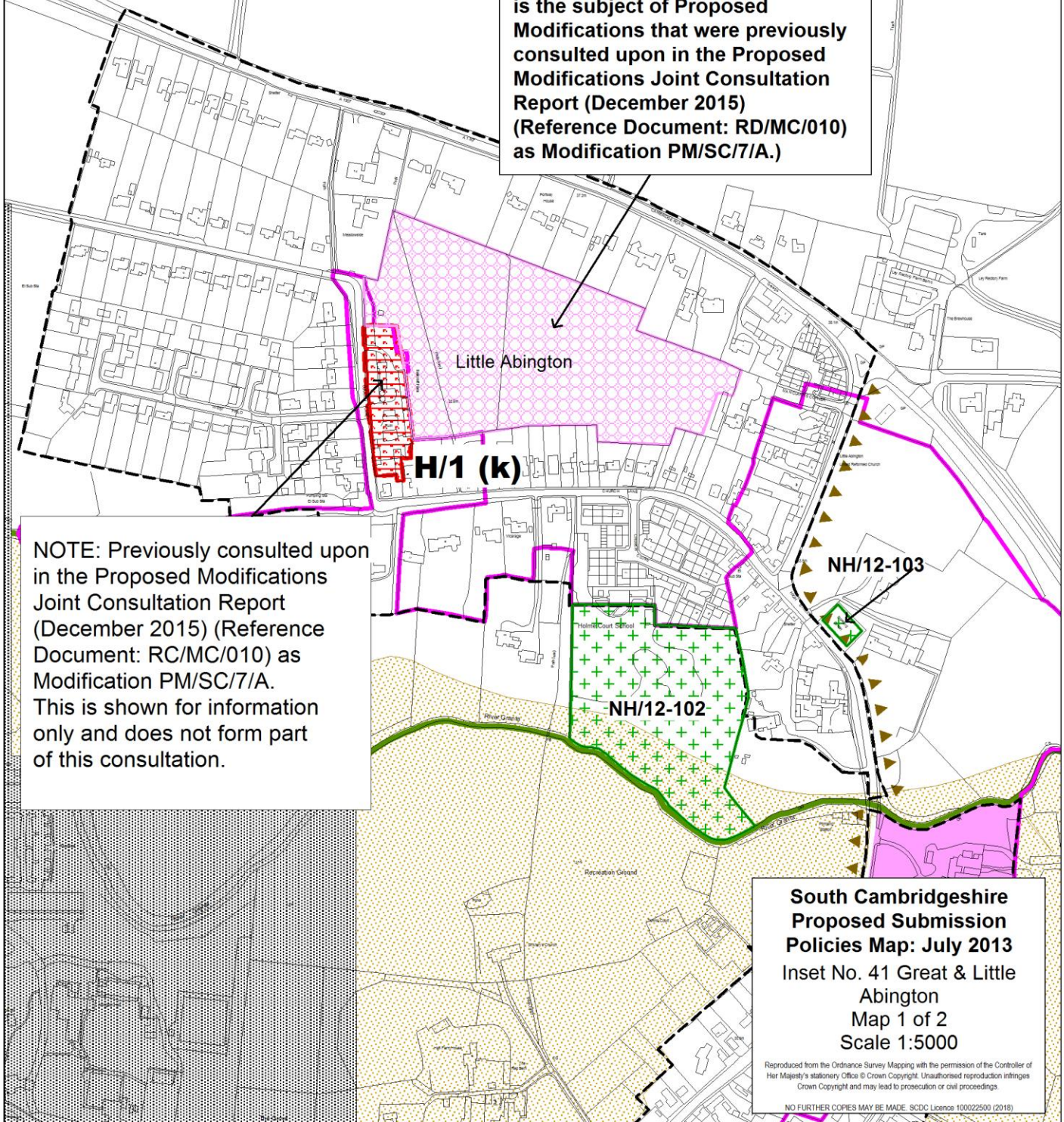
**South Cambridgeshire Local Plan
Main Modifications Consultation - January 2018**



**South Cambridgeshire Local Plan
Main Modifications Consultation - January 2018**



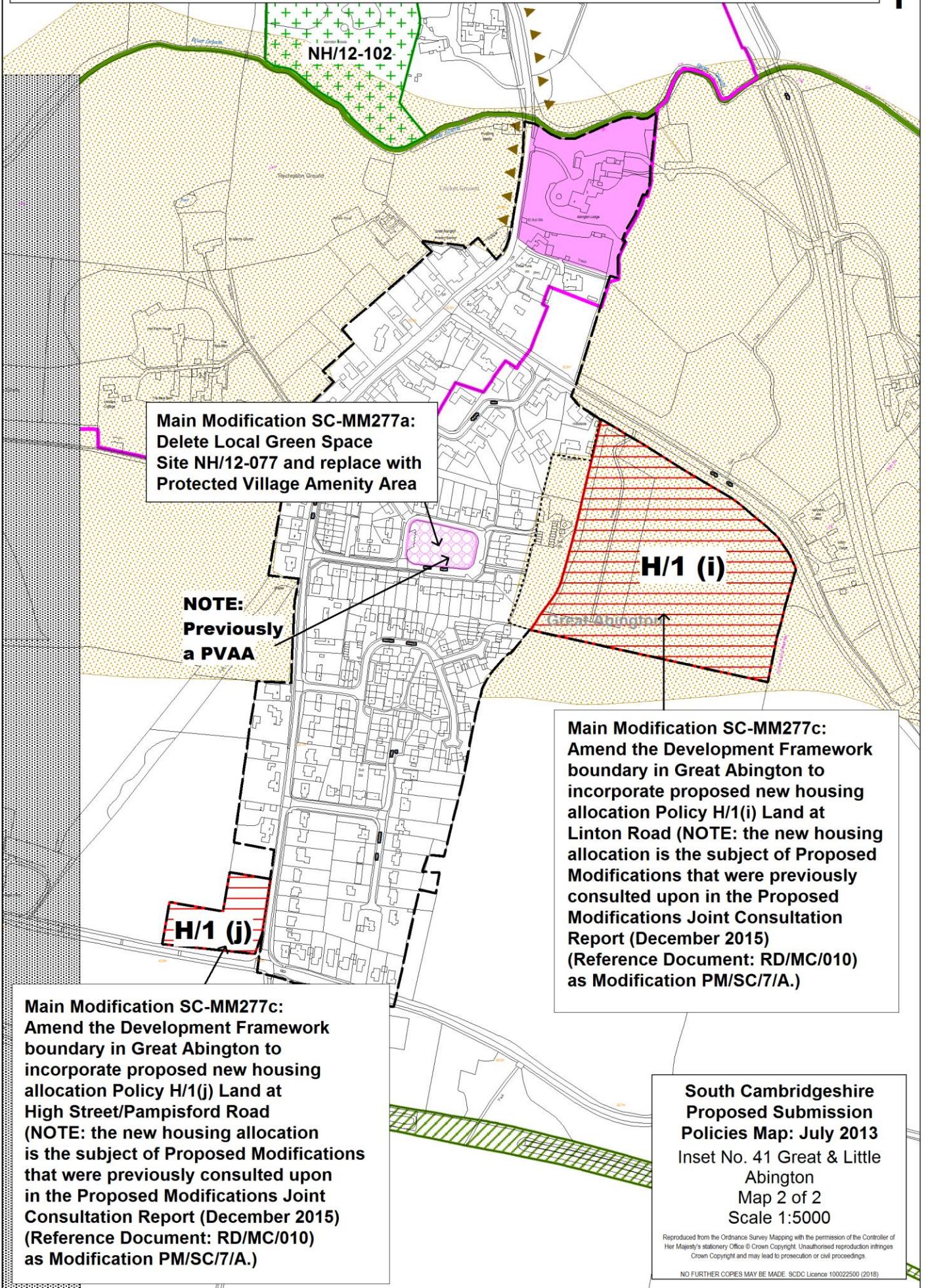
Main Modification SC-MM277b:
Delete Local Green Space site NH/12-104 and replace with Protected Village Amenity Area, with an amended boundary to exclude proposed new housing allocation Policy H/1(k) Land at Bancroft Farm, Church Lane (NOTE: the new housing allocation is the subject of Proposed Modifications that were previously consulted upon in the Proposed Modifications Joint Consultation Report (December 2015) (Reference Document: RD/MC/010) as Modification PM/SC/7/A.)



NOTE: Previously consulted upon in the Proposed Modifications Joint Consultation Report (December 2015) (Reference Document: RC/MC/010) as Modification PM/SC/7/A. This is shown for information only and does not form part of this consultation.

**South Cambridgeshire
Proposed Submission
Policies Map: July 2013**
Inset No. 41 Great & Little
Abington
Map 1 of 2
Scale 1:5000

Reproduced from the Ordnance Survey Mapping with the permission of the Controller of Her Majesty's Stationery Office © Crown Copyright. Unauthorised reproduction infringes Crown Copyright and may lead to prosecution or civil proceedings.
NO FURTHER COPIES MAY BE MADE. SDCDC Licence 100022500 (2018)



Main Modification SC-MM277a:
Delete Local Green Space Site NH/12-077 and replace with Protected Village Amenity Area

NOTE:
Previously a PVAA

Main Modification SC-MM277c:
Amend the Development Framework boundary in Great Abington to incorporate proposed new housing allocation Policy H/1(i) Land at Linton Road (NOTE: the new housing allocation is the subject of Proposed Modifications that were previously consulted upon in the Proposed Modifications Joint Consultation Report (December 2015) (Reference Document: RD/MC/010) as Modification PM/SC/7/A.)

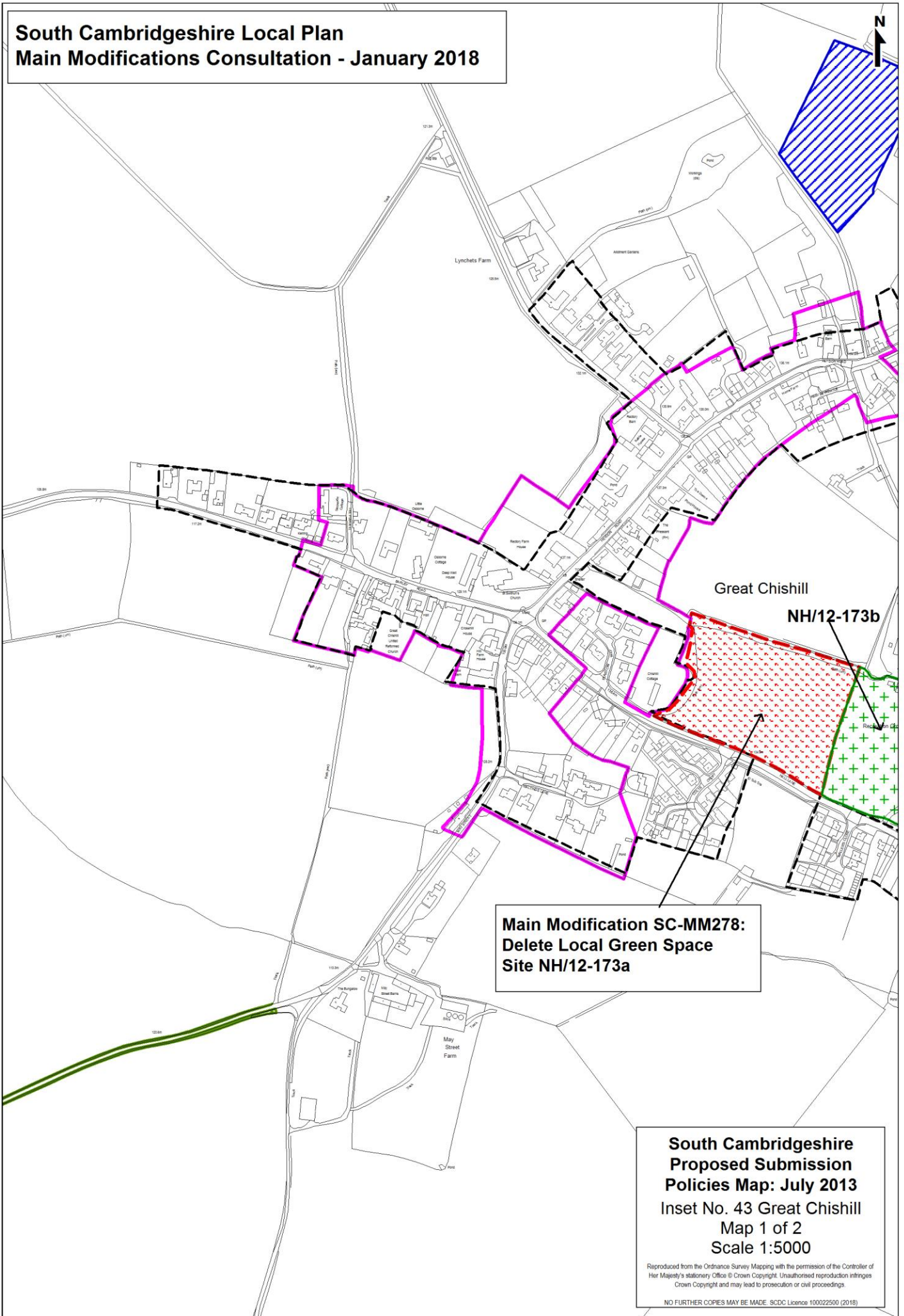
Main Modification SC-MM277c:
Amend the Development Framework boundary in Great Abington to incorporate proposed new housing allocation Policy H/1(j) Land at High Street/Pampisford Road (NOTE: the new housing allocation is the subject of Proposed Modifications that were previously consulted upon in the Proposed Modifications Joint Consultation Report (December 2015) (Reference Document: RD/MC/010) as Modification PM/SC/7/A.)

South Cambridgeshire Proposed Submission Policies Map: July 2013
Inset No. 41 Great & Little Abington
Map 2 of 2
Scale 1:5000

Reproduced from the Ordnance Survey Mapping with the permission of the Controller of Her Majesty's Stationery Office © Crown Copyright. Unauthorised reproduction infringes Crown Copyright and may lead to prosecution or civil proceedings.

NO FURTHER COPIES MAY BE MADE. SCDC Licence 100022500 (2018)

**South Cambridgeshire Local Plan
Main Modifications Consultation - January 2018**



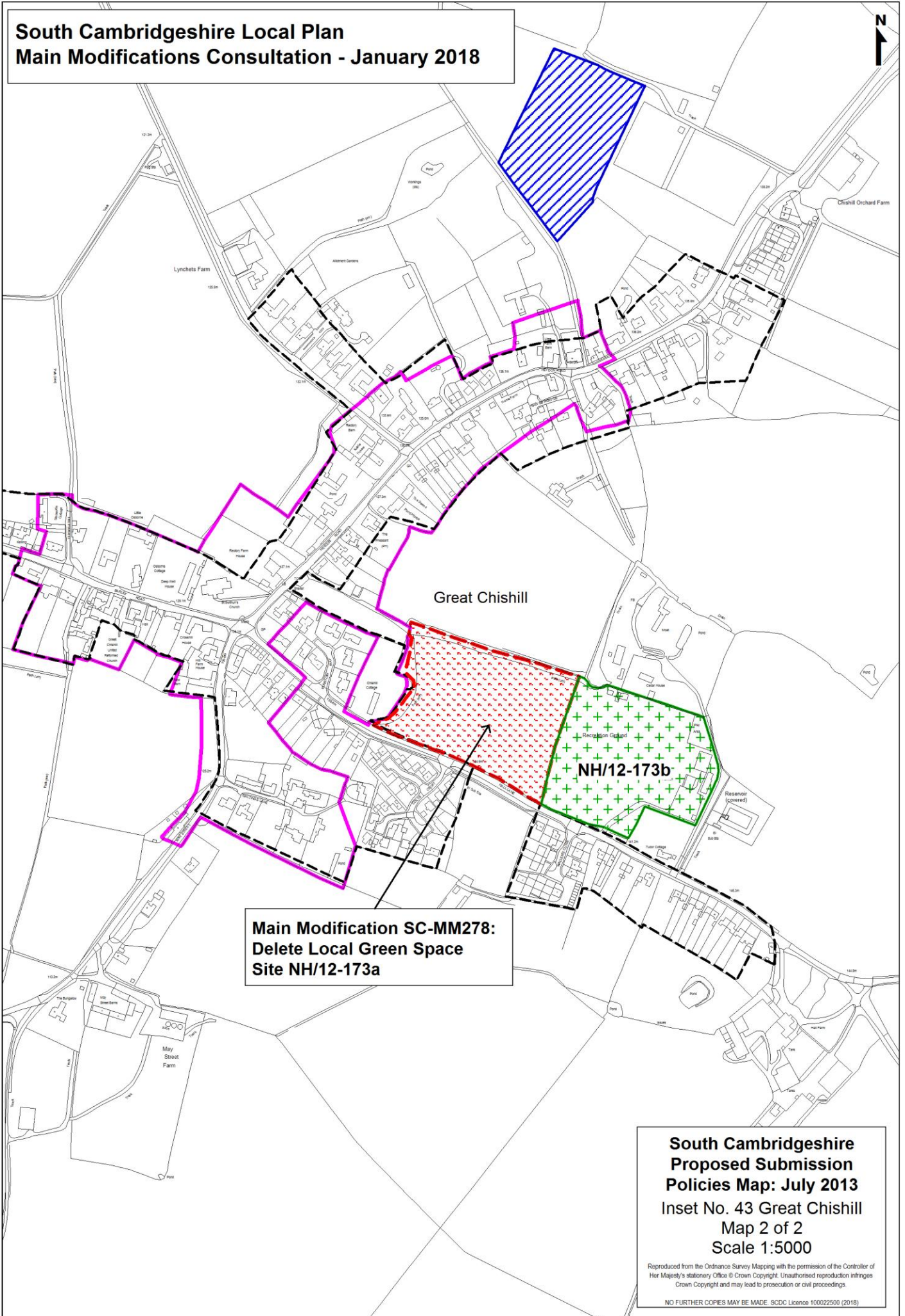
**Main Modification SC-MM278:
Delete Local Green Space
Site NH/12-173a**

**South Cambridgeshire
Proposed Submission
Policies Map: July 2013**
Inset No. 43 Great Chishill
Map 1 of 2
Scale 1:5000

Reproduced from the Ordnance Survey Mapping with the permission of the Controller of Her Majesty's Stationery Office © Crown Copyright. Unauthorised reproduction infringes Crown Copyright and may lead to prosecution or civil proceedings.

NO FURTHER COPIES MAY BE MADE. SCDC Licence 100022500 (2018)

**South Cambridgeshire Local Plan
Main Modifications Consultation - January 2018**



**Main Modification SC-MM278:
Delete Local Green Space
Site NH/12-173a**

**South Cambridgeshire
Proposed Submission
Policies Map: July 2013
Inset No. 43 Great Chishill
Map 2 of 2
Scale 1:5000**

Reproduced from the Ordnance Survey Mapping with the permission of the Controller of Her Majesty's Stationery Office © Crown Copyright. Unauthorised reproduction infringes Crown Copyright and may lead to prosecution or civil proceedings.

NO FURTHER COPIES MAY BE MADE. SDCDC Licence 100022500 (2018)

**South Cambridgeshire Local Plan
Main Modifications Consultation - January 2018**



**SP/7
(NOTE: no policy area
in Draft Local Plan)**

**Main Modification SC-MM279:
Delete Open Space Allocation
Policy SC/1 (1e)**

**South Cambridgeshire
Proposed Submission
Policies Map: July 2013**
Inset No. 45 Great Shelford
& Stapleford
Map 4 of 6
Scale 1:5000

Reproduced from the Ordnance Survey Mapping with the permission of the Controller of Her Majesty's Stationery Office © Crown Copyright. Unauthorised reproduction infringes Crown Copyright and may lead to prosecution or civil proceedings.

NO FURTHER COPIES MAY BE MADE. SDCDC Licence 100022500 (2018)

**South Cambridgeshire Local Plan
Main Modifications Consultation - January 2018**



**Main Modification SC-MM280b:
Delete Local Green Space
Site NH/12-080 and replace with
Protected Village Amenity Area**

**Main Modification SC-MM280a:
Delete Local Green Space
Site NH/12-079 and replace with
Protected Village Amenity Area
(Note: PVAA on Adopted
Proposals Map 2012)**

NH/12-078

**Main Modification SC-MM280c:
Delete Local Green Space
Site NH/12-082 and replace with
Protected Village Amenity Area**

**Main Modification SC-MM280d:
Delete Local Green Space
Site NH/12-083 and replace with
Protected Village Amenity Area**

**Main Modification SC-MM280e:
Delete Local Green Space
Site NH/12-081**

**South Cambridgeshire
Proposed Submission
Policies Map: July 2013
Inset No. 47 Guilden Morden
Map 1 of 2
Scale 1:5000**

Reproduced from the Ordnance Survey Mapping with the permission of the Controller of Her Majesty's Stationery Office © Crown Copyright. Unauthorised reproduction infringes Crown Copyright and may lead to prosecution or civil proceedings.
NO FURTHER COPIES MAY BE MADE. SDCD Licence 100022500 (2018)