

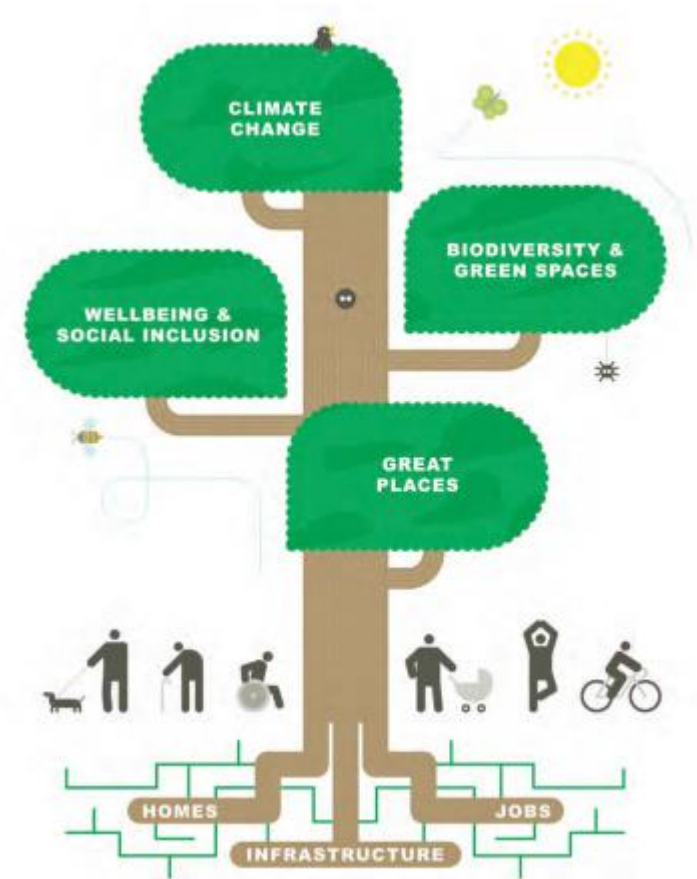
Greater Cambridge Local Plan

Cambridge East Community Forum

19 October 2022

What have we done so far?

- First Proposals (Preferred Options) consultation held Nov-Dec 2021.
- Representations received to the First Proposals were published June 2022.
- Updated Greater Cambridge Local Development Scheme published August 2022 – included revised timetables for Greater Cambridge Local Plan and North East Cambridge Area Action Plan.



Cambridge East

First Proposals 2021

A major new eastern quarter to Cambridge, as a key part of the development strategy for Greater Cambridge.

For approximately 7,000 homes and 9,000 jobs on 'safeguarded land' identified in the adopted 2018 Local Plans.

Ensure a comprehensive approach with Marleigh and LNCH.

New centre for retail, cultural and other uses.

Mix of employment uses to provide a variety of opportunities, including local jobs for the existing community.

All necessary supporting community infrastructure to be provided, including primary and secondary schools.

Delivery of the full site will require the GCP Cambridge Eastern Access Scheme Phase B to high quality public transport connections, and a Trip Budget to limit vehicle trips on the network.

Retain green corridor in the Green Belt, linking the countryside to Coldham's Common, whilst maintaining separate identify of Teversham village.

What are the next steps?



- Series of Joint Local Planning Advisory Group meetings Oct 2022 – Mar 2023 to discuss key feedback from public consultation and seek Member views on next steps for each theme.
- Formal Committee Meetings in Jan 2023 to consider responses received to the GLCP Strategy and Sites and confirm the Preferred Strategy and Sites – will confirm what role CE is proposed to have in meeting development needs to 2041 and beyond.
- Full draft Local Plan (Reg 18) to be considered by Members in summer 2023 and then be subject to public consultation in Autumn 2023.

What is the rest of the plan making process?



- Consider responses to Draft GCLP consultation and need for any changes to the plan.
- Proposed Submission (Reg 19) GCLP and NECAAP stages will await the outcome of the CWWTP DCO process – they are predicated on the Cambridge WWTP relocating and if the DCO is approved it will provide evidence that redevelopment of NEC in both plans can be delivered.
- LDS assumes consultation on Proposed Submission plans (Reg 19) in Autumn 2024, to follow the outcome of Cambridge WWTP DCO. This will be kept under review in light of progress of DCO.
- LDS assumes Submission to Secretary of State for independent Examination (Reg 22) in Summer/ Autumn 2025, again subject to the outcome and timing of Cambridge WWTP DCO.